

LEA Name : Pottstown SD  
Address : 230 Beech St  
Pottstown, PA 19464

County : Montgomery  
AUN Number : 123466403  
LEA Type : SD

## Annual Financial Report Accuracy Certification Statement

For Fiscal Year Ending  
**6/30/2024**

Pennsylvania Department of Education

&

Office of Comptroller Operations

PDE-2056: Intermediate Unit  
PDE-2057: School District, AVTS/CTC, Charter School,  
and Special Program Jointure

**CERTIFICATION:** By signing this page I agree that the electronic data submitted is a complete and accurate statement of the financial operations and status of the local education agency for the fiscal year. It has been prepared in accordance with generally accepted accounting principles and established Commonwealth of PA reporting guidelines.

\_\_\_\_\_  
Chief School Administrator Signature

\_\_\_\_\_  
Date

\_\_\_\_\_  
Board Secretary Signature

\_\_\_\_\_  
Date

Maureen K Oakley

(610)970-6611 Ext :

\_\_\_\_\_  
Contact Person

\_\_\_\_\_  
Contact Person Telephone Number

mjampo@pottstownk12.org

\_\_\_\_\_  
Contact Person E-mail Address

\_\_\_\_\_  
Contact Person Fax Number

# Audit Certification

## Annual Financial Report:

For Fiscal Year Ending 6/30/2024

(Pursuant to PA School Code Section 218(b))

LEA Name : Pottstown SD

AUN Number : 123466403

County : Montgomery

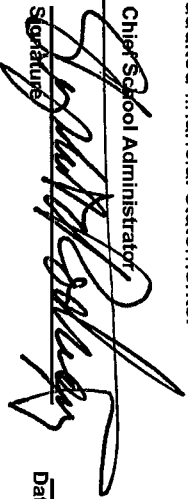
Audit Certification Due:

12/31/2024

This certification is applicable to the Annual Financial Report data submitted through the Consolidated Financial Reporting System (CFRS).

CERTIFICATION: By signing this page I agree that the financial statements of the school have been properly audited as noted above pursuant to Article XXIV, and in the auditor's professional opinion, the Annual Financial Report (PDE-2057) submitted through CFRS is materially consistent with the audited financial statements.

Chief School Administrator

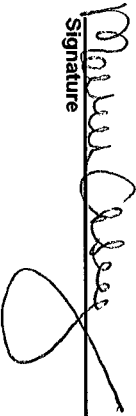


Signature

Date

3/5/25

Board Secretary



Signature

Date

3/5/25

Maureen K Oakley

Contact Person

(610)970-6611

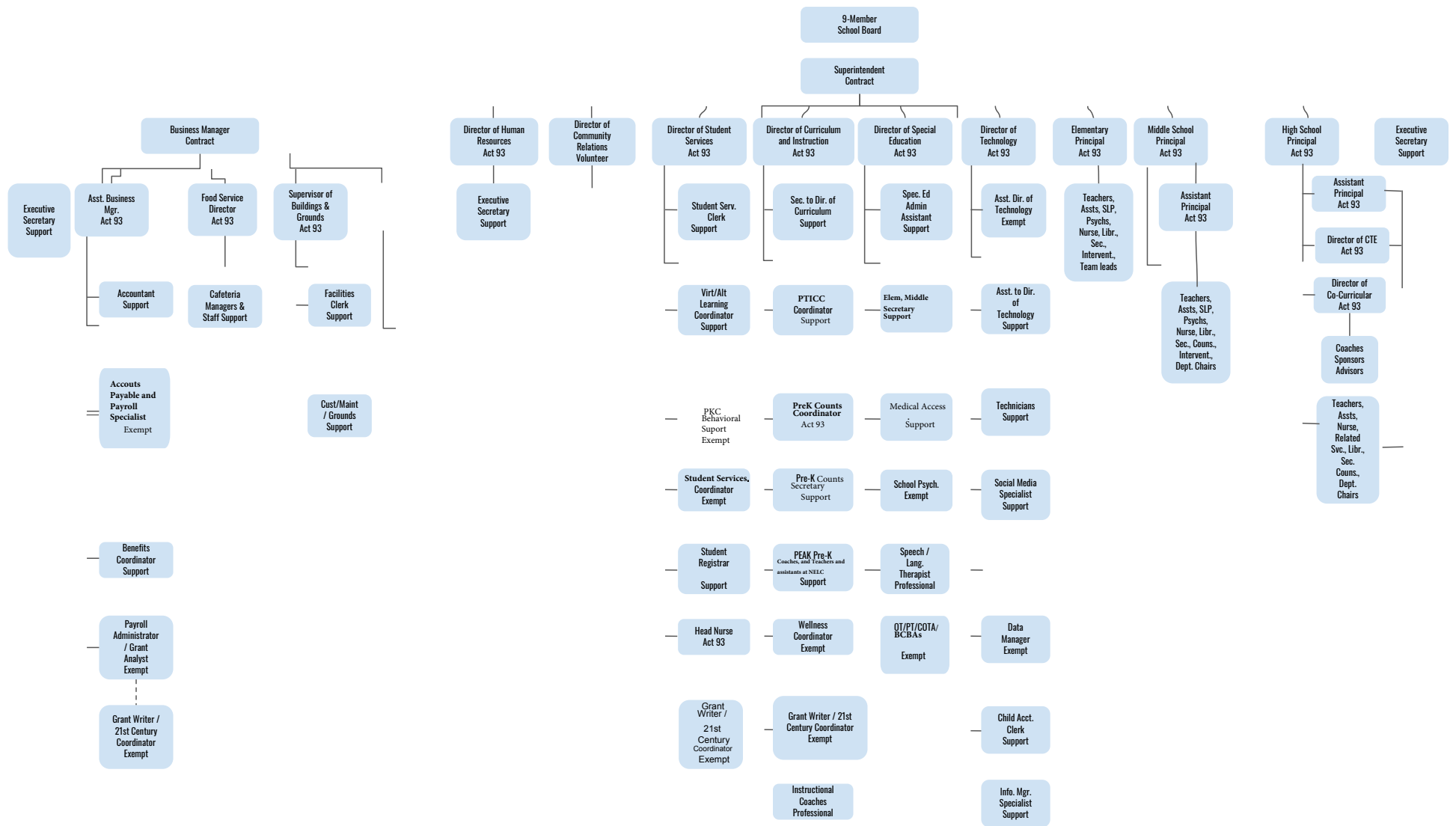
Ext :

Contact Person Telephone Number

mjampo@pottstownk12.org

Contact Person E-mail Address

Contact Person Fax Number



Pottstown School District - March 15, 2018  
**Revision: July 2020; Board approved 12-17-20**



Book	Policy Manual
Section	600 Finances
Title	Capital Assets GASB Statement 34
Code	622
Status	Active
Adopted	March 15, 2018
Last Revised	February 18, 2021

### **Purpose**

The Board recognizes the need to implement the required accounting and financial reporting standards stipulated by the Pennsylvania Department of Education.

The primary objectives of implementing the Governmental Accounting Standards Board (GASB) Statement 34 are to assure compliance with state requirements, and properly account for both the financial and economic resources of the district.

### **Definition**

This policy applies to the district's acquisition and depreciation of capital assets. **Capital assets** include land, improvements to land, easements, buildings and building additions, building improvements, furniture, fixtures and equipment, equipment under lease, vehicles, works of art and historical treasures, construction-in-progress, and infrastructure. **Capital assets** are tangible assets used in operations and have initial useful lives extending beyond a single reporting period. Equipment will not change its original shape, appearance or character with use and it can be expected to last more than one (1) year with reasonable care and maintenance.

### **Authority**

Participation of the school district in any such activity shall be in accordance with Board policy.[\[1\]](#)  
[\[2\]](#)

### **Delegation of Responsibility**

The responsibility to coordinate the compilation and preparation of all information necessary to implement this policy is delegated to the Superintendent, Business Administrator or their designee.

They should be responsible for implementing the necessary procedures to establish and maintain a capital asset inventory, including depreciation schedules. The basis for depreciation, including groups of assets and useful lives, shall be in writing and submitted for review to the Board

The Superintendent or designee shall prepare the required Management Discussion and Analysis (MD&A). MD&A shall be in the form required by GASB Statement 34.

The district's independent auditors shall review the MD&A, in accordance with SAS No. 52, "Required Supplementary Information".

## **Guidelines**

### **Capital Asset Addition Overview**

Purchased capital assets greater than \$5,000 should be recorded at historical/original cost. The cost of a capital asset should include capitalized interest and ancillary charges necessary to place the asset into its intended location and condition for use. Ancillary charges include costs that are directly attributable to asset acquisition.

Capital assets should be depreciated over their useful lives as determined for each asset class. Land, and some land improvements, are considered inexhaustible, and are therefore not subject to depreciation.

### **Disposals**

**Sale of Capital Assets** - When capital assets are sold, calculation of gain or loss on disposal is required. The calculation is based upon the amount of proceeds received less the net book value (cost less accumulated depreciation taken on the asset).

Legal

[1. 24 P.S. 218](#)

[2. 24 P.S. 613](#)

Governmental Accounting Standards Board, Statement No. 34

<u>Val Number</u>	<u>Description</u>	<u>Justification</u>
42420	<p>Expenditure Detail: Total current year 2700-513 expenditure varies from prior year by 10%. Correct the data or enter a justification.</p> <p>2700-513, AFR Exp Detail: \$2,698,310.62 2700-513, PY AFR Amount: \$2,386,251.96</p>	<p>Expenses for transportation for special education were up due to the increase in number of students and number of outplaced students and a general increase on overall costs.</p>

LEA : 123466403     Pottstown SD

Printed 3/6/2025 12:48:10 PM

Amounts Expressed in Whole Dollars		<u>General Fund</u> <u>(10)</u>	<u>Student Sponsored</u> <u>Activity Fund</u> <u>(21)</u>	<u>Public Purpose Trust</u> <u>(27)</u>	<u>Other Compt Approved</u> <u>(28)</u>	<u>Athletic / Activity</u> <u>(29)</u>
<b>Assets And Deferred Outflows Of Resources</b>						
<b>Assets</b>						
0100	Cash and Cash Equivalents	20,110,817				119,270
0110	Investments	6,055,738				
0120	Taxes Receivable	2,160,381				
0130	Due From Other Funds	38,066				
0141	Due From Other Governments	120				
0142	State Revenue Receivable	6,506,242				
0143	Federal Revenue Receivable	3,545,239				
0145	Other Intergovernmental Revenue Receivable					
0146	Due from Primary Government					
0147	Due from Component Unit					
0150	Other Receivables	252,297				
0170	Inventories					
0180	Prepaid Expenses (Expenditures)	249,402				
0190	Other Current Assets					
<b>Total Assets</b>		<b>\$38,918,302</b>				<b>\$119,270</b>
0910	Deferred Outflows of Resources					
<b>Total Assets And Deferred Outflows Of Resources</b>		<b>\$38,918,302</b>				<b>\$119,270</b>

LEA : 123466403     Pottstown SD

Printed 3/6/2025 12:48:10 PM

Amounts Expressed in Whole Dollars		<u>Capital Reserve (690.</u> <u>1850)</u> <u>(31)</u>	<u>Capital Reserve (1431)</u> <u>(32)</u>	<u>Other Capital Projects</u> <u>Fund</u> <u>(39)</u>	<u>Debt Service</u> <u>(40)</u>	<u>Permanent</u> <u>(90)</u>
<b>Assets And Deferred Outflows Of Resources</b>						
<b>Assets</b>						
0100	Cash and Cash Equivalents			2,427,149		
0110	Investments					
0120	Taxes Receivable					
0130	Due From Other Funds					
0141	Due From Other Governments					
0142	State Revenue Receivable					
0143	Federal Revenue Receivable					
0145	Other Intergovernmental Revenue Receivable					
0146	Due from Primary Government					
0147	Due from Component Unit					
0150	Other Receivables					
0170	Inventories					
0180	Prepaid Expenses (Expenditures)					
0190	Other Current Assets					
<b>Total Assets</b>				<b>\$2,427,149</b>		
0910	Deferred Outflows of Resources					
<b>Total Assets And Deferred Outflows Of Resources</b>				<b>\$2,427,149</b>		



LEA : 123466403     Pottstown SD

Printed 3/6/2025 12:48:10 PM

Amounts Expressed in Whole Dollars		<u>Total Governmental</u>
		<u>Funds</u>
<b>Assets And Deferred Outflows Of Resources</b>		
<b>Assets</b>		
0100	Cash and Cash Equivalents	22,657,236
0110	Investments	6,055,738
0120	Taxes Receivable	2,160,381
0130	Due From Other Funds	38,066
0141	Due From Other Governments	120
0142	State Revenue Receivable	6,506,242
0143	Federal Revenue Receivable	3,545,239
0145	Other Intergovernmental Revenue Receivable	
0146	Due from Primary Government	
0147	Due from Component Unit	
0150	Other Receivables	252,297
0170	Inventories	
0180	Prepaid Expenses (Expenditures)	249,402
0190	Other Current Assets	
<b>Total Assets</b>		<b>\$41,464,721</b>
0910	Deferred Outflows of Resources	
<b>Total Assets And Deferred Outflows Of Resources</b>		<b>\$41,464,721</b>

LEA : 123466403     Pottstown SD

Printed 3/6/2025 12:48:10 PM

Amounts Expressed in Whole Dollars		<u>General Fund</u> <u>(10)</u>	<u>Student Sponsored</u> <u>Activity Fund</u> <u>(21)</u>	<u>Public Purpose Trust</u> <u>(27)</u>	<u>Other Compt Approved</u> <u>(28)</u>	<u>Athletic / Activity</u> <u>(29)</u>
<b>Liabilities And Deferred Inflows Of Resources And Fund Balances</b>						
<b>Liabilities</b>						
0400	Due to Other Funds	1,736,242				
0411	Due to Other Governments					
0412	Due to Primary Government					
0413	Due to Component Unit					
0420	Accounts Payable	2,131,265				985
0430	Contracts Payable	238,911				
0440	Current Portion of Long-Term Debt					
0450	Short-Term Payables					
0461	Accrued Salaries and Benefits	5,010,399				
0462	Payroll Deductions and Withholding	300,155				
0480	Unearned Revenues	158,613				
0490	Other Current Liabilities	2,654,833				
<b>Total Liabilities</b>		<b>\$12,230,418</b>				<b>\$985</b>
0950	Deferred Inflows of Resources	1,855,323				
<b>Fund Balances</b>						
0810	Nonspendable Fund Balance	282,424				
0820	Restricted Fund Balance					122,371
0830	Committed Fund Balance	18,364,717				
0840	Assigned Fund Balance	679,635				
0850	Unassigned Fund Balance	5,505,785				(4,086)
<b>Total Fund Balances</b>		<b>\$24,832,561</b>				<b>\$118,285</b>
<b>Total Liabilities, Deferred Inflows Of Resources And Fund Balances</b>		<b>\$38,918,302</b>				<b>\$119,270</b>

LEA : 123466403     Pottstown SD

Printed 3/6/2025 12:48:10 PM

Amounts Expressed in Whole Dollars		<u>Capital Reserve (690.</u> <u>1850)</u> <u>(31)</u>	<u>Capital Reserve (1431)</u> <u>(32)</u>	<u>Other Capital Projects</u> <u>Fund</u> <u>(39)</u>	<u>Debt Service</u> <u>(40)</u>	<u>Permanent</u> <u>(90)</u>
<b>Liabilities And Deferred Inflows Of Resources And Fund Balances</b>						
<b>Liabilities</b>						
0400	Due to Other Funds			30,435		
0411	Due to Other Governments					
0412	Due to Primary Government					
0413	Due to Component Unit					
0420	Accounts Payable					
0430	Contracts Payable					
0440	Current Portion of Long-Term Debt					
0450	Short-Term Payables					
0461	Accrued Salaries and Benefits					
0462	Payroll Deductions and Withholding					
0480	Unearned Revenues					
0490	Other Current Liabilities					
<b>Total Liabilities</b>				<b>\$30,435</b>		
0950	Deferred Inflows of Resources					
<b>Fund Balances</b>						
0810	Nonspendable Fund Balance					
0820	Restricted Fund Balance			2,396,714		
0830	Committed Fund Balance					
0840	Assigned Fund Balance					
0850	Unassigned Fund Balance					
<b>Total Fund Balances</b>				<b>\$2,396,714</b>		
<b>Total Liabilities, Deferred Inflows Of Resources And Fund Balances</b>				<b>\$2,427,149</b>		

LEA : 123466403     Pottstown SD

Printed 3/6/2025 12:48:10 PM

Amounts Expressed in Whole Dollars		<u>Total Governmental</u> <u>Funds</u>
<b>Liabilities And Deferred Inflows Of Resources And Fund Balances</b>		
<b>Liabilities</b>		
0400 Due to Other Funds		1,766,677
0411 Due to Other Governments		
0412 Due to Primary Government		
0413 Due to Component Unit		
0420 Accounts Payable		2,132,250
0430 Contracts Payable		238,911
0440 Current Portion of Long-Term Debt		
0450 Short-Term Payables		
0461 Accrued Salaries and Benefits		5,010,399
0462 Payroll Deductions and Withholding		300,155
0480 Unearned Revenues		158,613
0490 Other Current Liabilities		2,654,833
<b>Total Liabilities</b>		<b>\$12,261,838</b>
0950 Deferred Inflows of Resources		1,855,323
<b>Fund Balances</b>		
0810 Nonspendable Fund Balance		282,424
0820 Restricted Fund Balance		2,519,085
0830 Committed Fund Balance		18,364,717
0840 Assigned Fund Balance		679,635
0850 Unassigned Fund Balance		5,501,699
<b>Total Fund Balances</b>		<b>\$27,347,560</b>
<b>Total Liabilities, Deferred Inflows Of Resources And Fund Balances</b>		<b>\$41,464,721</b>

LEA : 123466403     Pottstown SD

Printed 3/6/2025 12:48:21 PM

Amounts Expressed in Whole Dollars	<u>General Fund</u> <u>(10)</u>	<u>Student Sponsored</u> <u>Activity Fund</u> <u>(21)</u>	<u>Public Purpose Trust</u> <u>(27)</u>	<u>Other Compt Approved</u> <u>(28)</u>	<u>Athletic / Activity</u> <u>(29)</u>
<b>Revenues</b>					
6000 Revenue from Local Sources	36,940,985				47,099
7000 Revenue from State Sources	42,541,763				
8000 Revenue from Federal Sources	8,191,079				
<b>Total Revenues</b>	<b>\$87,673,827</b>				<b>\$47,099</b>
<b>Expenditures</b>					
1000 Instruction	54,082,135				
2000 Support Services	28,522,719				
3000 Operation of Non-Instructional Services	1,629,480				51,185
4000 Facilities Acquisition, Construction and Improvement Services	846,148				
5110 Debt Service	3,673,139				
5130 Refund of Prior Year Revenues / Receipts	7,250				
5140 Leases and Other Right-to-Use Arrangements	50,035				
<b>Total Expenditures</b>	<b>\$88,810,906</b>				<b>\$51,185</b>
<b>Excess (Deficiency) Of Revenues Over Expenditures</b>	<b>(\$1,137,079)</b>				<b>(\$4,086)</b>
<b>Other Financing Sources (Uses)</b>					
9110 Face Value of Bonds Issued					
9120 Proceeds from Refunding of Bonds					
9130 Bond Premiums					
9200 Proceeds from Extended Term Financing, Leases, and Other Right-to-Use Arrangements	248,611				
9300 Interfund Transfers - IN					
9400 Sale of or Compensation for Loss of Fixed Assets					
9710 Transfers from Component Units					
9720 Transfers from Primary Governments					
9910 Other Financing Sources Not Listed in the 9000 Series					
9990 Insurance Recoveries					
5120 Debt Service – Refunded Bonds					
5150 Bond Discounts					
5200 Interfund Transfers – Out					
5300 Transfers Out to Component Units/Primary Governments					
<b>Total Other Financing Sources (Uses)</b>	<b>\$248,611</b>				

Amounts Expressed in Whole Dollars		<u>Capital Reserve (690.</u> <u>1850)</u> <u>(31)</u>	<u>Capital Reserve (1431)</u> <u>(32)</u>	<u>Other Capital Projects</u> <u>Fund</u> <u>(39)</u>	<u>Debt Service</u> <u>(40)</u>	<u>Permanent</u> <u>(90)</u>
<b>Revenues</b>						
6000	Revenue from Local Sources			122,418		
7000	Revenue from State Sources					
8000	Revenue from Federal Sources					
<b>Total Revenues</b>				<b>\$122,418</b>		
<b>Expenditures</b>						
1000	Instruction					
2000	Support Services					
3000	Operation of Non-Instructional Services					
4000	Facilities Acquisition, Construction and Improvement Services					
5110	Debt Service					
5130	Refund of Prior Year Revenues / Receipts					
5140	Leases and Other Right-to-Use Arrangements					
<b>Total Expenditures</b>						
<b>Excess (Deficiency) Of Revenues Over Expenditures</b>				<b>\$122,418</b>		
<b>Other Financing Sources (Uses)</b>						
9110	Face Value of Bonds Issued					
9120	Proceeds from Refunding of Bonds					
9130	Bond Premiums					
9200	Proceeds from Extended Term Financing, Leases, and Other Right-to-Use Arrangements					
9300	Interfund Transfers - IN					
9400	Sale of or Compensation for Loss of Fixed Assets					
9710	Transfers from Component Units					
9720	Transfers from Primary Governments					
9910	Other Financing Sources Not Listed in the 9000 Series					
9990	Insurance Recoveries					
5120	Debt Service – Refunded Bonds					
5150	Bond Discounts					
5200	Interfund Transfers – Out					
5300	Transfers Out to Component Units/Primary Governments					
<b>Total Other Financing Sources (Uses)</b>						

Amounts Expressed in Whole Dollars		<u>Total Governmental Funds</u>
<b>Revenues</b>		
6000	Revenue from Local Sources	37,110,502
7000	Revenue from State Sources	42,541,763
8000	Revenue from Federal Sources	8,191,079
<b>Total Revenues</b>		<b>\$87,843,344</b>
<b>Expenditures</b>		
1000	Instruction	54,082,135
2000	Support Services	28,522,719
3000	Operation of Non-Instructional Services	1,680,665
4000	Facilities Acquisition, Construction and Improvement Services	846,148
5110	Debt Service	3,673,139
5130	Refund of Prior Year Revenues / Receipts	7,250
5140	Leases and Other Right-to-Use Arrangements	50,035
<b>Total Expenditures</b>		<b>\$88,862,091</b>
<b>Excess (Deficiency) Of Revenues Over Expenditures</b>		<b>(\$1,018,747)</b>
<b>Other Financing Sources (Uses)</b>		
9110	Face Value of Bonds Issued	
9120	Proceeds from Refunding of Bonds	
9130	Bond Premiums	
9200	Proceeds from Extended Term Financing, Leases, and Other Right-to-Use Arrangements	248,611
9300	Interfund Transfers - IN	
9400	Sale of or Compensation for Loss of Fixed Assets	
9710	Transfers from Component Units	
9720	Transfers from Primary Governments	
9910	Other Financing Sources Not Listed in the 9000 Series	
9990	Insurance Recoveries	
5120	Debt Service – Refunded Bonds	
5150	Bond Discounts	
5200	Interfund Transfers – Out	
5300	Transfers Out to Component Units/Primary Governments	
<b>Total Other Financing Sources (Uses)</b>		<b>\$248,611</b>

Amounts Expressed in Whole Dollars		<u>General Fund</u> <u>(10)</u>	<u>Student Sponsored</u> <u>Activity Fund</u> <u>(21)</u>	<u>Public Purpose Trust</u> <u>(27)</u>	<u>Other Compt Approved</u> <u>(28)</u>	<u>Athletic / Activity</u> <u>(29)</u>
<b>Special And Extraordinary Items</b>						
9920 Special Items – Gains						
9930 Extraordinary Items – Gains						
5520 Special Items – Losses						
5530 Extraordinary Items – Losses						
<b>Net Change In Fund Balances</b>		<b>(\$888,468)</b>				<b>(\$4,086)</b>
<b>Fund Balance</b>						
0001 Fund Balance - Beginning of Fiscal Year		25,721,029				122,371
<b>Fund Balance - End Of Year</b>		<b>\$24,832,561</b>				<b>\$118,285</b>



Amounts Expressed in Whole Dollars		<u>Capital Reserve (690.</u> <u>1850)</u> <u>(31)</u>	<u>Capital Reserve (1431)</u> <u>(32)</u>	<u>Other Capital Projects</u> <u>Fund</u> <u>(39)</u>	<u>Debt Service</u> <u>(40)</u>	<u>Permanent</u> <u>(90)</u>
<b>Special And Extraordinary Items</b>						
9920	Special Items – Gains					
9930	Extraordinary Items – Gains					
5520	Special Items – Losses					
5530	Extraordinary Items – Losses					
<b>Net Change In Fund Balances</b>				<b>\$122,418</b>		
<b>Fund Balance</b>						
0001	Fund Balance - Beginning of Fiscal Year			2,274,297		
<b>Fund Balance - End Of Year</b>				<b>\$2,396,715</b>		

Amounts Expressed in Whole Dollars		<u>Total Governmental</u> <u>Funds</u>
<b>Special And Extraordinary Items</b>		
9920	Special Items – Gains	
9930	Extraordinary Items – Gains	
5520	Special Items – Losses	
5530	Extraordinary Items – Losses	
<b>Net Change In Fund Balances</b>		<b>(\$770,136)</b>
<b>Fund Balance</b>		
0001	Fund Balance - Beginning of Fiscal Year	28,117,697
<b>Fund Balance - End Of Year</b>		<b>\$27,347,561</b>

LEA : 123466403     Pottstown SD

Printed 3/6/2025 12:48:22 PM

Amounts Expressed in Whole Dollars		<u>Food Service</u> <u>(51)</u>	<u>Child Care</u> <u>Operations</u> <u>(52)</u>	<u>Other Enterprise</u> <u>(58)</u>	<u>TOTAL</u>	<u>Internal Service</u> <u>(60)</u>
<b>Assets And Deferred Outflows Of Resources</b>						
<b>Current Assets</b>						
0100	Cash and Cash Equivalents	1,541,956			1,541,956	4,345,828
0110	Investments					
0130	Due From Other Funds	48,192			48,192	1,612,953
0141	Due From Other Governments					
0142	State Revenue Receivable	205			205	
0143	Federal Revenue Receivable	6,055			6,055	
0146	Due from Primary Government					
0147	Due from Component Unit					
0150	Other Receivables					
0170	Inventories	42,446			42,446	
0180	Prepaid Expenses (Expenditures)					158,000
0190	Other Current Assets					
<b>Total Current Assets</b>		<b>\$1,638,854</b>			<b>\$1,638,854</b>	<b>\$6,116,781</b>
<b>Noncurrent Assets</b>						
0211	Land					
0212	Site Improvements (Net)					
0220	Buildings and Building Improvements (Net)					
0230	Tangible Property and Intangible Right-To-Use Assets (Net)	320,532			320,532	
0250	Construction in Progress					
0260	Long Term Prepayments					
0290	Other Noncurrent Assets					
<b>Total Noncurrent Assets</b>		<b>\$320,532</b>			<b>\$320,532</b>	
0910	Deferred Outflows of Resources	1,215,924			1,215,924	
<b>Total Assets And Deferred Outflows Of Resources</b>		<b>\$3,175,310</b>			<b>\$3,175,310</b>	<b>\$6,116,781</b>

LEA : 123466403     Pottstown SD

Printed 3/6/2025 12:48:22 PM

Amounts Expressed in Whole Dollars	<u>Food Service</u> <u>(51)</u>	<u>Child Care</u> <u>Operations</u> <u>(52)</u>	<u>Other Enterprise</u> <u>(58)</u>	<u>TOTAL</u>	<u>Internal Service</u> <u>(60)</u>
<b>Liabilities And Deferred Inflows Of Resources And Net Position</b>					
<b>Current Liabilities</b>					
0400 Due to Other Funds	(67,465)			(67,465)	
0411 Due to Other Governments					
0413 Due to Component Unit					
0420 Accounts Payable	4,297			4,297	554,112
0430 Contracts Payable					
0440 Current Portion of Long-Term Debt					
0450 Short-Term Payables					
0461 Accrued Salaries and Benefits	32,536			32,536	
0462 Payroll Deductions and Withholding					
0480 Unearned Revenues	1,136			1,136	
0490 Other Current Liabilities	1,489			1,489	
<b>Total Current Liabilities</b>	<b>(\$28,007)</b>			<b>(\$28,007)</b>	<b>\$554,112</b>
<b>Noncurrent Liabilities</b>					
0510 Bonds Payable					
0520 Extended-Term Financing Agreements Payable					
0530 Lease and Other Right-To-Use Obligations					
0540 Accumulated Compensated Absences	25,319			25,319	
0550 Authority Lease Obligations					
0560 Other Post-Employment Benefits (OPEB)	131,190			131,190	
0570 Net Pension Liability	1,689,435			1,689,435	
0599 Other Noncurrent Liabilities					
<b>Total Noncurrent Liabilities</b>	<b>\$1,845,944</b>			<b>\$1,845,944</b>	
<b>Total Liabilities</b>	<b>\$1,817,937</b>			<b>\$1,817,937</b>	<b>\$554,112</b>
0950 Deferred Inflows of Resources	737,923			737,923	
<b>Net Position</b>					
0791 Net Investment in Capital Assets	243,058			243,058	
0008 Restricted Net Position (0792 – 0798)					
0799 Unrestricted Net Position	376,392			376,392	5,562,669
<b>Total Net Position</b>	<b>\$619,450</b>			<b>\$619,450</b>	<b>\$5,562,669</b>
<b>Total Liabilities And Deferred Inflows Of Resources And Net Position</b>	<b>\$3,175,310</b>			<b>\$3,175,310</b>	<b>\$6,116,781</b>

Amounts Expressed in Whole Dollars		<u>Food Service</u> <u>(51)</u>	<u>Child Care Operations</u> <u>(52)</u>	<u>Other Enterprise</u> <u>(58)</u>	<u>TOTAL</u>	<u>Internal Service</u> <u>(60)</u>
<b>Operating Revenues</b>						
6600	Food Service Revenue	87,219			87,219	
0071	Charges for Services					7,415,339
0072	Other Operating Revenue					
<b>Total Operating Revenues</b>		<b>\$87,219</b>			<b>\$87,219</b>	<b>\$7,415,339</b>
<b>Operating Expenses</b>						
100	Personnel Services – Salaries	705,678			705,678	
200	Personnel Services – Employee Benefits	421,877			421,877	6,612,918
300	Purchased Professional and Technical Services	1,494			1,494	
400	Purchased Property Services	7,133			7,133	
500	Other Purchased Services	4,541			4,541	
600	Supplies	1,498,380			1,498,380	
740	Depreciation	43,966			43,966	
770	Amortization Expense					
810	Dues and Fees	1,076			1,076	302,877
880	Refunds of Prior Years' Receipts					
890	Miscellaneous Expenditures					
<b>Total Operating Expenses</b>		<b>\$2,684,145</b>			<b>\$2,684,145</b>	<b>\$6,915,795</b>
<b>Operating Income (Loss)</b>		<b>(\$2,596,926)</b>			<b>(\$2,596,926)</b>	<b>\$499,544</b>
<b>Non Operating Revenues (Expenses)</b>						
6500	Earnings on Investments	73,915			73,915	201,877
6830	Federal Revenue from Intermediary Sources					
6920	Contributions and Donations from Private Sources					
6930	Gains or Losses on Sale of Fixed Assets					
6991	Refunds of a Prior Year Expenditure					
7000	Revenue from State Sources	221,277			221,277	
8000	Revenue from Federal Sources	2,672,598			2,672,598	
9990	Insurance Recoveries					
820	Claims and Judgments Against the LEA					
830	Interest					
<b>TOTAL Non Operating Revenues (Expenses)</b>		<b>\$2,967,790</b>			<b>\$2,967,790</b>	<b>\$201,877</b>
<b>Income (Loss) Before Contributions And Transfers</b>		<b>\$370,864</b>			<b>\$370,864</b>	<b>\$701,421</b>

Amounts Expressed in Whole Dollars	<u>Food Service</u> <u>(51)</u>	<u>Child Care Operations</u> <u>(52)</u>	<u>Other Enterprise</u> <u>(58)</u>	<u>TOTAL</u>	<u>Internal Service</u> <u>(60)</u>
<b>Contributions, Transfers, and Special and Extraordinary Items</b>					
5200 Interfund Transfers – Out					
5300 Transfers Out to Component Units/Primary Governments					
5520 Special Items – Losses					
5530 Extraordinary Items – Losses					
9300 Interfund Transfers - IN					
9500 Capital Contributions					
9700 Transfers IN From Component Units/Primary Governments					
9920 Special Items – Gains					
9930 Extraordinary Items – Gains					
<b>Change In Net Position</b>	<b>\$370,864</b>			<b>\$370,864</b>	<b>\$701,421</b>
0002 Net Position - Beginning of Fiscal Year	248,586			248,586	4,861,248
0003 Accounting Changes / Residual Equity Transfers					
<b>Net Position - End Of Year</b>	<b>\$619,450</b>			<b>\$619,450</b>	<b>\$5,562,669</b>

LEA : 123466403     Pottstown SD

Printed 3/6/2025 12:48:37 PM

Amounts Expressed in Whole Dollars		<u>Food Service</u> <u>(51)</u>	<u>Child Care Operations</u> <u>(52)</u>	<u>Other Enterprise</u> <u>(58)</u>	<u>TOTAL</u>	<u>Internal Service(60)</u>
<b>Cash Flows From Operating Activities</b>						
0011	Cash Receipts From Users	87,109			87,109	7,415,339
0012	Cash Receipts From Assessments Made to Other Funds					
0013	Cash Receipts From Earnings on Investments					
0014	Cash Receipts From Other Operating Revenue					
0015	Cash Payments To Employees For Services	1,236,556			1,236,556	
0016	Cash Payments For Insurance Claims					7,617,216
0017	Cash Payments To Suppliers For Goods and Services	1,447,213			1,447,213	
0018	Cash Payments For Other Operating Expenses					
<b>Net Cash Provided By (Used For) Operating Activities</b>		<b>(\$2,596,660)</b>			<b>(\$2,596,660)</b>	<b>(\$201,877)</b>
<b>Cash Flows From Non-Capital Financing Activities</b>						
0021	Receipts From Local Sources - 6000					
0022	Receipts From State Sources - 7000	221,683			221,683	
0023	Receipts From Federal Sources -8000	2,522,485			2,522,485	
0024	Notes and Loans Received (Repaid)					
0025	Interest Paid on Notes/Loans - 5100-830					
0026	Operating Transfers In (Out)/Residual Equity Trans					
0027	Operating Transfers In (Out) Primary Government / Comp Unit					
0028	Receipts From Refund of Prior Year Expenditures - 6991					
0029	Special and Extraordinary Gains (losses)					
0030	Receipts from Insurance Recoveries -9990					
<b>Net Cash Prov By (Used for) Non-Capital Financing Activities</b>		<b>\$2,744,168</b>			<b>\$2,744,168</b>	
<b>Cash Flows From Capital and Related Financing Activities</b>						
0031	Payments For Fac Acq, Const, and Imp - 4000	121,439			121,439	
0032	Proceeds from Disposal of Capital Assets					
0033	Proceeds From Extended Term Financing - 9200					
0034	Principal Paid on Financing Agreements					
0035	Interest Paid on Financing Agreements - 5100-830					
0036	(Inc) Dec in Contributed Capital					
<b>Net Cash Prov By (Used for) Capital and Related Financing Activities</b>		<b>\$121,439</b>			<b>\$121,439</b>	
<b>Cash Flows From Investing Activities</b>						
0041	Earnings on Investments - 6500	73,915			73,915	201,877
0042	Purchase of Inv Securities / Deposits to Inv Pools					
0043	Receipts From Investment Pool Withdrawals					
0044	Proceeds from Sale and Maturity of Inv Securities					

LEA : 123466403     Pottstown SD

Printed 3/6/2025 12:48:37 PM

Page - 2 of 4

0045   Loans Received (Paid)

Net Cash Prov By (Used for) Investing Activities	\$73,915	\$73,915	\$201,877
--	----------	----------	-----------



LEA : 123466403     Pottstown SD

Printed 3/6/2025 12:48:37 PM

	<u>Food Service</u> <u>(51)</u>	<u>Child Care Operations</u> <u>(52)</u>	<u>Other Enterprise</u> <u>(58)</u>	<u>TOTAL</u>	<u>Internal Service</u> <u>(60)</u>
<b>Net Increase (Decrease) in Cash Flows</b>	<b>342,862</b>			<b>342,862</b>	
0004 Cash and Cash Equivalents Beginning of Year					
<b>Cash and Cash Equivalents at Year End</b>	<b>\$342,862</b>			<b>\$342,862</b>	
<hr/>					
<b>Reconciliation of Operating Income (Loss) To Net Cash Provided by (Used For) Operating Activities</b>					
0005 Operating Income (Loss) per REP	(2,596,926)			(2,596,926)	499,544
<b>Adjustments</b>					
0051 Depreciation and Net Amortization	43,965			43,965	
0052 Provision for Uncollectible Accounts					
0053 Other Adjustments	162,119			162,119	
<b>Effect of Changes in Assets, Liabilities, Deferred Outflows and Deferred Inflows</b>					
0054 (Inc) Dec In Accounts Receivable (0120-0150)					
0055 Advances to Other Funds					
0056 (Inc) Dec in Inventories (0170)	(20,594)			(20,594)	
0057 (Inc) Dec in Prepaid Expenses (0180)					
0058 (Inc) Dec in Other Current or Noncurrent Assets	(32,066)			(32,066)	(1,255,533)
0064 Deferred Outflows (0910)	(706,481)			(706,481)	
0059 Inc (Dec) in Accounts Payable (0400-0450)	(76,113)			(76,113)	554,112
0060 Inc (Dec) in Accrued Salaries/Benefits (0461)	3,619			3,619	
0065 Inc (Dec) in Net Pension Liabilities (0570)	22,477			22,477	
0066 Inc (Dec) in Other Postemp Benefit Oblig (0560)	(7,232)			(7,232)	
0061 Inc (Dec) in Payroll Deductions/Withholding (0462)					
0062 Inc (Dec) in Unearned Revenue (0480)	(110)			(110)	
0063 Inc (Dec) in Other Current or Noncurrent Liabilities	3,404			3,404	
0067 Deferred Inflows (0950)	607,278			607,278	
<b>Total Adjustments</b>	<b>\$266</b>			<b>\$266</b>	<b>(\$701,421)</b>
<b>Cash Provided By (Used for) Total</b>	<b>(\$2,596,660)</b>			<b>(\$2,596,660)</b>	<b>(\$201,877)</b>
<hr/>					

COMBINED STATEMENT OF CASH FLOWS  
SCHEDULE OF NONCASH INVESTING, CAPITAL, AND FINANCING ACTIVITIES

Explanation of Transaction and Balance Sheet Effect	Amount
Total	

LEA : 123466403     Pottstown SD

Printed 3/6/2025 12:48:39 PM

Amounts Expressed in Whole Dollars		<u>Private Purpose Trust</u> <u>(71)</u>	<u>Investment Trust</u> <u>(72)</u>	<u>Pension Trust</u> <u>(73)</u>	<u>Student Activity Custodial</u> <u>(81)</u>
<b>Assets And Deferred Outflows Of Resources</b>					
<b>Assets</b>					
0100	Cash and Cash Equivalents	210,707			
0110	Investments				
0130	Due From Other Funds				
0140	Due from Other Governments, Primary Government and Component Units				
0150	Other Receivables				
0170	Inventories				
0180	Prepaid Expenses (Expenditures)				
0190	Other Current Assets				
0220	Buildings and Building Improvements (Net)				
0230	Tangible Property and Intangible Right-To-Use Assets (Net)				
<b>Total Assets</b>		<b>\$210,707</b>			
0910	Deferred Outflows of Resources				
<b>Total Assets And Deferred Outflows Of Resources</b>		<b>\$210,707</b>			

LEA : 123466403     Pottstown SD

Printed 3/6/2025 12:48:39 PM

Amounts Expressed in Whole Dollars		<u>Other Custodial</u> <u>(89)</u>	<u>Fiduciary Component Units</u> <u>(98)</u>	<u>Total Fiduciary Funds</u>
<b>Assets And Deferred Outflows Of Resources</b>				
<b>Assets</b>				
0100	Cash and Cash Equivalents			210,707
0110	Investments			
0130	Due From Other Funds			
0140	Due from Other Governments, Primary Government and Component Units			
0150	Other Receivables			
0170	Inventories			
0180	Prepaid Expenses (Expenditures)			
0190	Other Current Assets			
0220	Buildings and Building Improvements (Net)			
0230	Tangible Property and Intangible Right-To-Use Assets (Net)			
<b>Total Assets</b>				<b>\$210,707</b>
0910	Deferred Outflows of Resources			
<b>Total Assets And Deferred Outflows Of Resources</b>				<b>\$210,707</b>

LEA : 123466403     Pottstown SD

Printed 3/6/2025 12:48:39 PM

Amounts Expressed in Whole Dollars		<u>Private Purpose Trust</u>	<u>Investment Trust</u>	<u>Pension Trust</u>	<u>Student Activity Custodial</u>
		<u>(71)</u>	<u>(72)</u>	<u>(73)</u>	<u>(81)</u>
<b>Liabilities, Deferred Inflows Of Resources And Net Position</b>					
<b>Liabilities</b>					
0400	Due to Other Funds				
0410	Due to Other Governments, Primary Government and Component Units				
0420	Accounts Payable				
0430	Contracts Payable				
0450	Short-Term Payables				
0460	Payroll Accruals and Withholdings				
0480	Unearned Revenues				
0490	Other Current Liabilities				
<b>Total Liabilities</b>					
0950	Deferred Inflows of Resources				
<b>Net Position</b>					
0791	Net Investment in Capital Assets				
0009	Restricted Net Position (0792 – 0798)	182,540			
0799	Unrestricted Net Position	28,167			
<b>Total Net Position</b>		<b>\$210,707</b>			
<b>Total Liabilities, Deferred Inflows Of Resources And Net Position</b>		<b>\$210,707</b>			

LEA : 123466403     Pottstown SD

Printed 3/6/2025 12:48:39 PM

Amounts Expressed in Whole Dollars		<u>Other Custodial</u> <u>(89)</u>	<u>Fiduciary Component Units</u> <u>(98)</u>	<u>Total Fiduciary Funds</u>
<b>Liabilities, Deferred Inflows Of Resources And Net Position</b>				
<b>Liabilities</b>				
0400	Due to Other Funds			
0410	Due to Other Governments, Primary Government and Component Units			
0420	Accounts Payable			
0430	Contracts Payable			
0450	Short-Term Payables			
0460	Payroll Accruals and Withholdings			
0480	Unearned Revenues			
0490	Other Current Liabilities			
<b>Total Liabilities</b>				
0950	Deferred Inflows of Resources			
<b>Net Position</b>				
0791	Net Investment in Capital Assets			
0009	Restricted Net Position (0792 – 0798)			182,540
0799	Unrestricted Net Position			28,167
<b>Total Net Position</b>				<b>\$210,707</b>
<b>Total Liabilities, Deferred Inflows Of Resources And Net Position</b>				<b>\$210,707</b>

LEA : 123466403     Pottstown SD

Printed 3/6/2025 12:48:40 PM

Amounts Expressed in Whole Dollars		<u>Private Purpose Trust</u> <u>(71)</u>	<u>Investment Trust</u> <u>(72)</u>	<u>Pension Trust</u> <u>(73)</u>	<u>Student Activity</u> <u>Custodial</u> <u>(81)</u>	<u>Other Custodial</u> <u>(89)</u>	<u>Fiduciary Component</u> <u>Units</u> <u>(98)</u>
<b>Additions</b>							
0091	Gifts and Contributions	43,900					
0095	Net Investment Earnings	8,398					
0092	Other Additions						
<b>Deductions</b>							
0093	Scholarships Awarded						
0094	Other Deductions	24,131					
<b>Change In Net Position</b>		<b>\$28,167</b>					
0006	Net Position – Beginning of Fiscal Year	182,540					
0007	Net Position Held in Trust for Pension Benefits						
<b>Net Position - End of Fiscal Year</b>		<b>\$210,707</b>					

LEA : 123466403     Pottstown SD

Printed 3/6/2025 12:48:40 PM

Amounts Expressed in Whole Dollars		<u>Total Fiduciary</u>
		<u>Funds</u>
<b>Additions</b>		
0091	Gifts and Contributions	43,900
0095	Net Investment Earnings	8,398
0092	Other Additions	
<b>Deductions</b>		
0093	Scholarships Awarded	
0094	Other Deductions	24,131
<b>Change In Net Position</b>		<b>\$28,167</b>
0006	Net Position – Beginning of Fiscal Year	182,540
0007	Net Position Held in Trust for Pension Benefits	
<b>Net Position - End of Fiscal Year</b>		<b>\$210,707</b>



	Revenue Reported In Current Year	Current Year Tax Accrual	Prior Year Tax Accrual	Taxes Collected In Current Year
<b>Revenue from Local Sources</b>				
6111 Current Real Estate Taxes	28,730,859.00			28,730,859.00
6112 Interim Real Estate Taxes	175,384.00			175,384.00
6113 Public Utility Realty Taxes	30,638.00			30,638.00
6114 Payments in Lieu of Current Taxes - State / Local	34,637.00			34,637.00
6120 Current Per Capita Taxes, Section 679	29,572.00			29,572.00
6141 Current Act 511 Per Capita Taxes	29,572.00			29,572.00
6143 Current Act 511 Local Services Taxes	45,502.00			45,502.00
6151 Current Act 511 Earned Income Taxes	2,962,702.00			2,962,702.00
6152 Current Act 511 Occupation Taxes	176,797.00			176,797.00
6153 Current Act 511 Real Estate Transfer Taxes	525,990.00			525,990.00
6411 Delinquent Real Estate Taxes	939,558.00			939,558.00
6420 Delinquent Per Capita Taxes, Section 679	26,664.00			26,664.00
6440 Delinquent Local Enabling Taxes - Flat Rate Assessments	26,664.00			26,664.00
6452 Delinquent Act 511 Occupation Taxes	225,716.00			225,716.00
6500 Earnings on Investments	1,271,687.00			
6700 Revenues from LEA Activities	27,765.00			
6832 Federal IDEA Revenue Received as Pass Through	940,415.00			
6910 Rentals	65,990.00			
6920 Contributions and Donations from Private Sources	54,896.00			
6961 Transportation Services Provided Other Pennsylvania LEAs	769.00			
6991 Refunds of a Prior Year Expenditure	152,610.00			
6999 Other Revenues Not Specified Above	466,598.00			
<b>TOTAL Revenue from Local Sources</b>	<b>\$36,940,985.00</b>			<b>\$33,960,255.00</b>

	Revenue Reported In Current Year			
<b><u>Revenue from State Sources</u></b>				
7111 Basic Education Funding-Formula	19,577,501.00			
7160 Tuition for Orphans Subsidy	80,736.00			
7220 Vocational Education	276,050.00			
7271 Special Education funds for School-Aged Pupils	3,210,321.00			
7292 Pre-K Counts	2,620,000.00			
7311 Pupil Transportation Subsidy	612,447.00			
7312 Nonpublic and Charter School Pupil Transportation Subsidy	8,085.00			
7320 Rental and Sinking Fund Payments / Building Reimbursement Subsidy	1,119,467.00			
7330 Health Services (Medical, Dental, Nurse, Act 25)	69,650.00			
7340 State Property Tax Reduction Allocation	2,047,500.00			
7361 School Safety and Security Grants	468,633.00			
7505 Ready to Learn Block Grant	3,059,007.00			
7509 Supplemental Equipment Grants	30,408.00			
7810 State Share of Social Security and Medicare Taxes	1,443,064.00			
7820 State Share of Retirement Contributions	7,918,894.00			
<b>TOTAL Revenue from State Sources</b>	<b>\$42,541,763.00</b>			

	Revenue Reported In Current Year			
<b><u>Revenue from Federal Sources</u></b>				
8514 Title I - Improving the Academic Achievement of the Disadvantaged	1,907,374.00			
8515 Title II - Preparing, Training, and Recruiting High Quality Teachers and Principals	176,169.00			
8517 Title IV - 21st Century Schools	596,103.00			
8521 Vocational Education - Operating Expenditures	86,245.00			
8690 Other Restricted Federal Grants-in-Aid Through the Commonwealth of PA	759,380.00			
8744 ARP ESSER - Elementary and Secondary School Emergency Relief Fund	4,077,375.00			
8747 ARP ECF - Emergency Connectivity Fund	93,583.00			
8749 Other CARES Act Funding	80,909.00			
8751 ARP ESSER Learning Loss	199,790.00			
8753 ARP ESSER Afterschool Programs	62,754.00			
8755 ARP ESSER Emergency Relief for Other Educational Entities	48,138.00			
8810 School-Based Access Medicaid Reimbursement Program (SBAP) Reimbursements (Access)	94,050.00			
8820 Medical Assistance Reimbursement for Administrative Claiming (Quarterly) Program	9,209.00			
<b>TOTAL Revenue from Federal Sources</b>	<b>\$8,191,079.00</b>			

	Revenue Reported <u>In Current Year</u>	
<b><u>Other Financing Sources</u></b>		
9220 Leases and Other Right-to-Use Arrangements	248,611.00	
<b>TOTAL Other Financing Sources</b>	<b>\$248,611.00</b>	
<b>TOTAL FROM ALL SOURCES</b>	<b>\$87,922,438.00</b>	<b>\$33,960,255.00</b>

LEA : 123466403     Pottstown SD

Printed 3/6/2025 12:48:43 PM

	<u>General Fund (10)</u>	<u>Student Sponsored Activity Fund (21)</u>	<u>Public Purpose Trust (27)</u>	<u>Other Compt Approved (28)</u>	<u>Athletic / Activity (29)</u>	<u>Capital Reserve (690, 1850) (31)</u>
<b>6000 Revenue from Local Sources</b>						
6111 Current Real Estate Taxes	28,730,859.00					
6112 Interim Real Estate Taxes	175,384.00					
6113 Public Utility Realty Taxes	30,638.00					
6114 Payments in Lieu of Current Taxes - State / Local	34,637.00					
6120 Current Per Capita Taxes, Section 679	29,572.00					
6141 Current Act 511 Per Capita Taxes	29,572.00					
6143 Current Act 511 Local Services Taxes	45,502.00					
6151 Current Act 511 Earned Income Taxes	2,962,702.00					
6152 Current Act 511 Occupation Taxes	176,797.00					
6153 Current Act 511 Real Estate Transfer Taxes	525,990.00					
6411 Delinquent Real Estate Taxes	939,558.00					
6420 Delinquent Per Capita Taxes, Section 679	26,664.00					
6440 Delinquent Local Enabling Taxes - Flat Rate Assessments	26,664.00					
6452 Delinquent Act 511 Occupation Taxes	225,716.00					
6500 Earnings on Investments	1,271,687.00				5,332.00	
6700 Revenues from LEA Activities	27,765.00				41,767.00	
6832 Federal IDEA Revenue Received as Pass Through	940,415.00					
6910 Rentals	65,990.00					
6920 Contributions and Donations from Private Sources	54,896.00					
6961 Transportation Services Provided Other Pennsylvania LEAs	769.00					
6991 Refunds of a Prior Year Expenditure	152,610.00					
6999 Other Revenues Not Specified Above	466,598.00					
<b>6000 Total Revenue from Local Sources</b>	<b>\$36,940,985.00</b>				<b>\$47,099.00</b>	
<b>7000 Revenue from State Sources</b>						
7111 Basic Education Funding-Formula	19,577,501.00					
7160 Tuition for Orphans Subsidy	80,736.00					
7220 Vocational Education	276,050.00					
7271 Special Education funds for School-Aged Pupils	3,210,321.00					
7292 Pre-K Counts	2,620,000.00					
7311 Pupil Transportation Subsidy	612,447.00					
7312 Nonpublic and Charter School Pupil Transportation Subsidy	8,085.00					
7320 Rental and Sinking Fund Payments / Building Reimbursement Subsidy	1,119,467.00					
7330 Health Services (Medical, Dental, Nurse, Act 25)	69,650.00					
7340 State Property Tax Reduction Allocation	2,047,500.00					
7361 School Safety and Security Grants	468,633.00					

LEA : 123466403     Pottstown SD

Printed 3/6/2025 12:48:43 PM

	<u>Capital Reserve</u> <u>(1431) (32)</u>	<u>Other Capital</u> <u>Projects Fund (39)</u>	<u>Debt Service (40)</u>	<u>Permanent (90)</u>	<u>Total</u>
<b>6000 Revenue from Local Sources</b>					
6111 Current Real Estate Taxes					28,730,859.00
6112 Interim Real Estate Taxes					175,384.00
6113 Public Utility Realty Taxes					30,638.00
6114 Payments in Lieu of Current Taxes - State / Local					34,637.00
6120 Current Per Capita Taxes, Section 679					29,572.00
6141 Current Act 511 Per Capita Taxes					29,572.00
6143 Current Act 511 Local Services Taxes					45,502.00
6151 Current Act 511 Earned Income Taxes					2,962,702.00
6152 Current Act 511 Occupation Taxes					176,797.00
6153 Current Act 511 Real Estate Transfer Taxes					525,990.00
6411 Delinquent Real Estate Taxes					939,558.00
6420 Delinquent Per Capita Taxes, Section 679					26,664.00
6440 Delinquent Local Enabling Taxes - Flat Rate Assessments					26,664.00
6452 Delinquent Act 511 Occupation Taxes					225,716.00
6500 Earnings on Investments		122,417.56			1,399,436.56
6700 Revenues from LEA Activities					69,532.00
6832 Federal IDEA Revenue Received as Pass Through					940,415.00
6910 Rentals					65,990.00
6920 Contributions and Donations from Private Sources					54,896.00
6961 Transportation Services Provided Other Pennsylvania LEAs					769.00
6991 Refunds of a Prior Year Expenditure					152,610.00
6999 Other Revenues Not Specified Above					466,598.00
<b>6000 Total Revenue from Local Sources</b>		<b>\$122,417.56</b>			<b>\$37,110,501.56</b>
<b>7000 Revenue from State Sources</b>					
7111 Basic Education Funding-Formula					19,577,501.00
7160 Tuition for Orphans Subsidy					80,736.00
7220 Vocational Education					276,050.00
7271 Special Education funds for School-Aged Pupils					3,210,321.00
7292 Pre-K Counts					2,620,000.00
7311 Pupil Transportation Subsidy					612,447.00
7312 Nonpublic and Charter School Pupil Transportation Subsidy					8,085.00
7320 Rental and Sinking Fund Payments / Building Reimbursement Subsidy					1,119,467.00
7330 Health Services (Medical, Dental, Nurse, Act 25)					69,650.00
7340 State Property Tax Reduction Allocation					2,047,500.00
7361 School Safety and Security Grants					468,633.00

LEA : 123466403     Pottstown SD

Printed 3/6/2025 12:48:43 PM

	<u>General Fund (10)</u>	<u>Student Sponsored Activity Fund (21)</u>	<u>Public Purpose Trust (27)</u>	<u>Other Compt Approved (28)</u>	<u>Athletic / Activity (29)</u>	<u>Capital Reserve (690, 1850) (31)</u>
<b>7000 Revenue from State Sources</b>						
7505 Ready to Learn Block Grant	3,059,007.00					
7509 Supplemental Equipment Grants	30,408.00					
7810 State Share of Social Security and Medicare Taxes	1,443,064.00					
7820 State Share of Retirement Contributions	7,918,894.00					
<b>7000 Total Revenue from State Sources</b>	<b>\$42,541,763.00</b>					
<b>8000 Revenue from Federal Sources</b>						
8514 Title I - Improving the Academic Achievement of the Disadvantaged	1,907,374.00					
8515 Title II - Preparing, Training, and Recruiting High Quality Teachers and Principals	176,169.00					
8517 Title IV - 21st Century Schools	596,103.00					
8521 Vocational Education - Operating Expenditures	86,245.00					
8690 Other Restricted Federal Grants-in-Aid Through the Commonwealth of PA	759,380.00					
8744 ARP ESSER - Elementary and Secondary School Emergency Relief Fund	4,077,375.00					
8747 ARP ECF - Emergency Connectivity Fund	93,583.00					
8749 Other CARES Act Funding	80,909.00					
8751 ARP ESSER Learning Loss	199,790.00					
8753 ARP ESSER Afterschool Programs	62,754.00					
8755 ARP ESSER Emergency Relief for Other Educational Entities	48,138.00					
8810 School-Based Access Medicaid Reimbursement Program (SBAP) Reimbursements (Access)	94,050.00					
8820 Medical Assistance Reimbursement for Administrative Claiming (Quarterly) Program	9,209.00					
<b>8000 Total Revenue from Federal Sources</b>	<b>\$8,191,079.00</b>					
<b>9000 Other Financing Sources</b>						
9220 Leases and Other Right-to-Use Arrangements	248,611.00					
<b>9000 Total Other Financing Sources</b>	<b>\$248,611.00</b>					
<b>Total From All Sources</b>	<b>\$87,922,438.00</b>				<b>\$47,099.00</b>	

LEA : 123466403     Pottstown SD

Printed 3/6/2025 12:48:43 PM

	<u>Capital Reserve</u> <u>(1431) (32)</u>	<u>Other Capital</u> <u>Projects Fund (39)</u>	<u>Debt Service (40)</u>	<u>Permanent (90)</u>	<u>Total</u>
<b>7000 Revenue from State Sources</b>					
7505 Ready to Learn Block Grant					3,059,007.00
7509 Supplemental Equipment Grants					30,408.00
7810 State Share of Social Security and Medicare Taxes					1,443,064.00
7820 State Share of Retirement Contributions					7,918,894.00
<b>7000 Total Revenue from State Sources</b>					<b>\$42,541,763.00</b>
<b>8000 Revenue from Federal Sources</b>					
8514 Title I - Improving the Academic Achievement of the Disadvantaged					1,907,374.00
8515 Title II - Preparing, Training, and Recruiting High Quality Teachers and Principals					176,169.00
8517 Title IV - 21st Century Schools					596,103.00
8521 Vocational Education - Operating Expenditures					86,245.00
8690 Other Restricted Federal Grants-in-Aid Through the Commonwealth of PA					759,380.00
8744 ARP ESSER - Elementary and Secondary School Emergency Relief Fund					4,077,375.00
8747 ARP ECF - Emergency Connectivity Fund					93,583.00
8749 Other CARES Act Funding					80,909.00
8751 ARP ESSER Learning Loss					199,790.00
8753 ARP ESSER Afterschool Programs					62,754.00
8755 ARP ESSER Emergency Relief for Other Educational Entities					48,138.00
8810 School-Based Access Medicaid Reimbursement Program (SBAP) Reimbursements (Access)					94,050.00
8820 Medical Assistance Reimbursement for Administrative Claiming (Quarterly) Program					9,209.00
<b>8000 Total Revenue from Federal Sources</b>					<b>\$8,191,079.00</b>
<b>9000 Other Financing Sources</b>					
9220 Leases and Other Right-to-Use Arrangements					248,611.00
<b>9000 Total Other Financing Sources</b>					<b>\$248,611.00</b>
<b>Total From All Sources</b>		<b>\$122,417.56</b>			<b>\$88,091,954.56</b>



LEA : 123466403     Pottstown SD

Printed 3/6/2025 12:48:45 PM

	<u>General Fund (10)</u>	<u>Student Sponsored Activity Fund (21)</u>	<u>Public Purpose Trust (27)</u>	<u>Other Compt Approved (28)</u>	<u>Athletic / Activity (29)</u>	<u>Capital Reserve (690. 1850) (31)</u>
Revenue from Local Sources	36,940,985.00				47,099.00	
Revenue from State Sources	42,541,763.00					
Revenue from Federal Sources	8,191,079.00					
Other Financing Sources	248,611.00					
Total From All Sources	\$87,922,438.00				\$47,099.00	

LEA : 123466403     Pottstown SD

Printed 3/6/2025 12:48:45 PM

	<u>Capital Reserve (1431)</u> <u>(32)</u>	<u>Other Capital Projects</u> <u>Fund (39)</u>	<u>Debt Service (40)</u>	<u>Permanent (90)</u>	<u>Total</u>
Revenue from Local Sources		122,417.56			37,110,501.56
Revenue from State Sources					42,541,763.00
Revenue from Federal Sources					8,191,079.00
Other Financing Sources					248,611.00
Total From All Sources		\$122,417.56			\$88,091,954.56

LEA : 123466403     Pottstown SD

Printed 3/6/2025 12:48:48 PM

General Fund (10)

1000 Instruction		Total
<b>100 <u>Personnel Services – Salaries</u></b>		
100 Personnel Services – Salaries		22,193,655.54
<b>Total Personnel Services – Salaries</b>		<b>\$22,193,655.54</b>
<b>200 <u>Personnel Services – Employee Benefits</u></b>		
210 Group Insurance – Contracted Provider		4,616,640.86
220 Social Security Contributions		1,629,767.93
230 PSERS Retirement Contributions		7,519,578.55
250 Unemployment Compensation		15,917.65
260 Workers' Compensation		132,966.25
291 Other Retirement Plans		401,006.85
<b>Total Personnel Services – Employee Benefits</b>		<b>\$14,315,878.09</b>
<b>300 <u>Purchased Professional and Technical Services</u></b>		
322 Professional Educational Services – Ius		2,212,326.22
323 Professional Educational Services – Other Educational Agencies		264,029.23
329 Professional Educational Services – Other		1,044,182.79
330 Other Professional Services		841,211.41
340 Technical Services		(17.97)
390 Other Purchased Professional and Technical Services		197,473.98
<b>Total Purchased Professional and Technical Services</b>		<b>\$4,559,205.66</b>
<b>400 <u>Purchased Property Services</u></b>		
410 Cleaning Services		2,719.38
430 Repairs and Maintenance Services		6,330.11
<b>Total Purchased Property Services</b>		<b>\$9,049.49</b>
<b>500 <u>Other Purchased Services</u></b>		
510 Student Transportation Services		49,234.78
530 Communications		13,870.82
549 Other Advertising/Public Relations		278.20
561 Tuition To Other School Districts Within the State		146,676.26
562 Tuition To Pennsylvania Charter Schools		5,818,298.55
563 Tuition To Nonpublic Schools		2,120,850.09
567 Tuition To Approved Private Schools (APS) and PA Chartered Schools for the Deaf and Blind		350,945.95
568 Tuition To Private Residential Rehabilitative Institutions (PRRI) [In-State] and Detention Centers		128,991.85
569 Tuition – Other		3,360.00
580 Travel		40,478.96
594 IU Payment By Withholding for Institutionalized Children's Programs – Special Classes		7,732.88
595 IU Payments By Withholding		595.54
<b>Total Other Purchased Services</b>		<b>\$8,681,313.88</b>
<b>600 <u>Supplies</u></b>		
610 General Supplies		1,009,578.98
640 Books and Periodicals		1,401,894.91
650 Supplies & Fees – Technology Related		702,510.91
<b>Total Supplies</b>		<b>\$3,113,984.80</b>

LEA : 123466403     Pottstown SD

Printed 3/6/2025 12:48:48 PM

<b>General Fund (10)</b>		
<b>1000 Instruction</b>		<b><u>Total</u></b>
<b>700 <u>Property</u></b>		
752 Capital Equipment – Original and Additional	330,183.65	
790 Other Property	223.52	
<b>Total Property</b>	<b>\$330,407.17</b>	
<b>800 <u>Other Objects</u></b>		
810 Dues and Fees	8,415.80	
890 Miscellaneous Expenditures	870,225.00	
<b>Total Other Objects</b>	<b>\$878,640.80</b>	
<b>Total 1000 Instruction</b>	<b>\$54,082,135.43</b>	

LEA : 123466403     Pottstown SD

Printed 3/6/2025 12:48:48 PM

General Fund (10)

1100 Regular Programs – Elementary / Secondary

	Elementary	Secondary	Federal	Total
<b>100 <u>Personnel Services – Salaries</u></b>				
100 Personnel Services – Salaries	6,270,493.21	5,130,403.53	2,714,673.00	14,115,569.74
<b>Total Personnel Services – Salaries</b>	<b>\$6,270,493.21</b>	<b>\$5,130,403.53</b>	<b>\$2,714,673.00</b>	<b>\$14,115,569.74</b>
<b>200 <u>Personnel Services – Employee Benefits</u></b>				
210 Group Insurance – Contracted Provider	1,178,492.71	964,221.31	686,177.05	2,828,891.07
220 Social Security Contributions	461,557.77	377,638.18	199,161.42	1,038,357.37
230 PSERS Retirement Contributions	2,480,347.35	2,029,375.11	333,518.66	4,843,241.12
250 Unemployment Compensation	7,997.96	6,543.78		14,541.74
260 Workers' Compensation	73,131.44	59,834.81		132,966.25
291 Other Retirement Plans	6,359.52	5,203.24	315,803.54	327,366.30
<b>Total Personnel Services – Employee Benefits</b>	<b>\$4,207,886.75</b>	<b>\$3,442,816.43</b>	<b>\$1,534,660.67</b>	<b>\$9,185,363.85</b>
<b>300 <u>Purchased Professional and Technical Services</u></b>				
322 Professional Educational Services – Ius			4,000.00	4,000.00
329 Professional Educational Services – Other	70,321.01	57,535.37	228,035.00	355,891.38
330 Other Professional Services	68.75	56.25	7,350.00	7,475.00
340 Technical Services	(9.88)	(8.09)		(17.97)
390 Other Purchased Professional and Technical Services			4,944.70	4,944.70
<b>Total Purchased Professional and Technical Services</b>	<b>\$70,379.88</b>	<b>\$57,583.53</b>	<b>\$244,329.70</b>	<b>\$372,293.11</b>
<b>400 <u>Purchased Property Services</u></b>				
430 Repairs and Maintenance Services	3,348.52	2,739.69		6,088.21
<b>Total Purchased Property Services</b>	<b>\$3,348.52</b>	<b>\$2,739.69</b>		<b>\$6,088.21</b>
<b>500 <u>Other Purchased Services</u></b>				
510 Student Transportation Services	3,441.83	2,816.04		6,257.87
530 Communications			658.93	658.93
561 Tuition To Other School Districts Within the State	495.00	405.00		900.00
562 Tuition To Pennsylvania Charter Schools	1,457,432.08	1,192,444.42		2,649,876.50
580 Travel	856.32	700.62	10,579.50	12,136.44
<b>Total Other Purchased Services</b>	<b>\$1,462,225.23</b>	<b>\$1,196,366.08</b>	<b>\$11,238.43</b>	<b>\$2,669,829.74</b>
<b>600 <u>Supplies</u></b>				
610 General Supplies	203,840.89	166,778.91	81,929.49	452,549.29
640 Books and Periodicals	586,496.28	479,860.59	131,523.06	1,197,879.93
650 Supplies & Fees – Technology Related	346,459.74	283,467.06	23,164.02	653,090.82
<b>Total Supplies</b>	<b>\$1,136,796.91</b>	<b>\$930,106.56</b>	<b>\$236,616.57</b>	<b>\$2,303,520.04</b>
<b>700 <u>Property</u></b>				
752 Capital Equipment – Original and Additional			188,619.45	188,619.45
790 Other Property	122.94	100.58		223.52
<b>Total Property</b>	<b>\$122.94</b>	<b>\$100.58</b>	<b>\$188,619.45</b>	<b>\$188,842.97</b>
<b>Total 1100 Regular Programs – Elementary / Secondary</b>	<b>\$13,151,253.44</b>	<b>\$10,760,116.40</b>	<b>\$4,930,137.82</b>	<b>\$28,841,507.66</b>

LEA : 123466403     Pottstown SD

Printed 3/6/2025 12:48:48 PM

General Fund (10)

1110 Regular Programs

	Elementary	Secondary	Federal	Total
<b>100 <u>Personnel Services – Salaries</u></b>				
100 Personnel Services – Salaries	6,270,493.21	5,130,403.53	2,714,673.00	14,115,569.74
<b>Total Personnel Services – Salaries</b>	<b>\$6,270,493.21</b>	<b>\$5,130,403.53</b>	<b>\$2,714,673.00</b>	<b>\$14,115,569.74</b>
<b>200 <u>Personnel Services – Employee Benefits</u></b>				
210 Group Insurance – Contracted Provider	1,178,492.71	964,221.31	686,177.05	2,828,891.07
220 Social Security Contributions	461,557.77	377,638.18	199,161.42	1,038,357.37
230 PSERS Retirement Contributions	2,480,347.35	2,029,375.11	333,518.66	4,843,241.12
250 Unemployment Compensation	7,997.96	6,543.78		14,541.74
260 Workers' Compensation	73,131.44	59,834.81		132,966.25
291 Other Retirement Plans	6,359.52	5,203.24	315,803.54	327,366.30
<b>Total Personnel Services – Employee Benefits</b>	<b>\$4,207,886.75</b>	<b>\$3,442,816.43</b>	<b>\$1,534,660.67</b>	<b>\$9,185,363.85</b>
<b>300 <u>Purchased Professional and Technical Services</u></b>				
322 Professional Educational Services – Ius			4,000.00	4,000.00
329 Professional Educational Services – Other	70,321.01	57,535.37	228,035.00	355,891.38
330 Other Professional Services	68.75	56.25	7,350.00	7,475.00
340 Technical Services	(9.88)	(8.09)		(17.97)
390 Other Purchased Professional and Technical Services			4,944.70	4,944.70
<b>Total Purchased Professional and Technical Services</b>	<b>\$70,379.88</b>	<b>\$57,583.53</b>	<b>\$244,329.70</b>	<b>\$372,293.11</b>
<b>400 <u>Purchased Property Services</u></b>				
430 Repairs and Maintenance Services	3,348.52	2,739.69		6,088.21
<b>Total Purchased Property Services</b>	<b>\$3,348.52</b>	<b>\$2,739.69</b>		<b>\$6,088.21</b>
<b>500 <u>Other Purchased Services</u></b>				
510 Student Transportation Services	3,441.83	2,816.04		6,257.87
530 Communications			658.93	658.93
561 Tuition To Other School Districts Within the State	495.00	405.00		900.00
562 Tuition To Pennsylvania Charter Schools	1,457,432.08	1,192,444.42		2,649,876.50
580 Travel	856.32	700.62	10,579.50	12,136.44
<b>Total Other Purchased Services</b>	<b>\$1,462,225.23</b>	<b>\$1,196,366.08</b>	<b>\$11,238.43</b>	<b>\$2,669,829.74</b>
<b>600 <u>Supplies</u></b>				
610 General Supplies	203,840.89	166,778.91	81,929.49	452,549.29
640 Books and Periodicals	586,496.28	479,860.59	131,523.06	1,197,879.93
650 Supplies & Fees – Technology Related	346,459.74	283,467.06	23,164.02	653,090.82
<b>Total Supplies</b>	<b>\$1,136,796.91</b>	<b>\$930,106.56</b>	<b>\$236,616.57</b>	<b>\$2,303,520.04</b>
<b>700 <u>Property</u></b>				
752 Capital Equipment – Original and Additional			188,619.45	188,619.45
790 Other Property	122.94	100.58		223.52
<b>Total Property</b>	<b>\$122.94</b>	<b>\$100.58</b>	<b>\$188,619.45</b>	<b>\$188,842.97</b>
<b>Total 1110 Regular Programs</b>	<b>\$13,151,253.44</b>	<b>\$10,760,116.40</b>	<b>\$4,930,137.82</b>	<b>\$28,841,507.66</b>

LEA : 123466403     Pottstown SD

Printed 3/6/2025 12:48:48 PM

General Fund (10)

1200 Special Programs – Elementary / Secondary	Elementary	Secondary	Federal	Total
<b>100 Personnel Services – Salaries</b>				
100 Personnel Services – Salaries	2,570,006.63	2,102,732.67	1,008,478.58	5,681,217.88
<b>Total Personnel Services – Salaries</b>	<b>\$2,570,006.63</b>	<b>\$2,102,732.67</b>	<b>\$1,008,478.58</b>	<b>\$5,681,217.88</b>
<b>200 Personnel Services – Employee Benefits</b>				
210 Group Insurance – Contracted Provider	586,457.75	479,828.93	196,888.59	1,263,175.27
220 Social Security Contributions	189,058.89	154,684.56	74,301.70	418,045.15
230 PSERS Retirement Contributions	893,881.26	731,357.40	293,809.14	1,919,047.80
250 Unemployment Compensation	756.75	619.16		1,375.91
291 Other Retirement Plans	6,623.26	5,419.04	40,297.57	52,339.87
<b>Total Personnel Services – Employee Benefits</b>	<b>\$1,676,777.91</b>	<b>\$1,371,909.09</b>	<b>\$605,297.00</b>	<b>\$3,653,984.00</b>
<b>300 Purchased Professional and Technical Services</b>				
322 Professional Educational Services – lus	1,210,505.55	899,992.12		2,110,497.67
323 Professional Educational Services – Other Educational Agencies	305.25	249.75		555.00
329 Professional Educational Services – Other	223,481.82	182,848.78	260,360.81	666,691.41
330 Other Professional Services	358,944.90	293,682.19		652,627.09
390 Other Purchased Professional and Technical Services	48,547.68	39,720.82		88,268.50
<b>Total Purchased Professional and Technical Services</b>	<b>\$1,841,785.20</b>	<b>\$1,416,493.66</b>	<b>\$260,360.81</b>	<b>\$3,518,639.67</b>
<b>500 Other Purchased Services</b>				
510 Student Transportation Services	7,297.04	5,970.29		13,267.33
530 Communications	5,011.79	4,100.54		9,112.33
549 Other Advertising/Public Relations	153.01	125.19		278.20
561 Tuition To Other School Districts Within the State	5,268.66	4,310.73		9,579.39
562 Tuition To Pennsylvania Charter Schools	1,735,863.83	1,420,252.22		3,156,116.05
563 Tuition To Nonpublic Schools	1,116,435.23	913,447.01	22,658.10	2,052,540.34
567 Tuition To Approved Private Schools (APS) and PA Chartered Schools for the Deaf and Blind	193,020.27	157,925.68		350,945.95
569 Tuition – Other	1,848.00	1,512.00		3,360.00
580 Travel	1,786.54	1,461.72		3,248.26
594 IU Payment By Withholding for Institutionalized Children's Programs – Special Classes	4,253.08	3,479.80		7,732.88
<b>Total Other Purchased Services</b>	<b>\$3,070,937.45</b>	<b>\$2,512,585.18</b>	<b>\$22,658.10</b>	<b>\$5,606,180.73</b>
<b>600 Supplies</b>				
610 General Supplies	111,346.10	91,101.35	6,339.68	208,787.13
640 Books and Periodicals	55,183.12	45,149.82	43,735.00	144,067.94
650 Supplies & Fees – Technology Related	505.23	413.37	34,269.66	35,188.26
<b>Total Supplies</b>	<b>\$167,034.45</b>	<b>\$136,664.54</b>	<b>\$84,344.34</b>	<b>\$388,043.33</b>
<b>800 Other Objects</b>				
810 Dues and Fees	1,493.25	1,221.75		2,715.00
<b>Total Other Objects</b>	<b>\$1,493.25</b>	<b>\$1,221.75</b>		<b>\$2,715.00</b>
<b>Total 1200 Special Programs – Elementary / Secondary</b>	<b>\$9,328,034.89</b>	<b>\$7,541,606.89</b>	<b>\$1,981,138.83</b>	<b>\$18,850,780.61</b>

LEA : 123466403     Pottstown SD

Printed 3/6/2025 12:48:48 PM

General Fund (10)

1210 Life Skills Support

	<u>Elementary</u>	<u>Secondary</u>	<u>Federal</u>	<u>Total</u>
<b>100 <u>Personnel Services – Salaries</u></b>				
100 Personnel Services – Salaries	279,412.09	228,609.89	154,735.62	662,757.60
<b>Total Personnel Services – Salaries</b>	<b>\$279,412.09</b>	<b>\$228,609.89</b>	<b>\$154,735.62</b>	<b>\$662,757.60</b>
<b>200 <u>Personnel Services – Employee Benefits</u></b>				
210 Group Insurance – Contracted Provider	102,029.79	83,478.88	47,589.40	233,098.07
220 Social Security Contributions	20,497.34	16,770.55	10,871.12	48,139.01
230 PSERS Retirement Contributions	97,733.48	79,963.76	52,610.22	230,307.46
250 Unemployment Compensation	8.80	7.20		16.00
<b>Total Personnel Services – Employee Benefits</b>	<b>\$220,269.41</b>	<b>\$180,220.39</b>	<b>\$111,070.74</b>	<b>\$511,560.54</b>
<b>300 <u>Purchased Professional and Technical Services</u></b>				
322 Professional Educational Services – Ius	19,730.26	16,142.94		35,873.20
323 Professional Educational Services – Other Educational Agencies	305.25	249.75		555.00
<b>Total Purchased Professional and Technical Services</b>	<b>\$20,035.51</b>	<b>\$16,392.69</b>		<b>\$36,428.20</b>
<b>500 <u>Other Purchased Services</u></b>				
510 Student Transportation Services	4,951.12	4,050.91		9,002.03
563 Tuition To Nonpublic Schools	21,638.73	17,704.41		39,343.14
<b>Total Other Purchased Services</b>	<b>\$26,589.85</b>	<b>\$21,755.32</b>		<b>\$48,345.17</b>
<b>600 <u>Supplies</u></b>				
610 General Supplies	5,457.90	4,465.55		9,923.45
<b>Total Supplies</b>	<b>\$5,457.90</b>	<b>\$4,465.55</b>		<b>\$9,923.45</b>
<b>Total 1210 Life Skills Support</b>	<b>\$551,764.76</b>	<b>\$451,443.84</b>	<b>\$265,806.36</b>	<b>\$1,269,014.96</b>



LEA : 123466403     Pottstown SD

Printed 3/6/2025 12:48:48 PM

General Fund (10)

1220 Sensory Support

	<u>Elementary</u>	<u>Secondary</u>	<u>Federal</u>	<u>Total</u>
<b>100 <u>Personnel Services – Salaries</u></b>				
100 Personnel Services – Salaries	11,050.99	9,041.71		20,092.70
<b>Total Personnel Services – Salaries</b>	<b>\$11,050.99</b>	<b>\$9,041.71</b>		<b>\$20,092.70</b>
<b>200 <u>Personnel Services – Employee Benefits</u></b>				
210 Group Insurance – Contracted Provider	4,416.14	3,613.18		8,029.32
220 Social Security Contributions	786.37	643.40		1,429.77
230 PSERS Retirement Contributions	3,862.73	3,160.42		7,023.15
<b>Total Personnel Services – Employee Benefits</b>	<b>\$9,065.24</b>	<b>\$7,417.00</b>		<b>\$16,482.24</b>
<b>300 <u>Purchased Professional and Technical Services</u></b>				
322 Professional Educational Services – Ius	115,314.34	94,348.10		209,662.44
329 Professional Educational Services – Other	9,652.24	7,897.29		17,549.53
<b>Total Purchased Professional and Technical Services</b>	<b>\$124,966.58</b>	<b>\$102,245.39</b>		<b>\$227,211.97</b>
<b>500 <u>Other Purchased Services</u></b>				
563 Tuition To Nonpublic Schools	844.62	691.05		1,535.67
<b>Total Other Purchased Services</b>	<b>\$844.62</b>	<b>\$691.05</b>		<b>\$1,535.67</b>
<b>600 <u>Supplies</u></b>				
610 General Supplies	173.72	142.13		315.85
<b>Total Supplies</b>	<b>\$173.72</b>	<b>\$142.13</b>		<b>\$315.85</b>
<b>800 <u>Other Objects</u></b>				
810 Dues and Fees	203.50	166.50		370.00
<b>Total Other Objects</b>	<b>\$203.50</b>	<b>\$166.50</b>		<b>\$370.00</b>
<b>Total 1220 Sensory Support</b>	<b>\$146,304.65</b>	<b>\$119,703.78</b>		<b>\$266,008.43</b>

LEA : 123466403     Pottstown SD

Printed 3/6/2025 12:48:48 PM

General Fund (10)

1230 Emotional Support

	Elementary	Secondary	Federal	Total
<b>100 <u>Personnel Services – Salaries</u></b>				
100 Personnel Services – Salaries	850,161.07	695,586.32	188,606.80	1,734,354.19
<b>Total Personnel Services – Salaries</b>	<b>\$850,161.07</b>	<b>\$695,586.32</b>	<b>\$188,606.80</b>	<b>\$1,734,354.19</b>
<b>200 <u>Personnel Services – Employee Benefits</u></b>				
210 Group Insurance – Contracted Provider	240,396.45	196,687.98	39,377.26	476,461.69
220 Social Security Contributions	62,170.44	50,866.73	13,872.75	126,909.92
230 PSERS Retirement Contributions	295,908.41	242,106.88	64,078.24	602,093.53
291 Other Retirement Plans	660.43	540.35		1,200.78
<b>Total Personnel Services – Employee Benefits</b>	<b>\$599,135.73</b>	<b>\$490,201.94</b>	<b>\$117,328.25</b>	<b>\$1,206,665.92</b>
<b>300 <u>Purchased Professional and Technical Services</u></b>				
322 Professional Educational Services – Ius	547,811.40	448,209.32		996,020.72
329 Professional Educational Services – Other	142,773.99	116,815.09		259,589.08
<b>Total Purchased Professional and Technical Services</b>	<b>\$690,585.39</b>	<b>\$565,024.41</b>		<b>\$1,255,609.80</b>
<b>500 <u>Other Purchased Services</u></b>				
510 Student Transportation Services	2,121.50	1,735.77		3,857.27
530 Communications	500.13	409.19		909.32
561 Tuition To Other School Districts Within the State	5,268.66	4,310.73		9,579.39
563 Tuition To Nonpublic Schools	985,066.38	805,963.40		1,791,029.78
580 Travel	113.75	93.07		206.82
<b>Total Other Purchased Services</b>	<b>\$993,070.42</b>	<b>\$812,512.16</b>		<b>\$1,805,582.58</b>
<b>600 <u>Supplies</u></b>				
610 General Supplies	69,686.94	57,016.59		126,703.53
640 Books and Periodicals	519.74	425.25		944.99
650 Supplies & Fees – Technology Related	505.23	413.37		918.60
<b>Total Supplies</b>	<b>\$70,711.91</b>	<b>\$57,855.21</b>		<b>\$128,567.12</b>
<b>Total 1230 Emotional Support</b>	<b>\$3,203,664.52</b>	<b>\$2,621,180.04</b>	<b>\$305,935.05</b>	<b>\$6,130,779.61</b>

LEA : 123466403     Pottstown SD

Printed 3/6/2025 12:48:48 PM

General Fund (10)

1240 Academic Support

	<u>Elementary</u>	<u>Secondary</u>	<u>Federal</u>	<u>Total</u>
<b>100 <u>Personnel Services – Salaries</u></b>				
100 Personnel Services – Salaries	1,161,260.11	950,121.90	97,303.88	2,208,685.89
<b>Total Personnel Services – Salaries</b>	<b>\$1,161,260.11</b>	<b>\$950,121.90</b>	<b>\$97,303.88</b>	<b>\$2,208,685.89</b>
<b>200 <u>Personnel Services – Employee Benefits</u></b>				
210 Group Insurance – Contracted Provider	295,810.27	242,026.55	24,454.22	562,291.04
220 Social Security Contributions	85,841.19	70,233.69	7,122.86	163,197.74
230 PSERS Retirement Contributions	402,584.22	329,387.08	33,083.41	765,054.71
250 Unemployment Compensation	747.95	611.96		1,359.91
291 Other Retirement Plans	3,145.20	2,573.35		5,718.55
<b>Total Personnel Services – Employee Benefits</b>	<b>\$788,128.83</b>	<b>\$644,832.63</b>	<b>\$64,660.49</b>	<b>\$1,497,621.95</b>
<b>300 <u>Purchased Professional and Technical Services</u></b>				
390 Other Purchased Professional and Technical Services	257.64	210.80		468.44
<b>Total Purchased Professional and Technical Services</b>	<b>\$257.64</b>	<b>\$210.80</b>		<b>\$468.44</b>
<b>500 <u>Other Purchased Services</u></b>				
510 Student Transportation Services	224.42	183.61		408.03
563 Tuition To Nonpublic Schools	66,435.85	54,356.61		120,792.46
580 Travel	395.89	323.91		719.80
<b>Total Other Purchased Services</b>	<b>\$67,056.16</b>	<b>\$54,864.13</b>		<b>\$121,920.29</b>
<b>600 <u>Supplies</u></b>				
610 General Supplies	11,489.15	9,400.22		20,889.37
640 Books and Periodicals	22,239.84	18,196.22		40,436.06
<b>Total Supplies</b>	<b>\$33,728.99</b>	<b>\$27,596.44</b>		<b>\$61,325.43</b>
<b>Total 1240 Academic Support</b>	<b>\$2,050,431.73</b>	<b>\$1,677,625.90</b>	<b>\$161,964.37</b>	<b>\$3,890,022.00</b>

LEA : 123466403     Pottstown SD

Printed 3/6/2025 12:48:48 PM

General Fund (10)

1241 Learning Support – Public	Elementary	Secondary	Federal	Total
100 <u>Personnel Services – Salaries</u>				
100 Personnel Services – Salaries	1,111,490.47	909,401.29	97,303.88	2,118,195.64
Total Personnel Services – Salaries	\$1,111,490.47	\$909,401.29	\$97,303.88	\$2,118,195.64
200 <u>Personnel Services – Employee Benefits</u>				
210 Group Insurance – Contracted Provider	283,065.47	231,599.01	24,454.22	539,118.70
220 Social Security Contributions	82,202.85	67,256.87	7,122.86	156,582.58
230 PSERS Retirement Contributions	385,203.42	315,166.43	33,083.41	733,453.26
250 Unemployment Compensation	747.95	611.96		1,359.91
291 Other Retirement Plans	3,145.20	2,573.35		5,718.55
Total Personnel Services – Employee Benefits	\$754,364.89	\$617,207.62	\$64,660.49	\$1,436,233.00
500 <u>Other Purchased Services</u>				
563 Tuition To Nonpublic Schools	66,435.85	54,356.61		120,792.46
580 Travel	316.55	259.00		575.55
Total Other Purchased Services	\$66,752.40	\$54,615.61		\$121,368.01
600 <u>Supplies</u>				
610 General Supplies	7,799.21	6,381.18		14,180.39
640 Books and Periodicals	21,518.07	17,605.69		39,123.76
Total Supplies	\$29,317.28	\$23,986.87		\$53,304.15
Total 1241 Learning Support – Public	\$1,961,925.04	\$1,605,211.39	\$161,964.37	\$3,729,100.80

LEA : 123466403     Pottstown SD

Printed 3/6/2025 12:48:48 PM

General Fund (10)

1243 Gifted Support	Elementary	Secondary	Federal	Total
100 <u>Personnel Services – Salaries</u>				
100 Personnel Services – Salaries	49,769.64	40,720.61		90,490.25
Total Personnel Services – Salaries	\$49,769.64	\$40,720.61		\$90,490.25
200 <u>Personnel Services – Employee Benefits</u>				
210 Group Insurance – Contracted Provider	12,744.80	10,427.54		23,172.34
220 Social Security Contributions	3,638.34	2,976.82		6,615.16
230 PSERS Retirement Contributions	17,380.80	14,220.65		31,601.45
Total Personnel Services – Employee Benefits	\$33,763.94	\$27,625.01		\$61,388.95
300 <u>Purchased Professional and Technical Services</u>				
390 Other Purchased Professional and Technical Services	257.64	210.80		468.44
Total Purchased Professional and Technical Services	\$257.64	\$210.80		\$468.44
500 <u>Other Purchased Services</u>				
510 Student Transportation Services	224.42	183.61		408.03
580 Travel	79.34	64.91		144.25
Total Other Purchased Services	\$303.76	\$248.52		\$552.28
600 <u>Supplies</u>				
610 General Supplies	3,689.94	3,019.04		6,708.98
640 Books and Periodicals	721.77	590.53		1,312.30
Total Supplies	\$4,411.71	\$3,609.57		\$8,021.28
Total 1243 Gifted Support	\$88,506.69	\$72,414.51		\$160,921.20

LEA : 123466403     Pottstown SD

Printed 3/6/2025 12:48:48 PM

General Fund (10)

1270 Multi-Handicapped Support	<u>Elementary</u>	<u>Secondary</u>	<u>Federal</u>	<u>Total</u>
300 <u>Purchased Professional and Technical Services</u>				
322 Professional Educational Services – lus	408,385.94	334,133.95		742,519.89
Total Purchased Professional and Technical Services	\$408,385.94	\$334,133.95		\$742,519.89
500 <u>Other Purchased Services</u>				
563 Tuition To Nonpublic Schools	42,449.65	34,731.54		77,181.19
Total Other Purchased Services	\$42,449.65	\$34,731.54		\$77,181.19
Total 1270 Multi-Handicapped Support	\$450,835.59	\$368,865.49		\$819,701.08

LEA : 123466403     Pottstown SD

Printed 3/6/2025 12:48:48 PM

General Fund (10)

1280 Early Intervention Support

	<u>Elementary</u>	<u>Secondary</u>	<u>Federal</u>	<u>Total</u>
300 <u>Purchased Professional and Technical Services</u>				
322 Professional Educational Services – lus	110,515.17			110,515.17
Total Purchased Professional and Technical Services	\$110,515.17			\$110,515.17
Total 1280 Early Intervention Support	\$110,515.17			\$110,515.17

LEA : 123466403     Pottstown SD

Printed 3/6/2025 12:48:48 PM

General Fund (10)

1290 Special Programs - Other Support	Elementary	Secondary	Federal	Total
100 <u>Personnel Services – Salaries</u>				
100 Personnel Services – Salaries	268,122.37	219,372.85	567,832.28	1,055,327.50
Total Personnel Services – Salaries	\$268,122.37	\$219,372.85	\$567,832.28	\$1,055,327.50
200 <u>Personnel Services – Employee Benefits</u>				
210 Group Insurance – Contracted Provider	(56,194.90)	(45,977.66)	85,467.71	(16,704.85)
220 Social Security Contributions	19,763.55	16,170.19	42,434.97	78,368.71
230 PSERS Retirement Contributions	93,792.42	76,739.26	144,037.27	314,568.95
291 Other Retirement Plans	2,817.63	2,305.34	40,297.57	45,420.54
Total Personnel Services – Employee Benefits	\$60,178.70	\$49,237.13	\$312,237.52	\$421,653.35
300 <u>Purchased Professional and Technical Services</u>				
322 Professional Educational Services – Ius	8,748.44	7,157.81		15,906.25
329 Professional Educational Services – Other	71,055.59	58,136.40	260,360.81	389,552.80
330 Other Professional Services	358,944.90	293,682.19		652,627.09
390 Other Purchased Professional and Technical Services	48,290.04	39,510.02		87,800.06
Total Purchased Professional and Technical Services	\$487,038.97	\$398,486.42	\$260,360.81	\$1,145,886.20
500 <u>Other Purchased Services</u>				
530 Communications	4,511.66	3,691.35		8,203.01
549 Other Advertising/Public Relations	153.01	125.19		278.20
562 Tuition To Pennsylvania Charter Schools	1,735,863.83	1,420,252.22		3,156,116.05
563 Tuition To Nonpublic Schools			22,658.10	22,658.10
567 Tuition To Approved Private Schools (APS) and PA Chartered Schools for the Deaf and Blind	193,020.27	157,925.68		350,945.95
569 Tuition – Other	1,848.00	1,512.00		3,360.00
580 Travel	1,276.90	1,044.74		2,321.64
594 IU Payment By Withholding for Institutionalized Children’s Programs – Special Classes	4,253.08	3,479.80		7,732.88
Total Other Purchased Services	\$1,940,926.75	\$1,588,030.98	\$22,658.10	\$3,551,615.83
600 <u>Supplies</u>				
610 General Supplies	24,538.39	20,076.86	6,339.68	50,954.93
640 Books and Periodicals	32,423.54	26,528.35	43,735.00	102,686.89
650 Supplies & Fees – Technology Related			34,269.66	34,269.66
Total Supplies	\$56,961.93	\$46,605.21	\$84,344.34	\$187,911.48
800 <u>Other Objects</u>				
810 Dues and Fees	1,289.75	1,055.25		2,345.00
Total Other Objects	\$1,289.75	\$1,055.25		\$2,345.00
Total 1290 Special Programs - Other Support	\$2,814,518.47	\$2,302,787.84	\$1,247,433.05	\$6,364,739.36



LEA : 123466403     Pottstown SD

Printed 3/6/2025 12:48:48 PM

General Fund (10)

1300 Vocational Education	Elementary	Secondary	Federal	Total
100 <u>Personnel Services – Salaries</u>				
100 Personnel Services – Salaries		762,192.47	33,396.64	795,589.11
Total Personnel Services – Salaries		\$762,192.47	\$33,396.64	\$795,589.11
200 <u>Personnel Services – Employee Benefits</u>				
210 Group Insurance – Contracted Provider		210,953.11	8,939.41	219,892.52
220 Social Security Contributions		54,877.62	2,392.00	57,269.62
230 PSERS Retirement Contributions		266,907.30	3,449.14	270,356.44
291 Other Retirement Plans		1,300.68	15,000.00	16,300.68
Total Personnel Services – Employee Benefits		\$534,038.71	\$29,780.55	\$563,819.26
300 <u>Purchased Professional and Technical Services</u>				
330 Other Professional Services		1,699.32		1,699.32
390 Other Purchased Professional and Technical Services			1,286.28	1,286.28
Total Purchased Professional and Technical Services		\$1,699.32	\$1,286.28	\$2,985.60
400 <u>Purchased Property Services</u>				
430 Repairs and Maintenance Services		241.90		241.90
Total Purchased Property Services		\$241.90		\$241.90
500 <u>Other Purchased Services</u>				
510 Student Transportation Services			1,185.95	1,185.95
580 Travel		330.85	11,181.99	11,512.84
Total Other Purchased Services		\$330.85	\$12,367.94	\$12,698.79
600 <u>Supplies</u>				
610 General Supplies		141,867.64	121,655.54	263,523.18
640 Books and Periodicals		28,516.96	1,508.43	30,025.39
650 Supplies & Fees – Technology Related		4,542.82	6,537.20	11,080.02
Total Supplies		\$174,927.42	\$129,701.17	\$304,628.59
700 <u>Property</u>				
752 Capital Equipment – Original and Additional		96,648.00	44,916.20	141,564.20
Total Property		\$96,648.00	\$44,916.20	\$141,564.20
800 <u>Other Objects</u>				
810 Dues and Fees			5,530.80	5,530.80
Total Other Objects			\$5,530.80	\$5,530.80
Total 1300 Vocational Education		\$1,570,078.67	\$256,979.58	\$1,827,058.25

LEA : 123466403     Pottstown SD

Printed 3/6/2025 12:48:48 PM

General Fund (10)

1400 Other Instructional Programs – Elementary / Secondary	Elementary	Secondary	Federal	Total
<b>100 Personnel Services – Salaries</b>				
100 Personnel Services – Salaries	18,741.07	15,333.62	466,816.75	500,891.44
<b>Total Personnel Services – Salaries</b>	<b>\$18,741.07</b>	<b>\$15,333.62</b>	<b>\$466,816.75</b>	<b>\$500,891.44</b>
<b>200 Personnel Services – Employee Benefits</b>				
210 Group Insurance – Contracted Provider	161.99	132.52		294.51
220 Social Security Contributions	1,368.69	1,119.84	35,214.20	37,702.73
230 PSERS Retirement Contributions	32,519.70	26,606.99	48,498.89	107,625.58
291 Other Retirement Plans			5,000.00	5,000.00
<b>Total Personnel Services – Employee Benefits</b>	<b>\$34,050.38</b>	<b>\$27,859.35</b>	<b>\$88,713.09</b>	<b>\$150,622.82</b>
<b>300 Purchased Professional and Technical Services</b>				
322 Professional Educational Services – Ius	53,805.70	44,022.85		97,828.55
323 Professional Educational Services – Other Educational Agencies	137,709.94	112,671.77		250,381.71
329 Professional Educational Services – Other	11,880.00	9,720.00		21,600.00
330 Other Professional Services	50,033.49	40,936.50	88,440.01	179,410.00
390 Other Purchased Professional and Technical Services			41,452.60	41,452.60
<b>Total Purchased Professional and Technical Services</b>	<b>\$253,429.13</b>	<b>\$207,351.12</b>	<b>\$129,892.61</b>	<b>\$590,672.86</b>
<b>500 Other Purchased Services</b>				
510 Student Transportation Services			27,773.63	27,773.63
530 Communications	333.20	272.62	960.12	1,565.94
561 Tuition To Other School Districts Within the State	74,908.28	61,288.59		136,196.87
562 Tuition To Pennsylvania Charter Schools	6,768.30	5,537.70		12,306.00
563 Tuition To Nonpublic Schools	37,570.36	30,739.39		68,309.75
568 Tuition To Private Residential Rehabilitative Institutions (PRRI) [In-State] and Detention Centers	70,945.52	58,046.33		128,991.85
580 Travel	803.74	657.61	11,688.14	13,149.49
<b>Total Other Purchased Services</b>	<b>\$191,329.40</b>	<b>\$156,542.24</b>	<b>\$40,421.89</b>	<b>\$388,293.53</b>
<b>600 Supplies</b>				
610 General Supplies	2,166.85	1,772.87	20,730.48	24,670.20
<b>Total Supplies</b>	<b>\$2,166.85</b>	<b>\$1,772.87</b>	<b>\$20,730.48</b>	<b>\$24,670.20</b>
<b>800 Other Objects</b>				
810 Dues and Fees	93.50	76.50		170.00
<b>Total Other Objects</b>	<b>\$93.50</b>	<b>\$76.50</b>		<b>\$170.00</b>
<b>Total 1400 Other Instructional Programs – Elementary / Secondary</b>	<b>\$499,810.33</b>	<b>\$408,935.70</b>	<b>\$746,574.82</b>	<b>\$1,655,320.85</b>

LEA : 123466403     Pottstown SD

Printed 3/6/2025 12:48:48 PM

General Fund (10)

1420 Summer School	Elementary	Secondary	Federal	Total
<b>100 <u>Personnel Services – Salaries</u></b>				
100 Personnel Services – Salaries	3,917.30	3,205.06	291,989.66	299,112.02
<b>Total Personnel Services – Salaries</b>	<b>\$3,917.30</b>	<b>\$3,205.06</b>	<b>\$291,989.66</b>	<b>\$299,112.02</b>
<b>200 <u>Personnel Services – Employee Benefits</u></b>				
220 Social Security Contributions	298.30	244.07	22,337.43	22,879.80
230 PSERS Retirement Contributions	1,953.13	1,598.00	30,702.00	34,253.13
291 Other Retirement Plans			5,000.00	5,000.00
<b>Total Personnel Services – Employee Benefits</b>	<b>\$2,251.43</b>	<b>\$1,842.07</b>	<b>\$58,039.43</b>	<b>\$62,132.93</b>
<b>300 <u>Purchased Professional and Technical Services</u></b>				
329 Professional Educational Services – Other	11,880.00	9,720.00		21,600.00
330 Other Professional Services			30,824.00	30,824.00
<b>Total Purchased Professional and Technical Services</b>	<b>\$11,880.00</b>	<b>\$9,720.00</b>	<b>\$30,824.00</b>	<b>\$52,424.00</b>
<b>500 <u>Other Purchased Services</u></b>				
510 Student Transportation Services			3,988.35	3,988.35
580 Travel			4,035.63	4,035.63
<b>Total Other Purchased Services</b>			<b>\$8,023.98</b>	<b>\$8,023.98</b>
<b>600 <u>Supplies</u></b>				
610 General Supplies	2,166.85	1,772.87	9,239.00	13,178.72
<b>Total Supplies</b>	<b>\$2,166.85</b>	<b>\$1,772.87</b>	<b>\$9,239.00</b>	<b>\$13,178.72</b>
<b>Total 1420 Summer School</b>	<b>\$20,215.58</b>	<b>\$16,540.00</b>	<b>\$398,116.07</b>	<b>\$434,871.65</b>

LEA : 123466403     Pottstown SD

Printed 3/6/2025 12:48:48 PM

General Fund (10)

1430 Homebound Instruction	<u>Elementary</u>	<u>Secondary</u>	<u>Federal</u>	<u>Total</u>
<b>100 <u>Personnel Services – Salaries</u></b>				
100 Personnel Services – Salaries	231.00	189.00		420.00
<b>Total Personnel Services – Salaries</b>	<b>\$231.00</b>	<b>\$189.00</b>		<b>\$420.00</b>
<b>200 <u>Personnel Services – Employee Benefits</u></b>				
220 Social Security Contributions	17.67	14.46		32.13
230 PSERS Retirement Contributions	78.54	64.26		142.80
<b>Total Personnel Services – Employee Benefits</b>	<b>\$96.21</b>	<b>\$78.72</b>		<b>\$174.93</b>
<b>300 <u>Purchased Professional and Technical Services</u></b>				
322 Professional Educational Services – Ius	2,630.65	2,152.35		4,783.00
323 Professional Educational Services – Other Educational Agencies	137,709.94	112,671.77		250,381.71
<b>Total Purchased Professional and Technical Services</b>	<b>\$140,340.59</b>	<b>\$114,824.12</b>		<b>\$255,164.71</b>
<b>500 <u>Other Purchased Services</u></b>				
563 Tuition To Nonpublic Schools	198.00	162.00		360.00
<b>Total Other Purchased Services</b>	<b>\$198.00</b>	<b>\$162.00</b>		<b>\$360.00</b>
<b>Total 1430 Homebound Instruction</b>	<b>\$140,865.80</b>	<b>\$115,253.84</b>		<b>\$256,119.64</b>

LEA : 123466403     Pottstown SD

Printed 3/6/2025 12:48:48 PM

General Fund (10)

1440 Alternative Regular Education Programs	<u>Elementary</u>	<u>Secondary</u>	<u>Federal</u>	<u>Total</u>
<b>100 <u>Personnel Services – Salaries</u></b>				
100 Personnel Services – Salaries	440.72	360.60		801.32
<b>Total Personnel Services – Salaries</b>	<b>\$440.72</b>	<b>\$360.60</b>		<b>\$801.32</b>
<b>200 <u>Personnel Services – Employee Benefits</u></b>				
210 Group Insurance – Contracted Provider	161.99	132.52		294.51
220 Social Security Contributions	33.72	27.58		61.30
230 PSERS Retirement Contributions	149.85	122.60		272.45
<b>Total Personnel Services – Employee Benefits</b>	<b>\$345.56</b>	<b>\$282.70</b>		<b>\$628.26</b>
<b>300 <u>Purchased Professional and Technical Services</u></b>				
322 Professional Educational Services – Ius	51,175.05	41,870.50		93,045.55
<b>Total Purchased Professional and Technical Services</b>	<b>\$51,175.05</b>	<b>\$41,870.50</b>		<b>\$93,045.55</b>
<b>500 <u>Other Purchased Services</u></b>				
530 Communications	319.16	261.13		580.29
561 Tuition To Other School Districts Within the State	74,908.28	61,288.59		136,196.87
562 Tuition To Pennsylvania Charter Schools	6,768.30	5,537.70		12,306.00
563 Tuition To Nonpublic Schools	37,372.36	30,577.39		67,949.75
568 Tuition To Private Residential Rehabilitative Institutions (PRRI) [In-State] and Detention Centers	70,945.52	58,046.33		128,991.85
580 Travel	803.74	657.61		1,461.35
<b>Total Other Purchased Services</b>	<b>\$191,117.36</b>	<b>\$156,368.75</b>		<b>\$347,486.11</b>
<b>800 <u>Other Objects</u></b>				
810 Dues and Fees	93.50	76.50		170.00
<b>Total Other Objects</b>	<b>\$93.50</b>	<b>\$76.50</b>		<b>\$170.00</b>
<b>Total 1440 Alternative Regular Education Programs</b>	<b>\$243,172.19</b>	<b>\$198,959.05</b>		<b>\$442,131.24</b>

LEA : 123466403     Pottstown SD

Printed 3/6/2025 12:48:48 PM

General Fund (10)

1441 Adjudicated / Court-Placed Programs	<u>Elementary</u>	<u>Secondary</u>	<u>Federal</u>	<u>Total</u>
300 <u>Purchased Professional and Technical Services</u>				
322 Professional Educational Services – Ius	51,175.05	41,870.50		93,045.55
Total Purchased Professional and Technical Services	\$51,175.05	\$41,870.50		\$93,045.55
500 <u>Other Purchased Services</u>				
561 Tuition To Other School Districts Within the State	74,908.28	61,288.59		136,196.87
562 Tuition To Pennsylvania Charter Schools	6,768.30	5,537.70		12,306.00
568 Tuition To Private Residential Rehabilitative Institutions (PRRI) [In-State] and Detention Centers	4,025.70	3,293.75		7,319.45
Total Other Purchased Services	\$85,702.28	\$70,120.04		\$155,822.32
Total 1441 Adjudicated / Court-Placed Programs	\$136,877.33	\$111,990.54		\$248,867.87

LEA : 123466403     Pottstown SD

Printed 3/6/2025 12:48:48 PM

General Fund (10)

1442 Alternative Education Programs	<u>Elementary</u>	<u>Secondary</u>	<u>Federal</u>	<u>Total</u>
<b>100 <u>Personnel Services – Salaries</u></b>				
100 Personnel Services – Salaries	440.72	360.60		801.32
<b>Total Personnel Services – Salaries</b>	<b>\$440.72</b>	<b>\$360.60</b>		<b>\$801.32</b>
<b>200 <u>Personnel Services – Employee Benefits</u></b>				
210 Group Insurance – Contracted Provider	161.99	132.52		294.51
220 Social Security Contributions	33.72	27.58		61.30
230 PSERS Retirement Contributions	149.85	122.60		272.45
<b>Total Personnel Services – Employee Benefits</b>	<b>\$345.56</b>	<b>\$282.70</b>		<b>\$628.26</b>
<b>500 <u>Other Purchased Services</u></b>				
530 Communications	319.16	261.13		580.29
563 Tuition To Nonpublic Schools	37,372.36	30,577.39		67,949.75
568 Tuition To Private Residential Rehabilitative Institutions (PRRI) [In-State] and Detention Centers	66,919.82	54,752.58		121,672.40
580 Travel	803.74	657.61		1,461.35
<b>Total Other Purchased Services</b>	<b>\$105,415.08</b>	<b>\$86,248.71</b>		<b>\$191,663.79</b>
<b>800 <u>Other Objects</u></b>				
810 Dues and Fees	93.50	76.50		170.00
<b>Total Other Objects</b>	<b>\$93.50</b>	<b>\$76.50</b>		<b>\$170.00</b>
<b>Total 1442 Alternative Education Programs</b>	<b>\$106,294.86</b>	<b>\$86,968.51</b>		<b>\$193,263.37</b>

LEA : 123466403     Pottstown SD

Printed 3/6/2025 12:48:48 PM

General Fund (10)

1450 Instructional Programs Outside the Established School Day	<u>Elementary</u>	<u>Secondary</u>	<u>Federal</u>	<u>Total</u>
100 <u>Personnel Services – Salaries</u>				
100 Personnel Services – Salaries	14,152.05	11,578.96	174,827.09	200,558.10
Total Personnel Services – Salaries	\$14,152.05	\$11,578.96	\$174,827.09	\$200,558.10
200 <u>Personnel Services – Employee Benefits</u>				
220 Social Security Contributions	1,019.00	833.73	12,876.77	14,729.50
230 PSERS Retirement Contributions	30,338.18	24,822.13	17,796.89	72,957.20
Total Personnel Services – Employee Benefits	\$31,357.18	\$25,655.86	\$30,673.66	\$87,686.70
300 <u>Purchased Professional and Technical Services</u>				
330 Other Professional Services	50,033.49	40,936.50	57,616.01	148,586.00
390 Other Purchased Professional and Technical Services			41,452.60	41,452.60
Total Purchased Professional and Technical Services	\$50,033.49	\$40,936.50	\$99,068.61	\$190,038.60
500 <u>Other Purchased Services</u>				
510 Student Transportation Services			23,785.28	23,785.28
530 Communications	14.04	11.49	960.12	985.65
580 Travel			7,652.51	7,652.51
Total Other Purchased Services	\$14.04	\$11.49	\$32,397.91	\$32,423.44
600 <u>Supplies</u>				
610 General Supplies			11,491.48	11,491.48
Total Supplies			\$11,491.48	\$11,491.48
Total 1450 Instructional Programs Outside the Established School Day	\$95,556.76	\$78,182.81	\$348,458.75	\$522,198.32



LEA : 123466403     Pottstown SD

Printed 3/6/2025 12:48:48 PM

General Fund (10)

1500 Nonpublic School Programs

<u>Elementary</u>	<u>Secondary</u>	<u>Federal</u>	<u>Total</u>
-------------------	------------------	----------------	--------------

300 Purchased Professional and Technical Services

323 Professional Educational Services – Other Educational Agencies		12,787.52	13,092.52
--	--	-----------	-----------

<b>Total Purchased Professional and Technical Services</b>		<b>\$12,787.52</b>	<b>\$13,092.52</b>
--	--	--------------------	--------------------

<b>Total 1500 Nonpublic School Programs</b>		<b>\$12,787.52</b>	<b>\$13,092.52</b>
---	--	--------------------	--------------------

LEA : 123466403     Pottstown SD

Printed 3/6/2025 12:48:48 PM

General Fund (10)				
1800 Pre-Kindergarten	<u>Elementary</u>	<u>Secondary</u>	<u>Federal</u>	<u>Total</u>
100 <u>Personnel Services – Salaries</u>				
100 Personnel Services – Salaries				1,100,387.37
Total Personnel Services – Salaries				\$1,100,387.37
200 <u>Personnel Services – Employee Benefits</u>				
210 Group Insurance – Contracted Provider				304,387.49
220 Social Security Contributions				78,393.06
230 PSERS Retirement Contributions				379,307.61
Total Personnel Services – Employee Benefits				\$762,088.16
300 <u>Purchased Professional and Technical Services</u>				
390 Other Purchased Professional and Technical Services				61,521.90
Total Purchased Professional and Technical Services				\$61,521.90
400 <u>Purchased Property Services</u>				
410 Cleaning Services				2,719.38
Total Purchased Property Services				\$2,719.38
500 <u>Other Purchased Services</u>				
510 Student Transportation Services				750.00
530 Communications				2,533.62
580 Travel				431.93
595 IU Payments By Withholding				595.54
Total Other Purchased Services				\$4,311.09
600 <u>Supplies</u>				
610 General Supplies			27,430.46	60,049.18
640 Books and Periodicals			28,222.85	29,921.65
650 Supplies & Fees – Technology Related				3,151.81
Total Supplies			\$55,653.31	\$93,122.64
800 <u>Other Objects</u>				
890 Miscellaneous Expenditures				870,225.00
Total Other Objects				\$870,225.00
Total 1800 Pre-Kindergarten			\$55,653.31	\$2,894,375.54

LEA : 123466403     Pottstown SD

Printed 3/6/2025 12:48:48 PM

General Fund (10)				
1801 Pre-K Instruction	<u>Elementary</u>	<u>Secondary</u>	<u>Federal</u>	<u>Total</u>
100 <u>Personnel Services – Salaries</u>				
100 Personnel Services – Salaries				685,193.91
Total Personnel Services – Salaries				\$685,193.91
200 <u>Personnel Services – Employee Benefits</u>				
210 Group Insurance – Contracted Provider				168,703.73
220 Social Security Contributions				51,064.78
230 PSERS Retirement Contributions				232,968.40
Total Personnel Services – Employee Benefits				\$452,736.91
300 <u>Purchased Professional and Technical Services</u>				
390 Other Purchased Professional and Technical Services				3,147.90
Total Purchased Professional and Technical Services				\$3,147.90
500 <u>Other Purchased Services</u>				
530 Communications				2,519.60
580 Travel				249.89
Total Other Purchased Services				\$2,769.49
600 <u>Supplies</u>				
610 General Supplies				4,924.52
640 Books and Periodicals				1,698.80
650 Supplies & Fees – Technology Related				3,151.81
Total Supplies				\$9,775.13
800 <u>Other Objects</u>				
890 Miscellaneous Expenditures				225.00
Total Other Objects				\$225.00
Total 1801 Pre-K Instruction				\$1,153,848.34

LEA : 123466403     Pottstown SD

Printed 3/6/2025 12:48:48 PM

General Fund (10)				
1802 Pre-K Administrative Support				
	<u>Elementary</u>	<u>Secondary</u>	<u>Federal</u>	<u>Total</u>
100 <u>Personnel Services – Salaries</u>				
100 Personnel Services – Salaries				415,193.46
Total Personnel Services – Salaries				\$415,193.46
200 <u>Personnel Services – Employee Benefits</u>				
210 Group Insurance – Contracted Provider				135,683.76
220 Social Security Contributions				27,328.28
230 PSERS Retirement Contributions				146,339.21
Total Personnel Services – Employee Benefits				\$309,351.25
300 <u>Purchased Professional and Technical Services</u>				
390 Other Purchased Professional and Technical Services				58,374.00
Total Purchased Professional and Technical Services				\$58,374.00
400 <u>Purchased Property Services</u>				
410 Cleaning Services				2,719.38
Total Purchased Property Services				\$2,719.38
500 <u>Other Purchased Services</u>				
510 Student Transportation Services				750.00
530 Communications				14.02
595 IU Payments By Withholding				595.54
Total Other Purchased Services				\$1,359.56
600 <u>Supplies</u>				
610 General Supplies			27,430.46	53,502.17
640 Books and Periodicals			28,222.85	28,222.85
Total Supplies			\$55,653.31	\$81,725.02
Total 1802 Pre-K Administrative Support			\$55,653.31	\$868,722.67

LEA : 123466403     Pottstown SD

Printed 3/6/2025 12:48:48 PM

General Fund (10)

1806 Pre-K Professional Development	<u>Elementary</u>	<u>Secondary</u>	<u>Federal</u>	<u>Total</u>
500 <u>Other Purchased Services</u>				
580 Travel				182.04
Total Other Purchased Services				\$182.04
600 <u>Supplies</u>				
610 General Supplies				1,622.49
Total Supplies				\$1,622.49
Total 1806 Pre-K Professional Development				\$1,804.53

LEA : 123466403     Pottstown SD

Printed 3/6/2025 12:48:48 PM

General Fund (10)				
1807 Pre-K Pass-Through Funds (Partners)	<u>Elementary</u>	<u>Secondary</u>	<u>Federal</u>	<u>Total</u>
800 <u>Other Objects</u>				
890 Miscellaneous Expenditures				870,000.00
Total Other Objects				\$870,000.00
Total 1807 Pre-K Pass-Through Funds (Partners)				\$870,000.00

LEA : 123466403     Pottstown SD

Printed 3/6/2025 12:48:51 PM

General Fund (10)

2000 Support Services		Total
100 <u>Personnel Services – Salaries</u>		
100 Personnel Services – Salaries		9,422,806.38
Total Personnel Services – Salaries		\$9,422,806.38
200 <u>Personnel Services – Employee Benefits</u>		
210 Group Insurance – Contracted Provider		1,625,866.07
220 Social Security Contributions		694,182.96
230 PSERS Retirement Contributions		3,175,161.54
240 Tuition Reimbursement		77,580.68
250 Unemployment Compensation		365.45
280 Other Post-Employment Benefits (OPEB)		4,353.00
291 Other Retirement Plans		117,253.21
Total Personnel Services – Employee Benefits		\$5,694,762.91
300 <u>Purchased Professional and Technical Services</u>		
322 Professional Educational Services – Ius		414,675.61
329 Professional Educational Services – Other		1,159,206.18
330 Other Professional Services		1,469,833.79
350 Security / Safety Services		864,929.25
390 Other Purchased Professional and Technical Services		258,707.51
Total Purchased Professional and Technical Services		\$4,167,352.34
400 <u>Purchased Property Services</u>		
410 Cleaning Services		261,462.36
420 Utility Services		94,484.42
430 Repairs and Maintenance Services		876,635.95
440 Rentals		33,487.98
460 Extermination Services		18,654.70
Total Purchased Property Services		\$1,284,725.41
500 <u>Other Purchased Services</u>		
513 Contracted Carriers		2,698,310.62
516 Student Transportation Services From the IU		778,068.72
520 Insurance – General		311,958.80
522 Automotive Liability Insurance		11,445.00
523 General Property and Liability Insurance		41,927.00
530 Communications		193,641.32
549 Other Advertising/Public Relations		5,190.26
580 Travel		16,987.02
592 Services Purchased From Another LEA Within the State		502.44
595 IU Payments By Withholding		16,224.71
Total Other Purchased Services		\$4,074,255.89
600 <u>Supplies</u>		
610 General Supplies		1,173,794.16
620 Energy		631,277.57
640 Books and Periodicals		318,006.41
650 Supplies & Fees – Technology Related		669,302.39

LEA : 123466403     Pottstown SD

Printed 3/6/2025 12:48:51 PM

General Fund (10)

2000 Support Services

Total

Total Supplies		\$2,792,380.53
700 <u>Property</u>		
736	Technology Equipment Lease	248,611.41
752	Capital Equipment – Original and Additional	209,899.94
762	Capitalized Equipment - Replacement	269,660.50
790	Other Property	318,802.20
Total Property		\$1,046,974.05
800 <u>Other Objects</u>		
810	Dues and Fees	29,552.93
830	Interest	7,584.28
890	Miscellaneous Expenditures	2,324.00
Total Other Objects		\$39,461.21
Total 2000 Support Services		\$28,522,718.72



LEA : 123466403     Pottstown SD

Printed 3/6/2025 12:48:51 PM

General Fund (10)

2100 Support Services – Students	Elementary	Secondary	Federal	Total
100 <u>Personnel Services – Salaries</u>				
100 Personnel Services – Salaries	1,059,633.52	866,972.92	230,167.74	2,462,442.99
<b>Total Personnel Services – Salaries</b>	<b>\$1,059,633.52</b>	<b>\$866,972.92</b>	<b>\$230,167.74</b>	<b>\$2,462,442.99</b>
200 <u>Personnel Services – Employee Benefits</u>				
210 Group Insurance – Contracted Provider	167,073.71	136,696.64	53,522.85	436,261.40
220 Social Security Contributions	78,837.24	64,503.21	17,040.02	183,190.69
230 PSERS Retirement Contributions	388,582.82	317,931.40	23,235.85	836,782.30
291 Other Retirement Plans	1,320.00	1,080.00	20,100.00	26,755.25
<b>Total Personnel Services – Employee Benefits</b>	<b>\$635,813.77</b>	<b>\$520,211.25</b>	<b>\$113,898.72</b>	<b>\$1,482,989.64</b>
300 <u>Purchased Professional and Technical Services</u>				
322 Professional Educational Services – Ius	120,175.28	98,325.23		277,300.51
329 Professional Educational Services – Other			993,528.14	993,528.14
330 Other Professional Services	60,081.38	49,157.50		109,533.88
390 Other Purchased Professional and Technical Services				445.00
<b>Total Purchased Professional and Technical Services</b>	<b>\$180,256.66</b>	<b>\$147,482.73</b>	<b>\$993,528.14</b>	<b>\$1,380,807.53</b>
400 <u>Purchased Property Services</u>				
440 Rentals	189.35	154.93		344.28
<b>Total Purchased Property Services</b>	<b>\$189.35</b>	<b>\$154.93</b>		<b>\$344.28</b>
500 <u>Other Purchased Services</u>				
530 Communications	190.49	155.85		346.34
580 Travel			155.49	324.21
592 Services Purchased From Another LEA Within the State	276.34	226.10		502.44
<b>Total Other Purchased Services</b>	<b>\$466.83</b>	<b>\$381.95</b>	<b>\$155.49</b>	<b>\$1,172.99</b>
600 <u>Supplies</u>				
610 General Supplies	18,824.93	15,402.21	17,291.85	51,518.99
640 Books and Periodicals	29,897.69	24,461.75		54,359.44
650 Supplies & Fees – Technology Related	5,312.27	4,346.41		33,398.68
<b>Total Supplies</b>	<b>\$54,034.89</b>	<b>\$44,210.37</b>	<b>\$17,291.85</b>	<b>\$139,277.11</b>
800 <u>Other Objects</u>				
810 Dues and Fees			506.00	506.00
<b>Total Other Objects</b>			<b>\$506.00</b>	<b>\$506.00</b>
<b>Total 2100 Support Services – Students</b>	<b>\$1,930,395.02</b>	<b>\$1,579,414.15</b>	<b>\$1,355,547.94</b>	<b>\$5,467,540.54</b>

LEA : 123466403     Pottstown SD

Printed 3/6/2025 12:48:51 PM

General Fund (10)

2110 Supervision of Student Services	<u>Elementary</u>	<u>Secondary</u>	<u>Federal</u>	<u>Total</u>
100 <u>Personnel Services – Salaries</u>				
100 Personnel Services – Salaries	100,678.60	82,373.43	141,766.10	324,818.13
Total Personnel Services – Salaries	\$100,678.60	\$82,373.43	\$141,766.10	\$324,818.13
200 <u>Personnel Services – Employee Benefits</u>				
210 Group Insurance – Contracted Provider	17,586.95	14,389.32	33,246.43	65,222.70
220 Social Security Contributions	7,377.73	6,036.33	10,511.85	23,925.91
230 PSERS Retirement Contributions	42,094.39	34,440.87	14,217.86	90,753.12
291 Other Retirement Plans	1,320.00	1,080.00	20,100.00	22,500.00
Total Personnel Services – Employee Benefits	\$68,379.07	\$55,946.52	\$78,076.14	\$202,401.73
300 <u>Purchased Professional and Technical Services</u>				
329 Professional Educational Services – Other			95,000.00	95,000.00
330 Other Professional Services	147.73	120.87		268.60
Total Purchased Professional and Technical Services	\$147.73	\$120.87	\$95,000.00	\$95,268.60
400 <u>Purchased Property Services</u>				
440 Rentals	189.35	154.93		344.28
Total Purchased Property Services	\$189.35	\$154.93		\$344.28
500 <u>Other Purchased Services</u>				
530 Communications	190.49	155.85		346.34
Total Other Purchased Services	\$190.49	\$155.85		\$346.34
600 <u>Supplies</u>				
610 General Supplies	2,398.27	1,962.22		4,360.49
650 Supplies & Fees – Technology Related	506.82	414.67		921.49
Total Supplies	\$2,905.09	\$2,376.89		\$5,281.98
Total 2110 Supervision of Student Services	\$172,490.33	\$141,128.49	\$314,842.24	\$628,461.06

LEA : 123466403     Pottstown SD

Printed 3/6/2025 12:48:51 PM

General Fund (10)

2111 Supervision of Student Services – Head of Component	<u>Elementary</u>	<u>Secondary</u>	<u>Federal</u>	<u>Total</u>
100 <u>Personnel Services – Salaries</u>				
100 Personnel Services – Salaries	100,678.60	82,373.43	141,766.10	324,818.13
Total Personnel Services – Salaries	\$100,678.60	\$82,373.43	\$141,766.10	\$324,818.13
200 <u>Personnel Services – Employee Benefits</u>				
210 Group Insurance – Contracted Provider	17,586.95	14,389.32	33,246.43	65,222.70
220 Social Security Contributions	7,377.73	6,036.33	10,511.85	23,925.91
230 PSERS Retirement Contributions	42,094.39	34,440.87	14,217.86	90,753.12
291 Other Retirement Plans	1,320.00	1,080.00	20,100.00	22,500.00
Total Personnel Services – Employee Benefits	\$68,379.07	\$55,946.52	\$78,076.14	\$202,401.73
300 <u>Purchased Professional and Technical Services</u>				
329 Professional Educational Services – Other			95,000.00	95,000.00
330 Other Professional Services	147.73	120.87		268.60
Total Purchased Professional and Technical Services	\$147.73	\$120.87	\$95,000.00	\$95,268.60
400 <u>Purchased Property Services</u>				
440 Rentals	189.35	154.93		344.28
Total Purchased Property Services	\$189.35	\$154.93		\$344.28
500 <u>Other Purchased Services</u>				
530 Communications	190.49	155.85		346.34
Total Other Purchased Services	\$190.49	\$155.85		\$346.34
600 <u>Supplies</u>				
610 General Supplies	2,398.27	1,962.22		4,360.49
650 Supplies & Fees – Technology Related	506.82	414.67		921.49
Total Supplies	\$2,905.09	\$2,376.89		\$5,281.98
Total 2111 Supervision of Student Services – Head of Component	\$172,490.33	\$141,128.49	\$314,842.24	\$628,461.06

LEA : 123466403     Pottstown SD

Printed 3/6/2025 12:48:51 PM

General Fund (10)				
2120 Guidance Services	<u>Elementary</u>	<u>Secondary</u>	<u>Federal</u>	<u>Total</u>
100 <u>Personnel Services – Salaries</u>				
100 Personnel Services – Salaries	472,360.93	386,477.11	65,079.75	923,917.79
Total Personnel Services – Salaries	\$472,360.93	\$386,477.11	\$65,079.75	\$923,917.79
200 <u>Personnel Services – Employee Benefits</u>				
210 Group Insurance – Contracted Provider	59,170.42	48,412.14	20,276.42	127,858.98
220 Social Security Contributions	35,385.21	28,951.53	4,662.13	68,998.87
230 PSERS Retirement Contributions	173,532.94	141,981.50	6,638.10	322,152.54
Total Personnel Services – Employee Benefits	\$268,088.57	\$219,345.17	\$31,576.65	\$519,010.39
300 <u>Purchased Professional and Technical Services</u>				
329 Professional Educational Services – Other			898,528.14	898,528.14
Total Purchased Professional and Technical Services			\$898,528.14	\$898,528.14
500 <u>Other Purchased Services</u>				
580 Travel			155.49	155.49
Total Other Purchased Services			\$155.49	\$155.49
600 <u>Supplies</u>				
610 General Supplies	4,015.70	3,285.58	17,280.85	24,582.13
640 Books and Periodicals	27,875.87	22,807.53		50,683.40
650 Supplies & Fees – Technology Related	4,805.45	3,931.74		8,737.19
Total Supplies	\$36,697.02	\$30,024.85	\$17,280.85	\$84,002.72
Total 2120 Guidance Services	\$777,146.52	\$635,847.13	\$1,012,620.88	\$2,425,614.53

LEA : 123466403     Pottstown SD

Printed 3/6/2025 12:48:51 PM

General Fund (10)

2130 Attendance Services

Elementary                      Secondary                      Federal                      Total

100 <u>Personnel Services – Salaries</u>				
100 Personnel Services – Salaries				59,516.54
<b>Total Personnel Services – Salaries</b>				<b>\$59,516.54</b>
200 <u>Personnel Services – Employee Benefits</u>				
210 Group Insurance – Contracted Provider				18,524.82
220 Social Security Contributions				4,417.57
230 PSERS Retirement Contributions				20,821.46
<b>Total Personnel Services – Employee Benefits</b>				<b>\$43,763.85</b>
300 <u>Purchased Professional and Technical Services</u>				
330 Other Professional Services				295.00
<b>Total Purchased Professional and Technical Services</b>				<b>\$295.00</b>
<b>Total 2130 Attendance Services</b>				<b>\$103,575.39</b>

LEA : 123466403     Pottstown SD

Printed 3/6/2025 12:48:51 PM

General Fund (10)

2140 Psychological Services	Elementary	Secondary	Federal	Total
100 <u>Personnel Services – Salaries</u>				
100 Personnel Services – Salaries	211,616.33	173,140.65	23,321.89	408,078.87
<b>Total Personnel Services – Salaries</b>	<b>\$211,616.33</b>	<b>\$173,140.65</b>	<b>\$23,321.89</b>	<b>\$408,078.87</b>
200 <u>Personnel Services – Employee Benefits</u>				
210 Group Insurance – Contracted Provider	39,062.02	31,959.83		71,021.85
220 Social Security Contributions	15,553.77	12,725.82	1,866.04	30,145.63
230 PSERS Retirement Contributions	76,923.76	62,937.62	2,379.89	142,241.27
<b>Total Personnel Services – Employee Benefits</b>	<b>\$131,539.55</b>	<b>\$107,623.27</b>	<b>\$4,245.93</b>	<b>\$243,408.75</b>
300 <u>Purchased Professional and Technical Services</u>				
322 Professional Educational Services – Ius	117,301.53	95,973.98		213,275.51
330 Other Professional Services	59,933.65	49,036.63		108,970.28
<b>Total Purchased Professional and Technical Services</b>	<b>\$177,235.18</b>	<b>\$145,010.61</b>		<b>\$322,245.79</b>
500 <u>Other Purchased Services</u>				
592 Services Purchased From Another LEA Within the State	276.34	226.10		502.44
<b>Total Other Purchased Services</b>	<b>\$276.34</b>	<b>\$226.10</b>		<b>\$502.44</b>
600 <u>Supplies</u>				
610 General Supplies	8,663.55	7,088.35		15,751.90
<b>Total Supplies</b>	<b>\$8,663.55</b>	<b>\$7,088.35</b>		<b>\$15,751.90</b>
<b>Total 2140 Psychological Services</b>	<b>\$529,330.95</b>	<b>\$433,088.98</b>	<b>\$27,567.82</b>	<b>\$989,987.75</b>

LEA : 123466403     Pottstown SD

Printed 3/6/2025 12:48:51 PM

General Fund (10)

2150 Speech Pathology and Audiology Services	<u>Elementary</u>	<u>Secondary</u>	<u>Federal</u>	<u>Total</u>
<b>100 <u>Personnel Services – Salaries</u></b>				
100 Personnel Services – Salaries	274,977.66	224,981.73		499,959.39
<b>Total Personnel Services – Salaries</b>	<b>\$274,977.66</b>	<b>\$224,981.73</b>		<b>\$499,959.39</b>
<b>200 <u>Personnel Services – Employee Benefits</u></b>				
210 Group Insurance – Contracted Provider	51,254.32	41,935.35		93,189.67
220 Social Security Contributions	20,520.53	16,789.53		37,310.06
230 PSERS Retirement Contributions	96,031.73	78,571.41		174,603.14
<b>Total Personnel Services – Employee Benefits</b>	<b>\$167,806.58</b>	<b>\$137,296.29</b>		<b>\$305,102.87</b>
<b>300 <u>Purchased Professional and Technical Services</u></b>				
322 Professional Educational Services – Ius	2,873.75	2,351.25		5,225.00
<b>Total Purchased Professional and Technical Services</b>	<b>\$2,873.75</b>	<b>\$2,351.25</b>		<b>\$5,225.00</b>
<b>600 <u>Supplies</u></b>				
610 General Supplies	3,747.41	3,066.06		6,813.47
640 Books and Periodicals	2,021.82	1,654.22		3,676.04
<b>Total Supplies</b>	<b>\$5,769.23</b>	<b>\$4,720.28</b>		<b>\$10,489.51</b>
<b>800 <u>Other Objects</u></b>				
810 Dues and Fees			506.00	506.00
<b>Total Other Objects</b>			<b>\$506.00</b>	<b>\$506.00</b>
<b>Total 2150 Speech Pathology and Audiology Services</b>	<b>\$451,427.22</b>	<b>\$369,349.55</b>	<b>\$506.00</b>	<b>\$821,282.77</b>

LEA : 123466403     Pottstown SD

Printed 3/6/2025 12:48:51 PM

General Fund (10)

2160 Social Work Services	<u>Elementary</u>	<u>Secondary</u>	<u>Federal</u>	<u>Total</u>
100 <u>Personnel Services – Salaries</u>				
100 Personnel Services – Salaries				237,300.33
Total Personnel Services – Salaries				\$237,300.33
200 <u>Personnel Services – Employee Benefits</u>				
210 Group Insurance – Contracted Provider				58,831.25
220 Social Security Contributions				17,728.98
230 PSERS Retirement Contributions				82,978.54
Total Personnel Services – Employee Benefits				\$159,538.77
300 <u>Purchased Professional and Technical Services</u>				
390 Other Purchased Professional and Technical Services				120.00
Total Purchased Professional and Technical Services				\$120.00
Total 2160 Social Work Services				\$396,959.10



LEA : 123466403     Pottstown SD

Printed 3/6/2025 12:48:51 PM

General Fund (10)

2170 Student Accounting Services	<u>Elementary</u>	<u>Secondary</u>	<u>Federal</u>	<u>Total</u>
100 <u>Personnel Services – Salaries</u>				
100 Personnel Services – Salaries				8,851.94
Total Personnel Services – Salaries				\$8,851.94
200 <u>Personnel Services – Employee Benefits</u>				
210 Group Insurance – Contracted Provider				1,612.13
220 Social Security Contributions				663.67
230 PSERS Retirement Contributions				3,232.23
291 Other Retirement Plans				4,255.25
Total Personnel Services – Employee Benefits				\$9,763.28
300 <u>Purchased Professional and Technical Services</u>				
322 Professional Educational Services – Ius				58,800.00
390 Other Purchased Professional and Technical Services				325.00
Total Purchased Professional and Technical Services				\$59,125.00
500 <u>Other Purchased Services</u>				
580 Travel				168.72
Total Other Purchased Services				\$168.72
600 <u>Supplies</u>				
650 Supplies & Fees – Technology Related				23,740.00
Total Supplies				\$23,740.00
Total 2170 Student Accounting Services				\$101,648.94

LEA : 123466403     Pottstown SD

Printed 3/6/2025 12:48:51 PM

General Fund (10)

2190 Other Student Services

<u>Elementary</u>	<u>Secondary</u>	<u>Federal</u>	<u>Total</u>
-------------------	------------------	----------------	--------------

600 Supplies

610 General Supplies			11.00	11.00
----------------------	--	--	-------	-------

Total Supplies			\$11.00	\$11.00
----------------	--	--	---------	---------

Total 2190 Other Student Services			\$11.00	\$11.00
-----------------------------------	--	--	---------	---------

LEA : 123466403     Pottstown SD

Printed 3/6/2025 12:48:51 PM

General Fund (10)

<b>2200 Support Services – Instructional Staff</b>	<b><u>Elementary</u></b>	<b><u>Secondary</u></b>	<b><u>Federal</u></b>	<b><u>Total</u></b>
<b>100 <u>Personnel Services – Salaries</u></b>				
100 Personnel Services – Salaries	552,969.72	452,429.76	165,603.70	1,171,003.18
<b>Total Personnel Services – Salaries</b>	<b>\$552,969.72</b>	<b>\$452,429.76</b>	<b>\$165,603.70</b>	<b>\$1,171,003.18</b>
<b>200 <u>Personnel Services – Employee Benefits</u></b>				
210 Group Insurance – Contracted Provider	98,199.81	80,345.30	33,135.67	211,680.78
220 Social Security Contributions	40,265.36	32,944.39	12,058.79	85,268.54
230 PSERS Retirement Contributions	206,324.97	168,811.32	16,387.23	391,523.52
240 Tuition Reimbursement	42,669.37	34,911.31		77,580.68
291 Other Retirement Plans	354.92	290.38	15,071.70	15,717.00
<b>Total Personnel Services – Employee Benefits</b>	<b>\$387,814.43</b>	<b>\$317,302.70</b>	<b>\$76,653.39</b>	<b>\$781,770.52</b>
<b>300 <u>Purchased Professional and Technical Services</u></b>				
322 Professional Educational Services – lus	59,262.50	48,487.50		107,750.00
329 Professional Educational Services – Other			6,874.00	6,874.00
390 Other Purchased Professional and Technical Services	9,335.15	7,637.85	7,702.15	24,675.15
<b>Total Purchased Professional and Technical Services</b>	<b>\$68,597.65</b>	<b>\$56,125.35</b>	<b>\$14,576.15</b>	<b>\$139,299.15</b>
<b>400 <u>Purchased Property Services</u></b>				
430 Repairs and Maintenance Services	58,842.76	48,144.07		106,986.83
440 Rentals	6,366.94	5,209.32		11,576.26
<b>Total Purchased Property Services</b>	<b>\$65,209.70</b>	<b>\$53,353.39</b>		<b>\$118,563.09</b>
<b>500 <u>Other Purchased Services</u></b>				
530 Communications	6,986.80	5,716.46	(279.74)	12,423.52
580 Travel	1,423.72	1,164.86	7,063.66	9,652.24
<b>Total Other Purchased Services</b>	<b>\$8,410.52</b>	<b>\$6,881.32</b>	<b>\$6,783.92</b>	<b>\$22,075.76</b>
<b>600 <u>Supplies</u></b>				
610 General Supplies	27,261.30	22,304.71	14,946.66	64,512.67
640 Books and Periodicals	133,722.76	109,409.52		243,132.28
650 Supplies & Fees – Technology Related	219,122.27	179,281.86	5,668.99	404,073.12
<b>Total Supplies</b>	<b>\$380,106.33</b>	<b>\$310,996.09</b>	<b>\$20,615.65</b>	<b>\$711,718.07</b>
<b>700 <u>Property</u></b>				
790 Other Property	162,424.19	132,892.51		295,316.70
<b>Total Property</b>	<b>\$162,424.19</b>	<b>\$132,892.51</b>		<b>\$295,316.70</b>
<b>800 <u>Other Objects</u></b>				
810 Dues and Fees	336.60	275.40		612.00
<b>Total Other Objects</b>	<b>\$336.60</b>	<b>\$275.40</b>		<b>\$612.00</b>
<b>Total 2200 Support Services – Instructional Staff</b>	<b>\$1,625,869.14</b>	<b>\$1,330,256.52</b>	<b>\$284,232.81</b>	<b>\$3,240,358.47</b>

LEA : 123466403     Pottstown SD

Printed 3/6/2025 12:48:51 PM

General Fund (10)

2210 Supervision of Educational Media Services	<u>Elementary</u>	<u>Secondary</u>	<u>Federal</u>	<u>Total</u>
100 <u>Personnel Services – Salaries</u>				
100 Personnel Services – Salaries	42,383.36	34,677.29	39,826.21	116,886.86
Total Personnel Services – Salaries	\$42,383.36	\$34,677.29	\$39,826.21	\$116,886.86
200 <u>Personnel Services – Employee Benefits</u>				
210 Group Insurance – Contracted Provider	7,768.96	6,356.41	7,749.68	21,875.05
220 Social Security Contributions	3,180.41	2,602.16	2,907.78	8,690.35
230 PSERS Retirement Contributions	14,799.83	12,108.95	4,060.00	30,968.78
291 Other Retirement Plans			15,071.70	15,071.70
Total Personnel Services – Employee Benefits	\$25,749.20	\$21,067.52	\$29,789.16	\$76,605.88
300 <u>Purchased Professional and Technical Services</u>				
322 Professional Educational Services – Ius	55,962.50	45,787.50		101,750.00
Total Purchased Professional and Technical Services	\$55,962.50	\$45,787.50		\$101,750.00
500 <u>Other Purchased Services</u>				
530 Communications	1,713.68	1,402.10		3,115.78
Total Other Purchased Services	\$1,713.68	\$1,402.10		\$3,115.78
600 <u>Supplies</u>				
650 Supplies & Fees – Technology Related	59,869.95	48,984.51		108,854.46
Total Supplies	\$59,869.95	\$48,984.51		\$108,854.46
Total 2210 Supervision of Educational Media Services	\$185,678.69	\$151,918.92	\$69,615.37	\$407,212.98

LEA : 123466403     Pottstown SD

Printed 3/6/2025 12:48:51 PM

General Fund (10)

2211 Supervision of Educational Media Services – Head of Component	<u>Elementary</u>	<u>Secondary</u>	<u>Federal</u>	<u>Total</u>
100 <u>Personnel Services – Salaries</u>				
100 Personnel Services – Salaries	42,383.36	34,677.29	39,826.21	116,886.86
Total Personnel Services – Salaries	\$42,383.36	\$34,677.29	\$39,826.21	\$116,886.86
200 <u>Personnel Services – Employee Benefits</u>				
210 Group Insurance – Contracted Provider	7,768.96	6,356.41	7,749.68	21,875.05
220 Social Security Contributions	3,180.41	2,602.16	2,907.78	8,690.35
230 PSERS Retirement Contributions	14,799.83	12,108.95	4,060.00	30,968.78
291 Other Retirement Plans			15,071.70	15,071.70
Total Personnel Services – Employee Benefits	\$25,749.20	\$21,067.52	\$29,789.16	\$76,605.88
300 <u>Purchased Professional and Technical Services</u>				
322 Professional Educational Services – Ius	55,962.50	45,787.50		101,750.00
Total Purchased Professional and Technical Services	\$55,962.50	\$45,787.50		\$101,750.00
500 <u>Other Purchased Services</u>				
530 Communications	1,713.68	1,402.10		3,115.78
Total Other Purchased Services	\$1,713.68	\$1,402.10		\$3,115.78
600 <u>Supplies</u>				
650 Supplies & Fees – Technology Related	59,869.95	48,984.51		108,854.46
Total Supplies	\$59,869.95	\$48,984.51		\$108,854.46
Total 2211 Supervision of Educational Media Services – Head of Component	\$185,678.69	\$151,918.92	\$69,615.37	\$407,212.98

LEA : 123466403     Pottstown SD

Printed 3/6/2025 12:48:51 PM

General Fund (10)

2220 Technology Support Services	<u>Elementary</u>	<u>Secondary</u>	<u>Federal</u>	<u>Total</u>
100 <u>Personnel Services – Salaries</u>				
100 Personnel Services – Salaries	178,009.41	145,644.05		323,653.46
Total Personnel Services – Salaries	\$178,009.41	\$145,644.05		\$323,653.46
200 <u>Personnel Services – Employee Benefits</u>				
210 Group Insurance – Contracted Provider	36,380.69	29,766.03		66,146.72
220 Social Security Contributions	12,775.22	10,452.45		23,227.67
230 PSERS Retirement Contributions	59,538.32	48,713.17		108,251.49
Total Personnel Services – Employee Benefits	\$108,694.23	\$88,931.65		\$197,625.88
300 <u>Purchased Professional and Technical Services</u>				
329 Professional Educational Services – Other			5,025.00	5,025.00
Total Purchased Professional and Technical Services			\$5,025.00	\$5,025.00
500 <u>Other Purchased Services</u>				
530 Communications	4,792.37	3,921.03	(696.30)	8,017.10
580 Travel	1,407.81	1,151.85		2,559.66
Total Other Purchased Services	\$6,200.18	\$5,072.88	(\$696.30)	\$10,576.76
600 <u>Supplies</u>				
650 Supplies & Fees – Technology Related	2,495.65	2,041.89	4,816.26	9,353.80
Total Supplies	\$2,495.65	\$2,041.89	\$4,816.26	\$9,353.80
Total 2220 Technology Support Services	\$295,399.47	\$241,690.47	\$9,144.96	\$546,234.90

LEA : 123466403     Pottstown SD

Printed 3/6/2025 12:48:51 PM

General Fund (10)

2240 Computer-Assisted Instruction Support Services	<u>Elementary</u>	<u>Secondary</u>	<u>Federal</u>	<u>Total</u>
300 <u>Purchased Professional and Technical Services</u>				
390 Other Purchased Professional and Technical Services	693.00	567.00		1,260.00
Total Purchased Professional and Technical Services	\$693.00	\$567.00		\$1,260.00
400 <u>Purchased Property Services</u>				
430 Repairs and Maintenance Services	58,842.76	48,144.07		106,986.83
440 Rentals	6,366.94	5,209.32		11,576.26
Total Purchased Property Services	\$65,209.70	\$53,353.39		\$118,563.09
600 <u>Supplies</u>				
610 General Supplies	21,304.44	17,430.92		38,735.36
640 Books and Periodicals	82,014.28	67,102.59		149,116.87
650 Supplies & Fees – Technology Related	156,756.67	128,255.46		285,012.13
Total Supplies	\$260,075.39	\$212,788.97		\$472,864.36
700 <u>Property</u>				
790 Other Property	162,424.19	132,892.51		295,316.70
Total Property	\$162,424.19	\$132,892.51		\$295,316.70
Total 2240 Computer-Assisted Instruction Support Services	\$488,402.28	\$399,601.87		\$888,004.15

LEA : 123466403     Pottstown SD

Printed 3/6/2025 12:48:51 PM

General Fund (10)

2250 School Library Services	<u>Elementary</u>	<u>Secondary</u>	<u>Federal</u>	<u>Total</u>
100 <u>Personnel Services – Salaries</u>				
100 Personnel Services – Salaries	158,798.99	129,926.44		288,725.43
Total Personnel Services – Salaries	\$158,798.99	\$129,926.44		\$288,725.43
200 <u>Personnel Services – Employee Benefits</u>				
210 Group Insurance – Contracted Provider	27,440.75	22,451.52		49,892.27
220 Social Security Contributions	11,518.88	9,424.53		20,943.41
230 PSERS Retirement Contributions	55,150.85	45,123.42		100,274.27
291 Other Retirement Plans	354.92	290.38		645.30
Total Personnel Services – Employee Benefits	\$94,465.40	\$77,289.85		\$171,755.25
600 <u>Supplies</u>				
610 General Supplies	2,394.49	1,959.12		4,353.61
640 Books and Periodicals	51,523.15	42,155.30		93,678.45
Total Supplies	\$53,917.64	\$44,114.42		\$98,032.06
Total 2250 School Library Services	\$307,182.03	\$251,330.71		\$558,512.74



LEA : 123466403     Pottstown SD

Printed 3/6/2025 12:48:51 PM

General Fund (10)

2260 Instruction and Curriculum Development Services	<u>Elementary</u>	<u>Secondary</u>	<u>Federal</u>	<u>Total</u>
100 <u>Personnel Services – Salaries</u>				
100 Personnel Services – Salaries	165,442.93	135,362.41	2,770.89	303,576.23
Total Personnel Services – Salaries	\$165,442.93	\$135,362.41	\$2,770.89	\$303,576.23
200 <u>Personnel Services – Employee Benefits</u>				
210 Group Insurance – Contracted Provider	26,609.41	21,771.34		48,380.75
220 Social Security Contributions	12,177.34	9,963.28	211.98	22,352.60
230 PSERS Retirement Contributions	57,950.76	47,414.26	(16.53)	105,348.49
Total Personnel Services – Employee Benefits	\$96,737.51	\$79,148.88	\$195.45	\$176,081.84
300 <u>Purchased Professional and Technical Services</u>				
390 Other Purchased Professional and Technical Services	3,252.15	2,660.85		5,913.00
Total Purchased Professional and Technical Services	\$3,252.15	\$2,660.85		\$5,913.00
500 <u>Other Purchased Services</u>				
530 Communications	480.75	393.33		874.08
580 Travel	15.91	13.01		28.92
Total Other Purchased Services	\$496.66	\$406.34		\$903.00
600 <u>Supplies</u>				
610 General Supplies	3,562.37	2,914.67		6,477.04
640 Books and Periodicals	185.33	151.63		336.96
Total Supplies	\$3,747.70	\$3,066.30		\$6,814.00
800 <u>Other Objects</u>				
810 Dues and Fees	336.60	275.40		612.00
Total Other Objects	\$336.60	\$275.40		\$612.00
Total 2260 Instruction and Curriculum Development Services	\$270,013.55	\$220,920.18	\$2,966.34	\$493,900.07

LEA : 123466403     Pottstown SD

Printed 3/6/2025 12:48:51 PM

General Fund (10)

2270 Instructional Staff Professional Development Services	<u>Elementary</u>	<u>Secondary</u>	<u>Federal</u>	<u>Total</u>
100 <u>Personnel Services – Salaries</u>				
100 Personnel Services – Salaries			123,006.60	123,006.60
Total Personnel Services – Salaries			\$123,006.60	\$123,006.60
200 <u>Personnel Services – Employee Benefits</u>				
210 Group Insurance – Contracted Provider			25,385.99	25,385.99
220 Social Security Contributions			8,939.03	8,939.03
230 PSERS Retirement Contributions	16,028.85	13,114.51	12,343.76	41,487.12
240 Tuition Reimbursement	42,669.37	34,911.31		77,580.68
Total Personnel Services – Employee Benefits	\$58,698.22	\$48,025.82	\$46,668.78	\$153,392.82
300 <u>Purchased Professional and Technical Services</u>				
322 Professional Educational Services – Ius	3,300.00	2,700.00		6,000.00
329 Professional Educational Services – Other			1,849.00	1,849.00
390 Other Purchased Professional and Technical Services	5,390.00	4,410.00	7,702.15	17,502.15
Total Purchased Professional and Technical Services	\$8,690.00	\$7,110.00	\$9,551.15	\$25,351.15
500 <u>Other Purchased Services</u>				
530 Communications			416.56	416.56
580 Travel			7,063.66	7,063.66
Total Other Purchased Services			\$7,480.22	\$7,480.22
600 <u>Supplies</u>				
610 General Supplies			14,946.66	14,946.66
650 Supplies & Fees – Technology Related			852.73	852.73
Total Supplies			\$15,799.39	\$15,799.39
Total 2270 Instructional Staff Professional Development Services	\$67,388.22	\$55,135.82	\$202,506.14	\$325,030.18

LEA : 123466403     Pottstown SD

Printed 3/6/2025 12:48:51 PM

General Fund (10)

2290 Other Instructional Staff Services	<u>Elementary</u>	<u>Secondary</u>	<u>Federal</u>	<u>Total</u>
100 <u>Personnel Services – Salaries</u>				
100 Personnel Services – Salaries	8,335.03	6,819.57		15,154.60
Total Personnel Services – Salaries	\$8,335.03	\$6,819.57		\$15,154.60
200 <u>Personnel Services – Employee Benefits</u>				
220 Social Security Contributions	613.51	501.97		1,115.48
230 PSERS Retirement Contributions	2,856.36	2,337.01		5,193.37
Total Personnel Services – Employee Benefits	\$3,469.87	\$2,838.98		\$6,308.85
Total 2290 Other Instructional Staff Services	\$11,804.90	\$9,658.55		\$21,463.45

LEA : 123466403     Pottstown SD

Printed 3/6/2025 12:48:51 PM

General Fund (10)

2300 Support Services – Administration	Elementary	Secondary	Federal	Total
<b>100 <u>Personnel Services – Salaries</u></b>				
100 Personnel Services – Salaries	846,567.22	692,645.89	315,925.12	2,176,691.16
<b>Total Personnel Services – Salaries</b>	<b>\$846,567.22</b>	<b>\$692,645.89</b>	<b>\$315,925.12</b>	<b>\$2,176,691.16</b>
<b>200 <u>Personnel Services – Employee Benefits</u></b>				
210 Group Insurance – Contracted Provider	140,691.35	115,111.08	48,763.14	354,387.74
220 Social Security Contributions	62,337.79	51,003.65	23,277.07	157,098.20
230 PSERS Retirement Contributions	327,407.66	267,878.99	31,969.70	739,952.47
250 Unemployment Compensation	201.00	164.45		365.45
280 Other Post-Employment Benefits (OPEB)				4,353.00
291 Other Retirement Plans	8,629.88	7,060.81	2,435.72	33,176.41
<b>Total Personnel Services – Employee Benefits</b>	<b>\$539,267.68</b>	<b>\$441,218.98</b>	<b>\$106,445.63</b>	<b>\$1,289,333.27</b>
<b>300 <u>Purchased Professional and Technical Services</u></b>				
322 Professional Educational Services – Ius				3,421.42
329 Professional Educational Services – Other	851.95	697.05		1,549.00
330 Other Professional Services				461,921.99
390 Other Purchased Professional and Technical Services				32,507.87
<b>Total Purchased Professional and Technical Services</b>	<b>\$851.95</b>	<b>\$697.05</b>		<b>\$499,400.28</b>
<b>400 <u>Purchased Property Services</u></b>				
430 Repairs and Maintenance Services				436.00
440 Rentals	20,927.12	17,122.19		3,147.62
<b>Total Purchased Property Services</b>	<b>\$20,927.12</b>	<b>\$17,122.19</b>		<b>\$3,583.62</b>
<b>500 <u>Other Purchased Services</u></b>				
520 Insurance – General				307,039.00
530 Communications	6,916.56	5,659.01		22,732.23
549 Other Advertising/Public Relations				5,190.26
580 Travel	52.97	43.34		3,176.21
<b>Total Other Purchased Services</b>	<b>\$6,969.53</b>	<b>\$5,702.35</b>		<b>\$338,137.70</b>
<b>600 <u>Supplies</u></b>				
610 General Supplies	74,785.10	61,187.81		258,244.43
650 Supplies & Fees – Technology Related				15,255.80
<b>Total Supplies</b>	<b>\$74,785.10</b>	<b>\$61,187.81</b>		<b>\$273,500.23</b>
<b>700 <u>Property</u></b>				
736 Technology Equipment Lease				248,611.41
<b>Total Property</b>				<b>\$248,611.41</b>
<b>800 <u>Other Objects</u></b>				
810 Dues and Fees	7,521.31	6,153.79		20,510.20
<b>Total Other Objects</b>	<b>\$7,521.31</b>	<b>\$6,153.79</b>		<b>\$20,510.20</b>
<b>Total 2300 Support Services – Administration</b>	<b>\$1,496,889.91</b>	<b>\$1,224,728.06</b>	<b>\$422,370.75</b>	<b>\$4,849,767.87</b>

LEA : 123466403     Pottstown SD

Printed 3/6/2025 12:48:51 PM

General Fund (10)

2310 Board Services	Elementary	Secondary	Federal	Total
100 <u>Personnel Services – Salaries</u>				
100 Personnel Services – Salaries			74,644.50	74,644.50
Total Personnel Services – Salaries			\$74,644.50	\$74,644.50
200 <u>Personnel Services – Employee Benefits</u>				
210 Group Insurance – Contracted Provider			16,608.71	16,608.71
220 Social Security Contributions			5,504.96	5,504.96
230 PSERS Retirement Contributions			7,219.77	7,614.67
291 Other Retirement Plans			25.00	25.00
Total Personnel Services – Employee Benefits			\$29,358.44	\$29,753.34
300 <u>Purchased Professional and Technical Services</u>				
330 Other Professional Services				142,849.88
Total Purchased Professional and Technical Services				\$142,849.88
400 <u>Purchased Property Services</u>				
440 Rentals				(36,025.44)
Total Purchased Property Services				(\$36,025.44)
500 <u>Other Purchased Services</u>				
520 Insurance – General				307,039.00
549 Other Advertising/Public Relations				5,190.26
580 Travel				300.00
Total Other Purchased Services				\$312,529.26
600 <u>Supplies</u>				
610 General Supplies				36,880.07
Total Supplies				\$36,880.07
700 <u>Property</u>				
736 Technology Equipment Lease				248,611.41
Total Property				\$248,611.41
Total 2310 Board Services			\$104,002.94	\$809,243.02

LEA : 123466403     Pottstown SD

Printed 3/6/2025 12:48:51 PM

General Fund (10)

2330 Tax Assessment and Collection Services	<u>Elementary</u>	<u>Secondary</u>	<u>Federal</u>	<u>Total</u>
300 <u>Purchased Professional and Technical Services</u>				
330 Other Professional Services				312,716.51
390 Other Purchased Professional and Technical Services				28,908.87
Total Purchased Professional and Technical Services				\$341,625.38
400 <u>Purchased Property Services</u>				
440 Rentals				1,123.75
Total Purchased Property Services				\$1,123.75
500 <u>Other Purchased Services</u>				
530 Communications				8,734.42
Total Other Purchased Services				\$8,734.42
Total 2330 Tax Assessment and Collection Services				\$351,483.55

LEA : 123466403     Pottstown SD

Printed 3/6/2025 12:48:51 PM

General Fund (10)

2340 Staff Relations and Negotiations Services	<u>Elementary</u>	<u>Secondary</u>	<u>Federal</u>	<u>Total</u>
100 <u>Personnel Services – Salaries</u>				
100 Personnel Services – Salaries				20,672.50
Total Personnel Services – Salaries				\$20,672.50
200 <u>Personnel Services – Employee Benefits</u>				
210 Group Insurance – Contracted Provider				3,758.38
220 Social Security Contributions				1,538.58
230 PSERS Retirement Contributions				7,218.64
Total Personnel Services – Employee Benefits				\$12,515.60
300 <u>Purchased Professional and Technical Services</u>				
330 Other Professional Services				3,800.00
Total Purchased Professional and Technical Services				\$3,800.00
500 <u>Other Purchased Services</u>				
530 Communications				626.08
580 Travel				46.23
Total Other Purchased Services				\$672.31
600 <u>Supplies</u>				
610 General Supplies				58,437.73
650 Supplies & Fees – Technology Related				15,255.80
Total Supplies				\$73,693.53
800 <u>Other Objects</u>				
810 Dues and Fees				4,142.10
Total Other Objects				\$4,142.10
Total 2340 Staff Relations and Negotiations Services				\$115,496.04

LEA : 123466403     Pottstown SD

Printed 3/6/2025 12:48:51 PM

General Fund (10)

2350 Legal and Accounting Services	<u>Elementary</u>	<u>Secondary</u>	<u>Federal</u>	<u>Total</u>
300 <u>Purchased Professional and Technical Services</u>				
322 Professional Educational Services – lus				3,421.42
330 Other Professional Services				2,075.60
Total Purchased Professional and Technical Services				\$5,497.02
600 <u>Supplies</u>				
610 General Supplies				169.99
Total Supplies				\$169.99
Total 2350 Legal and Accounting Services				\$5,667.01



LEA : 123466403     Pottstown SD

Printed 3/6/2025 12:48:51 PM

General Fund (10)				
2360 Office of the Superintendent / Executive Director Services	<u>Elementary</u>	<u>Secondary</u>	<u>Federal</u>	<u>Total</u>
100 <u>Personnel Services – Salaries</u>				
100 Personnel Services – Salaries				265,684.77
Total Personnel Services – Salaries				\$265,684.77
200 <u>Personnel Services – Employee Benefits</u>				
210 Group Insurance – Contracted Provider				40,613.58
220 Social Security Contributions				16,312.91
230 PSERS Retirement Contributions				92,759.63
280 Other Post-Employment Benefits (OPEB)				4,353.00
291 Other Retirement Plans				15,050.00
Total Personnel Services – Employee Benefits				\$169,089.12
300 <u>Purchased Professional and Technical Services</u>				
330 Other Professional Services				480.00
390 Other Purchased Professional and Technical Services				3,599.00
Total Purchased Professional and Technical Services				\$4,079.00
500 <u>Other Purchased Services</u>				
530 Communications	514.35	420.83		935.18
580 Travel				2,683.26
Total Other Purchased Services	\$514.35	\$420.83		\$3,618.44
600 <u>Supplies</u>				
610 General Supplies				26,783.73
Total Supplies				\$26,783.73
800 <u>Other Objects</u>				
810 Dues and Fees				2,398.00
Total Other Objects				\$2,398.00
Total 2360 Office of the Superintendent / Executive Director Services	\$514.35	\$420.83		\$471,653.06

LEA : 123466403     Pottstown SD

Printed 3/6/2025 12:48:51 PM

General Fund (10)

2370 Community Relations Services	<u>Elementary</u>	<u>Secondary</u>	<u>Federal</u>	<u>Total</u>
100 <u>Personnel Services – Salaries</u>				
100 Personnel Services – Salaries				35,195.66
Total Personnel Services – Salaries				\$35,195.66
200 <u>Personnel Services – Employee Benefits</u>				
210 Group Insurance – Contracted Provider				5,450.21
220 Social Security Contributions				2,628.20
230 PSERS Retirement Contributions				12,322.95
Total Personnel Services – Employee Benefits				\$20,401.36
400 <u>Purchased Property Services</u>				
430 Repairs and Maintenance Services				436.00
Total Purchased Property Services				\$436.00
500 <u>Other Purchased Services</u>				
530 Communications				796.16
580 Travel				50.41
Total Other Purchased Services				\$846.57
800 <u>Other Objects</u>				
810 Dues and Fees				295.00
Total Other Objects				\$295.00
Total 2370 Community Relations Services				\$57,174.59

LEA : 123466403     Pottstown SD

Printed 3/6/2025 12:48:51 PM

General Fund (10)

2380 Office of the Principal Services	Elementary	Secondary	Federal	Total
<b>100 <u>Personnel Services – Salaries</u></b>				
100 Personnel Services – Salaries	846,567.22	692,645.89	241,280.62	1,780,493.73
<b>Total Personnel Services – Salaries</b>	<b>\$846,567.22</b>	<b>\$692,645.89</b>	<b>\$241,280.62</b>	<b>\$1,780,493.73</b>
<b>200 <u>Personnel Services – Employee Benefits</u></b>				
210 Group Insurance – Contracted Provider	140,691.35	115,111.08	32,154.43	287,956.86
220 Social Security Contributions	62,337.79	51,003.65	17,772.11	131,113.55
230 PSERS Retirement Contributions	327,407.66	267,878.99	24,749.93	620,036.58
250 Unemployment Compensation	201.00	164.45		365.45
291 Other Retirement Plans	8,629.88	7,060.81	2,410.72	18,101.41
<b>Total Personnel Services – Employee Benefits</b>	<b>\$539,267.68</b>	<b>\$441,218.98</b>	<b>\$77,087.19</b>	<b>\$1,057,573.85</b>
<b>300 <u>Purchased Professional and Technical Services</u></b>				
329 Professional Educational Services – Other	851.95	697.05		1,549.00
<b>Total Purchased Professional and Technical Services</b>	<b>\$851.95</b>	<b>\$697.05</b>		<b>\$1,549.00</b>
<b>400 <u>Purchased Property Services</u></b>				
440 Rentals	20,927.12	17,122.19		38,049.31
<b>Total Purchased Property Services</b>	<b>\$20,927.12</b>	<b>\$17,122.19</b>		<b>\$38,049.31</b>
<b>500 <u>Other Purchased Services</u></b>				
530 Communications	6,402.21	5,238.18		11,640.39
580 Travel	52.97	43.34		96.31
<b>Total Other Purchased Services</b>	<b>\$6,455.18</b>	<b>\$5,281.52</b>		<b>\$11,736.70</b>
<b>600 <u>Supplies</u></b>				
610 General Supplies	74,785.10	61,187.81		135,972.91
<b>Total Supplies</b>	<b>\$74,785.10</b>	<b>\$61,187.81</b>		<b>\$135,972.91</b>
<b>800 <u>Other Objects</u></b>				
810 Dues and Fees	7,521.31	6,153.79		13,675.10
<b>Total Other Objects</b>	<b>\$7,521.31</b>	<b>\$6,153.79</b>		<b>\$13,675.10</b>
<b>Total 2380 Office of the Principal Services</b>	<b>\$1,496,375.56</b>	<b>\$1,224,307.23</b>	<b>\$318,367.81</b>	<b>\$3,039,050.60</b>

LEA : 123466403     Pottstown SD

Printed 3/6/2025 12:48:51 PM

General Fund (10)

		<u>Elementary</u>	<u>Secondary</u>	<u>Federal</u>	<u>Total</u>
<b>2400 Support Services – Pupil Health</b>					
<b>100 <u>Personnel Services – Salaries</u></b>					
100 Personnel Services – Salaries				47,901.01	473,755.54
<b>Total Personnel Services – Salaries</b>				<b>\$47,901.01</b>	<b>\$473,755.54</b>
<b>200 <u>Personnel Services – Employee Benefits</u></b>					
210 Group Insurance – Contracted Provider				19,697.33	104,934.38
220 Social Security Contributions				3,476.57	35,013.48
230 PSERS Retirement Contributions				16,290.68	160,958.60
<b>Total Personnel Services – Employee Benefits</b>				<b>\$39,464.58</b>	<b>\$300,906.46</b>
<b>300 <u>Purchased Professional and Technical Services</u></b>					
322 Professional Educational Services – Ius					1,003.68
330 Other Professional Services				30,019.65	720,534.22
390 Other Purchased Professional and Technical Services					4,140.85
<b>Total Purchased Professional and Technical Services</b>				<b>\$30,019.65</b>	<b>\$725,678.75</b>
<b>500 <u>Other Purchased Services</u></b>					
530 Communications					570.75
580 Travel					605.36
<b>Total Other Purchased Services</b>					<b>\$1,176.11</b>
<b>600 <u>Supplies</u></b>					
610 General Supplies				1,710.37	59,551.25
640 Books and Periodicals					496.65
<b>Total Supplies</b>				<b>\$1,710.37</b>	<b>\$60,047.90</b>
<b>700 <u>Property</u></b>					
790 Other Property					23,485.50
<b>Total Property</b>					<b>\$23,485.50</b>
<b>800 <u>Other Objects</u></b>					
810 Dues and Fees					260.00
890 Miscellaneous Expenditures					2,324.00
<b>Total Other Objects</b>					<b>\$2,584.00</b>
<b>Total 2400 Support Services – Pupil Health</b>				<b>\$119,095.61</b>	<b>\$1,587,634.26</b>

LEA : 123466403     Pottstown SD

Printed 3/6/2025 12:48:51 PM

General Fund (10)

2410 Supervision of Health Services	<u>Elementary</u>	<u>Secondary</u>	<u>Federal</u>	<u>Total</u>
500 <u>Other Purchased Services</u>				
580 Travel				168.72
Total Other Purchased Services				\$168.72
600 <u>Supplies</u>				
610 General Supplies				46,090.00
Total Supplies				\$46,090.00
800 <u>Other Objects</u>				
810 Dues and Fees				260.00
Total Other Objects				\$260.00
Total 2410 Supervision of Health Services				\$46,518.72

LEA : 123466403     Pottstown SD

Printed 3/6/2025 12:48:51 PM

General Fund (10)

2411 Supervision of Health Services – Head of Component	<u>Elementary</u>	<u>Secondary</u>	<u>Federal</u>	<u>Total</u>
500 <u>Other Purchased Services</u>				
580 Travel				168.72
Total Other Purchased Services				\$168.72
600 <u>Supplies</u>				
610 General Supplies				46,090.00
Total Supplies				\$46,090.00
800 <u>Other Objects</u>				
810 Dues and Fees				260.00
Total Other Objects				\$260.00
Total 2411 Supervision of Health Services – Head of Component				\$46,518.72

LEA : 123466403     Pottstown SD

Printed 3/6/2025 12:48:51 PM

General Fund (10)

2420 Medical Services

	<u>Elementary</u>	<u>Secondary</u>	<u>Federal</u>	<u>Total</u>
<b>100 <u>Personnel Services – Salaries</u></b>				
100 Personnel Services – Salaries			47,901.01	254,288.11
<b>Total Personnel Services – Salaries</b>			<b>\$47,901.01</b>	<b>\$254,288.11</b>
<b>200 <u>Personnel Services – Employee Benefits</u></b>				
210 Group Insurance – Contracted Provider			19,697.33	77,317.03
220 Social Security Contributions			3,476.57	18,136.17
230 PSERS Retirement Contributions			16,290.68	86,403.39
<b>Total Personnel Services – Employee Benefits</b>			<b>\$39,464.58</b>	<b>\$181,856.59</b>
<b>300 <u>Purchased Professional and Technical Services</u></b>				
322 Professional Educational Services – Ius				1,003.68
330 Other Professional Services			3,135.00	228,633.72
390 Other Purchased Professional and Technical Services				4,140.85
<b>Total Purchased Professional and Technical Services</b>			<b>\$3,135.00</b>	<b>\$233,778.25</b>
<b>500 <u>Other Purchased Services</u></b>				
530 Communications				570.75
580 Travel				436.64
<b>Total Other Purchased Services</b>				<b>\$1,007.39</b>
<b>600 <u>Supplies</u></b>				
610 General Supplies				11,750.88
640 Books and Periodicals				496.65
<b>Total Supplies</b>				<b>\$12,247.53</b>
<b>Total 2420 Medical Services</b>			<b>\$90,500.59</b>	<b>\$683,177.87</b>

LEA : 123466403     Pottstown SD

Printed 3/6/2025 12:48:51 PM

General Fund (10)

2440 Nursing Services

	<u>Elementary</u>	<u>Secondary</u>	<u>Federal</u>	<u>Total</u>
<b>100 <u>Personnel Services – Salaries</u></b>				
100 Personnel Services – Salaries				219,467.43
<b>Total Personnel Services – Salaries</b>				<b>\$219,467.43</b>
<b>200 <u>Personnel Services – Employee Benefits</u></b>				
210 Group Insurance – Contracted Provider				27,617.35
220 Social Security Contributions				16,877.31
230 PSERS Retirement Contributions				74,555.21
<b>Total Personnel Services – Employee Benefits</b>				<b>\$119,049.87</b>
<b>300 <u>Purchased Professional and Technical Services</u></b>				
330 Other Professional Services			26,884.65	491,900.50
<b>Total Purchased Professional and Technical Services</b>			<b>\$26,884.65</b>	<b>\$491,900.50</b>
<b>600 <u>Supplies</u></b>				
610 General Supplies			1,710.37	1,710.37
<b>Total Supplies</b>			<b>\$1,710.37</b>	<b>\$1,710.37</b>
<b>700 <u>Property</u></b>				
790 Other Property				23,485.50
<b>Total Property</b>				<b>\$23,485.50</b>
<b>Total 2440 Nursing Services</b>			<b>\$28,595.02</b>	<b>\$855,613.67</b>



Page 105

LEA : 123466403     Pottstown SD

Printed 3/6/2025 12:48:51 PM

General Fund (10)

2500 Support Services – Business	Elementary	Secondary	Federal	Total
100 <u>Personnel Services – Salaries</u>				
100 Personnel Services – Salaries			39,762.69	564,816.45
Total Personnel Services – Salaries			\$39,762.69	\$564,816.45
200 <u>Personnel Services – Employee Benefits</u>				
210 Group Insurance – Contracted Provider			8,786.90	112,124.72
220 Social Security Contributions			2,957.87	41,262.74
230 PSERS Retirement Contributions			4,127.56	189,315.02
291 Other Retirement Plans				29,730.00
Total Personnel Services – Employee Benefits			\$15,872.33	\$372,432.48
300 <u>Purchased Professional and Technical Services</u>				
329 Professional Educational Services – Other				30,641.20
330 Other Professional Services				39,690.21
390 Other Purchased Professional and Technical Services				44,854.26
Total Purchased Professional and Technical Services				\$115,185.67
400 <u>Purchased Property Services</u>				
430 Repairs and Maintenance Services				175.00
440 Rentals				17,021.91
Total Purchased Property Services				\$17,196.91
500 <u>Other Purchased Services</u>				
520 Insurance – General				4,919.80
530 Communications				21,768.61
580 Travel				1,791.57
Total Other Purchased Services				\$28,479.98
600 <u>Supplies</u>				
610 General Supplies				25,209.55
640 Books and Periodicals				20,018.04
650 Supplies & Fees – Technology Related				16,323.12
Total Supplies				\$61,550.71
800 <u>Other Objects</u>				
810 Dues and Fees				7,454.23
830 Interest				7,584.28
Total Other Objects				\$15,038.51
Total 2500 Support Services – Business			\$55,635.02	\$1,174,700.71

LEA : 123466403     Pottstown SD

Printed 3/6/2025 12:48:51 PM

General Fund (10)

2510 Fiscal Services

	<u>Elementary</u>	<u>Secondary</u>	<u>Federal</u>	<u>Total</u>
<b>100 <u>Personnel Services – Salaries</u></b>				
100 Personnel Services – Salaries			39,762.69	564,816.45
<b>Total Personnel Services – Salaries</b>			<b>\$39,762.69</b>	<b>\$564,816.45</b>
<b>200 <u>Personnel Services – Employee Benefits</u></b>				
210 Group Insurance – Contracted Provider			8,786.90	112,124.72
220 Social Security Contributions			2,957.87	41,262.74
230 PSERS Retirement Contributions			4,127.56	189,315.02
291 Other Retirement Plans				29,730.00
<b>Total Personnel Services – Employee Benefits</b>			<b>\$15,872.33</b>	<b>\$372,432.48</b>
<b>300 <u>Purchased Professional and Technical Services</u></b>				
329 Professional Educational Services – Other				314.36
330 Other Professional Services				39,690.21
390 Other Purchased Professional and Technical Services				44,854.26
<b>Total Purchased Professional and Technical Services</b>				<b>\$84,858.83</b>
<b>400 <u>Purchased Property Services</u></b>				
440 Rentals				3,550.08
<b>Total Purchased Property Services</b>				<b>\$3,550.08</b>
<b>500 <u>Other Purchased Services</u></b>				
520 Insurance – General				4,919.80
530 Communications				21,768.61
580 Travel				1,791.57
<b>Total Other Purchased Services</b>				<b>\$28,479.98</b>
<b>600 <u>Supplies</u></b>				
610 General Supplies				7,480.15
640 Books and Periodicals				20,018.04
650 Supplies & Fees – Technology Related				2,927.60
<b>Total Supplies</b>				<b>\$30,425.79</b>
<b>800 <u>Other Objects</u></b>				
810 Dues and Fees				7,454.23
830 Interest				7,584.28
<b>Total Other Objects</b>				<b>\$15,038.51</b>
<b>Total 2510 Fiscal Services</b>			<b>\$55,635.02</b>	<b>\$1,099,602.12</b>

LEA : 123466403     Pottstown SD

Printed 3/6/2025 12:48:51 PM

General Fund (10)				
2511 Supervision of Fiscal Services - Head of Component	<u>Elementary</u>	<u>Secondary</u>	<u>Federal</u>	<u>Total</u>
100 <u>Personnel Services – Salaries</u>				
100 Personnel Services – Salaries				226,185.93
Total Personnel Services – Salaries				\$226,185.93
200 <u>Personnel Services – Employee Benefits</u>				
210 Group Insurance – Contracted Provider				25,322.23
220 Social Security Contributions				16,240.48
230 PSERS Retirement Contributions				77,316.27
291 Other Retirement Plans				29,730.00
Total Personnel Services – Employee Benefits				\$148,608.98
300 <u>Purchased Professional and Technical Services</u>				
329 Professional Educational Services – Other				190.00
330 Other Professional Services				39,690.21
390 Other Purchased Professional and Technical Services				44,607.34
Total Purchased Professional and Technical Services				\$84,487.55
400 <u>Purchased Property Services</u>				
440 Rentals				3,550.08
Total Purchased Property Services				\$3,550.08
500 <u>Other Purchased Services</u>				
520 Insurance – General				426.30
530 Communications				21,768.61
580 Travel				1,791.57
Total Other Purchased Services				\$23,986.48
600 <u>Supplies</u>				
610 General Supplies				6,772.11
640 Books and Periodicals				20,018.04
650 Supplies & Fees – Technology Related				2,927.60
Total Supplies				\$29,717.75
800 <u>Other Objects</u>				
810 Dues and Fees				7,454.23
830 Interest				7,584.28
Total Other Objects				\$15,038.51
Total 2511 Supervision of Fiscal Services - Head of Component				\$531,575.28

LEA : 123466403     Pottstown SD

Printed 3/6/2025 12:48:51 PM

General Fund (10)

2512 Budgeting Services	<u>Elementary</u>	<u>Secondary</u>	<u>Federal</u>	<u>Total</u>
100 <u>Personnel Services – Salaries</u>				
100 Personnel Services – Salaries				110,651.07
Total Personnel Services – Salaries				\$110,651.07
200 <u>Personnel Services – Employee Benefits</u>				
210 Group Insurance – Contracted Provider				22,162.39
220 Social Security Contributions				8,136.79
230 PSERS Retirement Contributions				38,870.98
Total Personnel Services – Employee Benefits				\$69,170.16
300 <u>Purchased Professional and Technical Services</u>				
390 Other Purchased Professional and Technical Services				246.92
Total Purchased Professional and Technical Services				\$246.92
Total 2512 Budgeting Services				\$180,068.15

LEA : 123466403     Pottstown SD

Printed 3/6/2025 12:48:51 PM

General Fund (10)

2513 Receiving and Disbursing Funds Services	<u>Elementary</u>	<u>Secondary</u>	<u>Federal</u>	<u>Total</u>
100 <u>Personnel Services – Salaries</u>				
100 Personnel Services – Salaries				22,746.38
Total Personnel Services – Salaries				\$22,746.38
200 <u>Personnel Services – Employee Benefits</u>				
210 Group Insurance – Contracted Provider				9,980.47
220 Social Security Contributions				1,672.68
230 PSERS Retirement Contributions				7,942.61
Total Personnel Services – Employee Benefits				\$19,595.76
Total 2513 Receiving and Disbursing Funds Services				\$42,342.14

LEA : 123466403     Pottstown SD

Printed 3/6/2025 12:48:51 PM

General Fund (10)

2514 Payroll Services

	<u>Elementary</u>	<u>Secondary</u>	<u>Federal</u>	<u>Total</u>
<b>100 <u>Personnel Services – Salaries</u></b>				
100 Personnel Services – Salaries			4,461.63	113,022.23
<b>Total Personnel Services – Salaries</b>			<b>\$4,461.63</b>	<b>\$113,022.23</b>
<b>200 <u>Personnel Services – Employee Benefits</u></b>				
210 Group Insurance – Contracted Provider			920.79	36,383.49
220 Social Security Contributions			334.89	8,336.17
230 PSERS Retirement Contributions			574.52	39,365.24
<b>Total Personnel Services – Employee Benefits</b>			<b>\$1,830.20</b>	<b>\$84,084.90</b>
<b>600 <u>Supplies</u></b>				
610 General Supplies				273.05
<b>Total Supplies</b>				<b>\$273.05</b>
<b>Total 2514 Payroll Services</b>			<b>\$6,291.83</b>	<b>\$197,380.18</b>

LEA : 123466403     Pottstown SD

Printed 3/6/2025 12:48:51 PM

General Fund (10)

2515 Financial Accounting Services	<u>Elementary</u>	<u>Secondary</u>	<u>Federal</u>	<u>Total</u>
100 <u>Personnel Services – Salaries</u>				
100 Personnel Services – Salaries			35,301.06	92,210.84
Total Personnel Services – Salaries			\$35,301.06	\$92,210.84
200 <u>Personnel Services – Employee Benefits</u>				
210 Group Insurance – Contracted Provider			7,866.11	18,276.14
220 Social Security Contributions			2,622.98	6,876.62
230 PSERS Retirement Contributions			3,553.04	25,819.92
Total Personnel Services – Employee Benefits			\$14,042.13	\$50,972.68
300 <u>Purchased Professional and Technical Services</u>				
329 Professional Educational Services – Other				124.36
Total Purchased Professional and Technical Services				\$124.36
500 <u>Other Purchased Services</u>				
520 Insurance – General				4,493.50
Total Other Purchased Services				\$4,493.50
600 <u>Supplies</u>				
610 General Supplies				434.99
Total Supplies				\$434.99
Total 2515 Financial Accounting Services			\$49,343.19	\$148,236.37



LEA : 123466403     Pottstown SD

Printed 3/6/2025 12:48:51 PM

General Fund (10)

2520 Purchasing Services

<u>Elementary</u>	<u>Secondary</u>	<u>Federal</u>	<u>Total</u>
-------------------	------------------	----------------	--------------

600 Supplies

610 General Supplies				1,275.42
----------------------	--	--	--	----------

Total Supplies				\$1,275.42
----------------	--	--	--	------------

Total 2520 Purchasing Services				\$1,275.42
--------------------------------	--	--	--	------------

LEA : 123466403     Pottstown SD

Printed 3/6/2025 12:48:51 PM

General Fund (10)

2530 Warehousing and Distributing Services	<u>Elementary</u>	<u>Secondary</u>	<u>Federal</u>	<u>Total</u>
300 <u>Purchased Professional and Technical Services</u>				
329 Professional Educational Services – Other				30,326.84
Total Purchased Professional and Technical Services				\$30,326.84
Total 2530 Warehousing and Distributing Services				\$30,326.84

LEA : 123466403     Pottstown SD

Printed 3/6/2025 12:48:51 PM

General Fund (10)

2540 Printing, Publishing and Duplicating Services

Elementary                      Secondary                      Federal                      Total

400 Purchased Property Services

430 Repairs and Maintenance Services 175.00

440 Rentals 13,471.83

**Total Purchased Property Services \$13,646.83**

600 Supplies

610 General Supplies 16,453.98

650 Supplies & Fees – Technology Related 13,395.52

**Total Supplies \$29,849.50**

**Total 2540 Printing, Publishing and Duplicating Services \$43,496.33**

LEA : 123466403     Pottstown SD

Printed 3/6/2025 12:48:51 PM

General Fund (10)

2600 Operation and Maintenance of Plant Services	Elementary	Secondary	Federal	Total
<b>100 <u>Personnel Services – Salaries</u></b>				
100 Personnel Services – Salaries			88,014.52	2,259,328.64
<b>Total Personnel Services – Salaries</b>			<b>\$88,014.52</b>	<b>\$2,259,328.64</b>
<b>200 <u>Personnel Services – Employee Benefits</u></b>				
210 Group Insurance – Contracted Provider			16,954.88	335,656.99
220 Social Security Contributions			6,570.75	169,007.60
230 PSERS Retirement Contributions			8,853.26	749,626.63
291 Other Retirement Plans			107.55	322.65
<b>Total Personnel Services – Employee Benefits</b>			<b>\$32,486.44</b>	<b>\$1,254,613.87</b>
<b>300 <u>Purchased Professional and Technical Services</u></b>				
329 Professional Educational Services – Other			34,752.04	34,752.04
330 Other Professional Services				99,153.49
350 Security / Safety Services			97,312.30	864,929.25
390 Other Purchased Professional and Technical Services				151,180.38
<b>Total Purchased Professional and Technical Services</b>			<b>\$132,064.34</b>	<b>\$1,150,015.16</b>
<b>400 <u>Purchased Property Services</u></b>				
410 Cleaning Services				261,462.36
420 Utility Services				94,484.42
430 Repairs and Maintenance Services				763,656.22
440 Rentals				1,397.91
460 Extermination Services				18,654.70
<b>Total Purchased Property Services</b>				<b>\$1,139,655.61</b>
<b>500 <u>Other Purchased Services</u></b>				
523 General Property and Liability Insurance				41,927.00
530 Communications				135,029.05
580 Travel				984.93
<b>Total Other Purchased Services</b>				<b>\$177,940.98</b>
<b>600 <u>Supplies</u></b>				
610 General Supplies	386,116.05	315,913.14		702,029.19
620 Energy				631,277.57
650 Supplies & Fees – Technology Related				39,147.55
<b>Total Supplies</b>	<b>\$386,116.05</b>	<b>\$315,913.14</b>		<b>\$1,372,454.31</b>
<b>700 <u>Property</u></b>				
752 Capital Equipment – Original and Additional				209,899.94
762 Capitalized Equipment - Replacement				269,660.50
<b>Total Property</b>				<b>\$479,560.44</b>
<b>800 <u>Other Objects</u></b>				
810 Dues and Fees				210.50
<b>Total Other Objects</b>				<b>\$210.50</b>
<b>Total 2600 Operation and Maintenance of Plant Services</b>	<b>\$386,116.05</b>	<b>\$315,913.14</b>	<b>\$252,565.30</b>	<b>\$7,833,779.51</b>

LEA : 123466403     Pottstown SD

Printed 3/6/2025 12:48:51 PM

General Fund (10)

2610 Supervision of Operation and Maintenance of Plant Services	<u>Elementary</u>	<u>Secondary</u>	<u>Federal</u>	<u>Total</u>
100 <u>Personnel Services – Salaries</u>				
100 Personnel Services – Salaries				138,765.15
Total Personnel Services – Salaries				\$138,765.15
200 <u>Personnel Services – Employee Benefits</u>				
210 Group Insurance – Contracted Provider				22,399.31
220 Social Security Contributions				12,688.61
230 PSERS Retirement Contributions				56,682.23
Total Personnel Services – Employee Benefits				\$91,770.15
300 <u>Purchased Professional and Technical Services</u>				
330 Other Professional Services				98,753.53
390 Other Purchased Professional and Technical Services				1,271.00
Total Purchased Professional and Technical Services				\$100,024.53
500 <u>Other Purchased Services</u>				
580 Travel				949.13
Total Other Purchased Services				\$949.13
600 <u>Supplies</u>				
610 General Supplies	517.36	423.29		940.65
Total Supplies	\$517.36	\$423.29		\$940.65
Total 2610 Supervision of Operation and Maintenance of Plant Services	\$517.36	\$423.29		\$332,449.61

LEA : 123466403     Pottstown SD

Printed 3/6/2025 12:48:51 PM

General Fund (10)				
2611 Supervision of Operation and Maintenance of Plant Services – Head of Component	<u>Elementary</u>	<u>Secondary</u>	<u>Federal</u>	<u>Total</u>
100 <u>Personnel Services – Salaries</u>				
100 Personnel Services – Salaries				138,765.15
Total Personnel Services – Salaries				\$138,765.15
200 <u>Personnel Services – Employee Benefits</u>				
210 Group Insurance – Contracted Provider				22,399.31
220 Social Security Contributions				12,688.61
230 PSERS Retirement Contributions				56,682.23
Total Personnel Services – Employee Benefits				\$91,770.15
300 <u>Purchased Professional and Technical Services</u>				
330 Other Professional Services				98,753.53
390 Other Purchased Professional and Technical Services				1,271.00
Total Purchased Professional and Technical Services				\$100,024.53
500 <u>Other Purchased Services</u>				
580 Travel				949.13
Total Other Purchased Services				\$949.13
600 <u>Supplies</u>				
610 General Supplies	517.36	423.29		940.65
Total Supplies	\$517.36	\$423.29		\$940.65
Total 2611 Supervision of Operation and Maintenance of Plant Services – Head of Component	\$517.36	\$423.29		\$332,449.61

LEA : 123466403     Pottstown SD

Printed 3/6/2025 12:48:51 PM

General Fund (10)

2620 Operation of Buildings Services	Elementary	Secondary	Federal	Total
100 <u>Personnel Services – Salaries</u>				
100 Personnel Services – Salaries			88,014.52	1,801,273.58
Total Personnel Services – Salaries			\$88,014.52	\$1,801,273.58
200 <u>Personnel Services – Employee Benefits</u>				
210 Group Insurance – Contracted Provider			16,954.88	249,885.22
220 Social Security Contributions			6,570.75	132,585.47
230 PSERS Retirement Contributions			8,853.26	586,146.91
291 Other Retirement Plans			107.55	322.65
Total Personnel Services – Employee Benefits			\$32,486.44	\$968,940.25
300 <u>Purchased Professional and Technical Services</u>				
330 Other Professional Services				399.96
350 Security / Safety Services				49,719.48
390 Other Purchased Professional and Technical Services				149,909.38
Total Purchased Professional and Technical Services				\$200,028.82
400 <u>Purchased Property Services</u>				
410 Cleaning Services				73,892.91
420 Utility Services				94,484.42
430 Repairs and Maintenance Services				753,379.98
440 Rentals				1,303.91
460 Extermination Services				18,654.70
Total Purchased Property Services				\$941,715.92
500 <u>Other Purchased Services</u>				
523 General Property and Liability Insurance				41,927.00
530 Communications				134,198.55
580 Travel				35.80
Total Other Purchased Services				\$176,161.35
600 <u>Supplies</u>				
610 General Supplies	378,448.34	309,639.56		688,087.90
620 Energy				621,773.63
650 Supplies & Fees – Technology Related				23,537.45
Total Supplies	\$378,448.34	\$309,639.56		\$1,333,398.98
700 <u>Property</u>				
752 Capital Equipment – Original and Additional				156,402.28
762 Capitalized Equipment - Replacement				269,660.50
Total Property				\$426,062.78
800 <u>Other Objects</u>				
810 Dues and Fees				125.00
Total Other Objects				\$125.00
Total 2620 Operation of Buildings Services	\$378,448.34	\$309,639.56	\$120,500.96	\$5,847,706.68

LEA : 123466403     Pottstown SD

Printed 3/6/2025 12:48:51 PM

General Fund (10)

2630 Care and Upkeep of Grounds Services	<u>Elementary</u>	<u>Secondary</u>	<u>Federal</u>	<u>Total</u>
100 <u>Personnel Services – Salaries</u>				
100 Personnel Services – Salaries				116,225.39
Total Personnel Services – Salaries				\$116,225.39
200 <u>Personnel Services – Employee Benefits</u>				
210 Group Insurance – Contracted Provider				29,973.04
220 Social Security Contributions				8,548.18
230 PSERS Retirement Contributions				40,483.79
Total Personnel Services – Employee Benefits				\$79,005.01
400 <u>Purchased Property Services</u>				
410 Cleaning Services				187,569.45
440 Rentals				94.00
Total Purchased Property Services				\$187,663.45
600 <u>Supplies</u>				
610 General Supplies	3,644.91	2,982.20		6,627.11
Total Supplies	\$3,644.91	\$2,982.20		\$6,627.11
700 <u>Property</u>				
752 Capital Equipment – Original and Additional				53,497.66
Total Property				\$53,497.66
Total 2630 Care and Upkeep of Grounds Services	\$3,644.91	\$2,982.20		\$443,018.62



LEA : 123466403     Pottstown SD

Printed 3/6/2025 12:48:51 PM

General Fund (10)

2640 Care and Upkeep of Equipment Services	<u>Elementary</u>	<u>Secondary</u>	<u>Federal</u>	<u>Total</u>
600 <u>Supplies</u>				
610 General Supplies	748.95	612.78		1,361.73
Total Supplies	\$748.95	\$612.78		\$1,361.73
Total 2640 Care and Upkeep of Equipment Services	\$748.95	\$612.78		\$1,361.73

LEA : 123466403     Pottstown SD

Printed 3/6/2025 12:48:51 PM

General Fund (10)

2650 Vehicle Operation and Maintenance Services (Other Than Student Transportation Vehicles)	<u>Elementary</u>	<u>Secondary</u>	<u>Federal</u>	<u>Total</u>
400 <u>Purchased Property Services</u>				
430 Repairs and Maintenance Services				10,276.24
Total Purchased Property Services				\$10,276.24
600 <u>Supplies</u>				
610 General Supplies	186.89	152.91		339.80
620 Energy				9,503.94
Total Supplies	\$186.89	\$152.91		\$9,843.74
800 <u>Other Objects</u>				
810 Dues and Fees				85.50
Total Other Objects				\$85.50
Total 2650 Vehicle Operation and Maintenance Services (Other Than Student Transportation Vehicles)	\$186.89	\$152.91		\$20,205.48

LEA : 123466403     Pottstown SD

Printed 3/6/2025 12:48:51 PM

General Fund (10)

2660 Safety and Security Services	<u>Elementary</u>	<u>Secondary</u>	<u>Federal</u>	<u>Total</u>
100 <u>Personnel Services – Salaries</u>				
100 Personnel Services – Salaries				203,064.52
Total Personnel Services – Salaries				\$203,064.52
200 <u>Personnel Services – Employee Benefits</u>				
210 Group Insurance – Contracted Provider				33,399.42
220 Social Security Contributions				15,185.34
230 PSERS Retirement Contributions				66,313.70
Total Personnel Services – Employee Benefits				\$114,898.46
300 <u>Purchased Professional and Technical Services</u>				
329 Professional Educational Services – Other			34,752.04	34,752.04
350 Security / Safety Services			97,312.30	815,209.77
Total Purchased Professional and Technical Services			\$132,064.34	\$849,961.81
500 <u>Other Purchased Services</u>				
530 Communications				830.50
Total Other Purchased Services				\$830.50
600 <u>Supplies</u>				
610 General Supplies	2,569.60	2,102.40		4,672.00
650 Supplies & Fees – Technology Related				15,610.10
Total Supplies	\$2,569.60	\$2,102.40		\$20,282.10
Total 2660 Safety and Security Services	\$2,569.60	\$2,102.40	\$132,064.34	\$1,189,037.39

LEA : 123466403     Pottstown SD

Printed 3/6/2025 12:48:51 PM

General Fund (10)

2700 Student Transportation Services				
	Elementary	Secondary	Federal	Total
300 <u>Purchased Professional and Technical Services</u>				
329 Professional Educational Services – Other				90,301.80
Total Purchased Professional and Technical Services				\$90,301.80
400 <u>Purchased Property Services</u>				
430 Repairs and Maintenance Services				5,381.90
Total Purchased Property Services				\$5,381.90
500 <u>Other Purchased Services</u>				
513 Contracted Carriers			225,992.34	2,698,310.62
516 Student Transportation Services From the IU				778,068.72
522 Automotive Liability Insurance				11,445.00
580 Travel				76.20
Total Other Purchased Services			\$225,992.34	\$3,487,900.54
600 <u>Supplies</u>				
610 General Supplies				12,700.00
650 Supplies & Fees – Technology Related				11,580.00
Total Supplies				\$24,280.00
Total 2700 Student Transportation Services			\$225,992.34	\$3,607,864.24

LEA : 123466403     Pottstown SD

Printed 3/6/2025 12:48:51 PM

General Fund (10)

2710 Supervision of Student Transportation Services	<u>Elementary</u>	<u>Secondary</u>	<u>Federal</u>	<u>Total</u>
300 <u>Purchased Professional and Technical Services</u>				
329 Professional Educational Services – Other				90,301.80
Total Purchased Professional and Technical Services				\$90,301.80
500 <u>Other Purchased Services</u>				
513 Contracted Carriers			225,992.34	2,517,876.83
516 Student Transportation Services From the IU				778,068.72
522 Automotive Liability Insurance				11,445.00
580 Travel				76.20
Total Other Purchased Services			\$225,992.34	\$3,307,466.75
600 <u>Supplies</u>				
610 General Supplies				12,700.00
650 Supplies & Fees – Technology Related				11,580.00
Total Supplies				\$24,280.00
Total 2710 Supervision of Student Transportation Services			\$225,992.34	\$3,422,048.55

LEA : 123466403     Pottstown SD

Printed 3/6/2025 12:48:51 PM

General Fund (10)

2711 Supervision of Student Transportation Services – Head of Component	<u>Elementary</u>	<u>Secondary</u>	<u>Federal</u>	<u>Total</u>
300 <u>Purchased Professional and Technical Services</u>				
329 Professional Educational Services – Other				90,301.80
Total Purchased Professional and Technical Services				\$90,301.80
500 <u>Other Purchased Services</u>				
513 Contracted Carriers			225,992.34	2,517,876.83
516 Student Transportation Services From the IU				778,068.72
522 Automotive Liability Insurance				11,445.00
580 Travel				76.20
Total Other Purchased Services			\$225,992.34	\$3,307,466.75
600 <u>Supplies</u>				
610 General Supplies				12,700.00
650 Supplies & Fees – Technology Related				11,580.00
Total Supplies				\$24,280.00
Total 2711 Supervision of Student Transportation Services – Head of Component			\$225,992.34	\$3,422,048.55

LEA : 123466403     Pottstown SD

Printed 3/6/2025 12:48:51 PM

General Fund (10)

2740 Vehicle Servicing and Maintenance Services	<u>Elementary</u>	<u>Secondary</u>	<u>Federal</u>	<u>Total</u>
400 <u>Purchased Property Services</u>				
430 Repairs and Maintenance Services				5,381.90
Total Purchased Property Services				\$5,381.90
Total 2740 Vehicle Servicing and Maintenance Services				\$5,381.90

LEA : 123466403     Pottstown SD

Printed 3/6/2025 12:48:51 PM

General Fund (10)

2750 Nonpublic Transportation	<u>Elementary</u>	<u>Secondary</u>	<u>Federal</u>	<u>Total</u>
500 <u>Other Purchased Services</u>				
513 Contracted Carriers				180,433.79
Total Other Purchased Services				\$180,433.79
Total 2750 Nonpublic Transportation				\$180,433.79



LEA : 123466403     Pottstown SD

Printed 3/6/2025 12:48:51 PM

General Fund (10)

2800 Support Services – Central	<u>Elementary</u>	<u>Secondary</u>	<u>Federal</u>	<u>Total</u>
100 <u>Personnel Services – Salaries</u>				
100 Personnel Services – Salaries				314,768.42
Total Personnel Services – Salaries				\$314,768.42
200 <u>Personnel Services – Employee Benefits</u>				
210 Group Insurance – Contracted Provider				70,820.06
220 Social Security Contributions				23,341.71
230 PSERS Retirement Contributions				107,003.00
291 Other Retirement Plans				11,551.90
Total Personnel Services – Employee Benefits				\$212,716.67
300 <u>Purchased Professional and Technical Services</u>				
322 Professional Educational Services – Ius				25,200.00
329 Professional Educational Services – Other				1,560.00
330 Other Professional Services				39,000.00
390 Other Purchased Professional and Technical Services				904.00
Total Purchased Professional and Technical Services				\$66,664.00
500 <u>Other Purchased Services</u>				
530 Communications				770.82
580 Travel				376.30
Total Other Purchased Services				\$1,147.12
600 <u>Supplies</u>				
610 General Supplies				28.08
650 Supplies & Fees – Technology Related				149,524.12
Total Supplies				\$149,552.20
Total 2800 Support Services – Central				\$744,848.41

LEA : 123466403     Pottstown SD

Printed 3/6/2025 12:48:51 PM

General Fund (10)

2830 Staff Services

	<u>Elementary</u>	<u>Secondary</u>	<u>Federal</u>	<u>Total</u>
100 <u>Personnel Services – Salaries</u>				
100 Personnel Services – Salaries				253,449.29
Total Personnel Services – Salaries				\$253,449.29
200 <u>Personnel Services – Employee Benefits</u>				
210 Group Insurance – Contracted Provider				50,001.90
220 Social Security Contributions				18,815.32
230 PSERS Retirement Contributions				86,172.61
291 Other Retirement Plans				1,623.00
Total Personnel Services – Employee Benefits				\$156,612.83
300 <u>Purchased Professional and Technical Services</u>				
329 Professional Educational Services – Other				1,560.00
Total Purchased Professional and Technical Services				\$1,560.00
500 <u>Other Purchased Services</u>				
530 Communications				770.82
Total Other Purchased Services				\$770.82
600 <u>Supplies</u>				
610 General Supplies				28.08
Total Supplies				\$28.08
Total 2830 Staff Services				\$412,421.02

LEA : 123466403     Pottstown SD

Printed 3/6/2025 12:48:51 PM

General Fund (10)

2831 Supervision of Staff Services	<u>Elementary</u>	<u>Secondary</u>	<u>Federal</u>	<u>Total</u>
100 <u>Personnel Services – Salaries</u>				
100 Personnel Services – Salaries				253,449.29
Total Personnel Services – Salaries				\$253,449.29
200 <u>Personnel Services – Employee Benefits</u>				
210 Group Insurance – Contracted Provider				50,001.90
220 Social Security Contributions				18,815.32
230 PSERS Retirement Contributions				86,172.61
291 Other Retirement Plans				1,623.00
Total Personnel Services – Employee Benefits				\$156,612.83
300 <u>Purchased Professional and Technical Services</u>				
329 Professional Educational Services – Other				1,560.00
Total Purchased Professional and Technical Services				\$1,560.00
500 <u>Other Purchased Services</u>				
530 Communications				770.82
Total Other Purchased Services				\$770.82
600 <u>Supplies</u>				
610 General Supplies				28.08
Total Supplies				\$28.08
Total 2831 Supervision of Staff Services				\$412,421.02

LEA : 123466403     Pottstown SD

Printed 3/6/2025 12:48:51 PM

General Fund (10)

2840 Data Processing Services	<u>Elementary</u>	<u>Secondary</u>	<u>Federal</u>	<u>Total</u>
100 <u>Personnel Services – Salaries</u>				
100 Personnel Services – Salaries				61,319.13
Total Personnel Services – Salaries				\$61,319.13
200 <u>Personnel Services – Employee Benefits</u>				
210 Group Insurance – Contracted Provider				20,818.16
220 Social Security Contributions				4,526.39
230 PSERS Retirement Contributions				20,830.39
291 Other Retirement Plans				9,928.90
Total Personnel Services – Employee Benefits				\$56,103.84
300 <u>Purchased Professional and Technical Services</u>				
322 Professional Educational Services – Ius				25,200.00
330 Other Professional Services				39,000.00
390 Other Purchased Professional and Technical Services				904.00
Total Purchased Professional and Technical Services				\$65,104.00
500 <u>Other Purchased Services</u>				
580 Travel				376.30
Total Other Purchased Services				\$376.30
600 <u>Supplies</u>				
650 Supplies & Fees – Technology Related				149,524.12
Total Supplies				\$149,524.12
Total 2840 Data Processing Services				\$332,427.39

LEA : 123466403     Pottstown SD

Printed 3/6/2025 12:48:51 PM

General Fund (10)

2900 Other Support Services	<u>Elementary</u>	<u>Secondary</u>	<u>Federal</u>	<u>Total</u>
500 <u>Other Purchased Services</u>				
595 IU Payments By Withholding				16,224.71
Total Other Purchased Services				\$16,224.71
Total 2900 Other Support Services				\$16,224.71

LEA : 123466403     Pottstown SD

Printed 3/6/2025 12:48:51 PM

General Fund (10)

2910 Support Services Not Listed Elsewhere In the 2000 Series

<u>Elementary</u>	<u>Secondary</u>	<u>Federal</u>	<u>Total</u>
-------------------	------------------	----------------	--------------

500 Other Purchased Services

595 IU Payments By Withholding			16,224.71
--------------------------------	--	--	-----------

<b>Total Other Purchased Services</b>			<b>\$16,224.71</b>
---------------------------------------	--	--	--------------------

<b>Total 2910 Support Services Not Listed Elsewhere In the 2000 Series</b>			<b>\$16,224.71</b>
--	--	--	--------------------

LEA : 123466403     Pottstown SD

Printed 3/6/2025 12:48:55 PM

General Fund (10)

<b>3000 Operation of Non-Instructional Services</b>	<b><u>Total</u></b>
<b>100 <u>Personnel Services – Salaries</u></b>	
100 Personnel Services – Salaries	740,281.97
<b>Total Personnel Services – Salaries</b>	<b>\$740,281.97</b>
<b>200 <u>Personnel Services – Employee Benefits</u></b>	
210 Group Insurance – Contracted Provider	39,169.54
220 Social Security Contributions	56,239.55
230 PSERS Retirement Contributions	243,720.60
250 Unemployment Compensation	417.82
291 Other Retirement Plans	2,227.60
<b>Total Personnel Services – Employee Benefits</b>	<b>\$341,775.11</b>
<b>300 <u>Purchased Professional and Technical Services</u></b>	
329 Professional Educational Services – Other	5,590.95
330 Other Professional Services	61,157.50
350 Security / Safety Services	18,773.00
390 Other Purchased Professional and Technical Services	45,126.50
<b>Total Purchased Professional and Technical Services</b>	<b>\$130,647.95</b>
<b>400 <u>Purchased Property Services</u></b>	
430 Repairs and Maintenance Services	1,700.31
440 Rentals	258.21
<b>Total Purchased Property Services</b>	<b>\$1,958.52</b>
<b>500 <u>Other Purchased Services</u></b>	
510 Student Transportation Services	102,448.32
520 Insurance – General	3,250.00
530 Communications	620.83
580 Travel	13,819.52
<b>Total Other Purchased Services</b>	<b>\$120,138.67</b>
<b>600 <u>Supplies</u></b>	
610 General Supplies	239,513.79
<b>Total Supplies</b>	<b>\$239,513.79</b>
<b>800 <u>Other Objects</u></b>	
810 Dues and Fees	34,995.68
860 Grants To Municipal and Community Service Organizations	20,000.00
890 Miscellaneous Expenditures	167.85
<b>Total Other Objects</b>	<b>\$55,163.53</b>
<b>Total 3000 Operation of Non-Instructional Services</b>	<b>\$1,629,479.54</b>

LEA : 123466403     Pottstown SD

Printed 3/6/2025 12:48:55 PM

General Fund (10)				
3200 Student Activities				
	<u>Elementary</u>	<u>Secondary</u>	<u>Federal</u>	<u>Total</u>
100 <u>Personnel Services – Salaries</u>				
100 Personnel Services – Salaries				740,281.97
Total Personnel Services – Salaries				\$740,281.97
200 <u>Personnel Services – Employee Benefits</u>				
210 Group Insurance – Contracted Provider				39,169.54
220 Social Security Contributions				56,239.55
230 PSERS Retirement Contributions				243,720.60
250 Unemployment Compensation				417.82
291 Other Retirement Plans				2,227.60
Total Personnel Services – Employee Benefits				\$341,775.11
300 <u>Purchased Professional and Technical Services</u>				
330 Other Professional Services				3,862.50
350 Security / Safety Services				18,773.00
390 Other Purchased Professional and Technical Services				45,126.50
Total Purchased Professional and Technical Services				\$67,762.00
400 <u>Purchased Property Services</u>				
430 Repairs and Maintenance Services				1,700.31
440 Rentals				258.21
Total Purchased Property Services				\$1,958.52
500 <u>Other Purchased Services</u>				
510 Student Transportation Services				102,448.32
520 Insurance – General				3,250.00
530 Communications				620.83
580 Travel			1,187.88	13,819.52
Total Other Purchased Services			\$1,187.88	\$120,138.67
600 <u>Supplies</u>				
610 General Supplies			5,138.43	230,604.23
Total Supplies			\$5,138.43	\$230,604.23
800 <u>Other Objects</u>				
810 Dues and Fees				34,995.68
Total Other Objects				\$34,995.68
Total 3200 Student Activities			\$6,326.31	\$1,537,516.18



<u>Elementary</u>	<u>Secondary</u>	<u>Federal</u>	<u>Total</u>
-------------------	------------------	----------------	--------------

[illegible][illegible][illegible][illegible][illegible][illegible][illegible][illegible]

<u>Elementary</u>	<u>Secondary</u>	<u>Federal</u>	<u>Total</u>
100%	100%	100%	100%

[illegible][illegible][illegible][illegible]

LEA : 123466403     Pottstown SD

Printed 3/6/2025 12:49:00 PM

General Fund (10)

4000 Facilities Acquisition, Construction and Improvement Services		<u>Total</u>
400 <u>Purchased Property Services</u>		
450 Construction Services		148,942.07
Total Purchased Property Services		\$148,942.07
700 <u>Property</u>		
752 Capital Equipment – Original and Additional		697,206.30
Total Property		\$697,206.30
Total 4000 Facilities Acquisition, Construction and Improvement Services		\$846,148.37

LEA : 123466403     Pottstown SD

Printed 3/6/2025 12:49:00 PM

General Fund (10)

4100 Site Acquisition Services – Original and Additional	<u>Elementary</u>	<u>Secondary</u>	<u>Federal</u>	<u>Total</u>
400 <u>Purchased Property Services</u>				
450 Construction Services				148,942.07
Total Purchased Property Services				\$148,942.07
700 <u>Property</u>				
752 Capital Equipment – Original and Additional				697,206.30
Total Property				\$697,206.30
Total 4100 Site Acquisition Services – Original and Additional				\$846,148.37

LEA : 123466403     Pottstown SD

Printed 3/6/2025 12:49:02 PM

General Fund (10)

5000 Other Expenditures and Financing Uses		<u>Total</u>
800 <u>Other Objects</u>		
830 Interest		998,853.30
880 Refunds of Prior Years' Receipts		7,249.94
Total Other Objects		\$1,006,103.24
900 <u>Other Uses of Funds</u>		
910 Redemption of Principal		2,724,320.80
Total Other Uses of Funds		\$2,724,320.80
Total 5000 Other Expenditures and Financing Uses		\$3,730,424.04

LEA : 123466403     Pottstown SD

Printed 3/6/2025 12:49:02 PM

General Fund (10)

5100 Debt Service / Other Expenditures and Financing Uses	<u>Elementary</u>	<u>Secondary</u>	<u>Federal</u>	<u>Total</u>
800 <u>Other Objects</u>				
830 Interest				998,853.30
880 Refunds of Prior Years' Receipts				7,249.94
Total Other Objects				\$1,006,103.24
900 <u>Other Uses of Funds</u>				
910 Redemption of Principal				2,724,320.80
Total Other Uses of Funds				\$2,724,320.80
Total 5100 Debt Service / Other Expenditures and Financing Uses				\$3,730,424.04

LEA : 123466403     Pottstown SD

Printed 3/6/2025 12:49:02 PM

General Fund (10)				
5110 Debt Service	<u>Elementary</u>	<u>Secondary</u>	<u>Federal</u>	<u>Total</u>
800 <u>Other Objects</u>				
830 Interest				988,138.76
Total Other Objects				\$988,138.76
900 <u>Other Uses of Funds</u>				
910 Redemption of Principal				2,685,000.00
Total Other Uses of Funds				\$2,685,000.00
Total 5110 Debt Service				\$3,673,138.76

LEA : 123466403     Pottstown SD

Printed 3/6/2025 12:49:02 PM

General Fund (10)

5130 Refund of Prior Year Revenues / Receipts	<u>Elementary</u>	<u>Secondary</u>	<u>Federal</u>	<u>Total</u>
800 <u>Other Objects</u>				
880 Refunds of Prior Years' Receipts				7,249.94
Total Other Objects				\$7,249.94
Total 5130 Refund of Prior Year Revenues / Receipts				\$7,249.94

LEA : 123466403     Pottstown SD

Printed 3/6/2025 12:49:02 PM

General Fund (10)

5140 Leases and Other Right-to-Use Arrangements	<u>Elementary</u>	<u>Secondary</u>	<u>Federal</u>	<u>Total</u>
800 <u>Other Objects</u>				
830 Interest				10,714.54
Total Other Objects				\$10,714.54
900 <u>Other Uses of Funds</u>				
910 Redemption of Principal				39,320.80
Total Other Uses of Funds				\$39,320.80
Total 5140 Leases and Other Right-to-Use Arrangements				\$50,035.34



LEA : 123466403     Pottstown SD

Printed 3/6/2025 12:48:57 PM

Athletic / School-Sponsored Extra Curricular Activities Fund (29)

3000 Operation of Non-Instructional Services	<u>Total</u>
300 <u>Purchased Professional and Technical Services</u>	
390 Other Purchased Professional and Technical Services	51,185.00
<b>Total Purchased Professional and Technical Services</b>	<b>\$51,185.00</b>
<b>Total 3000 Operation of Non-Instructional Services</b>	<b>\$51,185.00</b>

LEA : 123466403     Pottstown SD

Printed 3/6/2025 12:48:57 PM

Athletic / School-Sponsored Extra Curricular Activities Fund (29)

3200 Student Activities	<u>Elementary</u>	<u>Secondary</u>	<u>Federal</u>	<u>Total</u>
300 <u>Purchased Professional and Technical Services</u>				
390 Other Purchased Professional and Technical Services				51,185.00
<b>Total Purchased Professional and Technical Services</b>				<b>\$51,185.00</b>
<b>Total 3200 Student Activities</b>				<b>\$51,185.00</b>

LEA : 123466403     Pottstown SD

Printed 3/6/2025 12:49:05 PM

	<u>General Fund(10)</u>	<u>Student Sponsored Activity Fund(21)</u>	<u>Public Purpose Trust(27)</u>	<u>Other Compt Approved (28)</u>	<u>Athletic / Activity(29)</u>
<b>1000 <u>Instruction</u></b>					
1100 Regular Programs - Elementary / Secondary	28,841,507.66				
1200 Special Programs - Elementary / Secondary	18,850,780.61				
1300 Vocational Education	1,827,058.25				
1400 Other Instructional Programs - Elementary / Secondary	1,655,320.85				
1500 Nonpublic School Programs	13,092.52				
1800 Pre-Kindergarten	2,894,375.54				
<b>Total Instruction</b>	<b>\$54,082,135.43</b>				
<b>2000 <u>Support Services</u></b>					
2100 Support Services - Students	5,467,540.54				
2200 Support Services - Instructional Staff	3,240,358.47				
2300 Support Services - Administration	4,849,767.87				
2400 Support Services - Pupil Health	1,587,634.26				
2500 Support Services - Business	1,174,700.71				
2600 Operation and Maintenance of Plant Services	7,833,779.51				
2700 Student Transportation Services	3,607,864.24				
2800 Support Services - Central	744,848.41				
2900 Other Support Services	16,224.71				
<b>Total Support Services</b>	<b>\$28,522,718.72</b>				
<b>3000 <u>Operation of Non-Instructional Services</u></b>					
3200 Student Activities	1,537,516.18				51,185.00
3300 Community Services	91,963.36				
<b>Total Operation of Non-Instructional Services</b>	<b>\$1,629,479.54</b>				<b>\$51,185.00</b>
<b>4000 <u>Facilities Acquisition, Construction and Improvement Services</u></b>					
4100 Site Acquisition Services - Original and Additional	846,148.37				
<b>Total Facilities Acquisition, Construction and Improvement Services</b>	<b>\$846,148.37</b>				
<b>5000 <u>Other Expenditures and Financing Uses</u></b>					
5100 Debt Service / Other Expenditures and Financing Uses	3,730,424.04				
<b>Total Other Expenditures and Financing Uses</b>	<b>\$3,730,424.04</b>				
<b>TOTAL ACTUAL EXPENDITURES &amp; OTHER FINANCING USES</b>	<b>\$88,810,906.10</b>				<b>\$51,185.00</b>

LEA : 123466403     Pottstown SD

Printed 3/6/2025 12:49:05 PM

	<u>Capital Reserve (690.</u>	<u>Capital Reserve (1431)(32)</u>	<u>Other Capital Projects</u>	<u>Debt Service(40)</u>	<u>Permanent(90)</u>
	<u>1850)(31)</u>		<u>Fund(39)</u>		
<b>1000 <u>Instruction</u></b>					
1100 Regular Programs - Elementary / Secondary					
1200 Special Programs - Elementary / Secondary					
1300 Vocational Education					
1400 Other Instructional Programs - Elementary / Secondary					
1500 Nonpublic School Programs					
1800 Pre-Kindergarten					
<b>Total Instruction</b>					
<b>2000 <u>Support Services</u></b>					
2100 Support Services - Students					
2200 Support Services - Instructional Staff					
2300 Support Services - Administration					
2400 Support Services - Pupil Health					
2500 Support Services - Business					
2600 Operation and Maintenance of Plant Services					
2700 Student Transportation Services					
2800 Support Services - Central					
2900 Other Support Services					
<b>Total Support Services</b>					
<b>3000 <u>Operation of Non-Instructional Services</u></b>					
3200 Student Activities					
3300 Community Services					
<b>Total Operation of Non-Instructional Services</b>					
<b>4000 <u>Facilities Acquisition, Construction and Improvement Services</u></b>					
4100 Site Acquisition Services - Original and Additional					
<b>Total Facilities Acquisition, Construction and Improvement Services</b>					
<b>5000 <u>Other Expenditures and Financing Uses</u></b>					
5100 Debt Service / Other Expenditures and Financing Uses					
<b>Total Other Expenditures and Financing Uses</b>					
<b>TOTAL ACTUAL EXPENDITURES &amp; OTHER FINANCING USES</b>					

LEA : 123466403     Pottstown SD

Printed 3/6/2025 12:49:05 PM

	<u>Total</u>
<b>1000 <u>Instruction</u></b>	
1100 Regular Programs - Elementary / Secondary	28,841,507.66
1200 Special Programs - Elementary / Secondary	18,850,780.61
1300 Vocational Education	1,827,058.25
1400 Other Instructional Programs - Elementary / Secondary	1,655,320.85
1500 Nonpublic School Programs	13,092.52
1800 Pre-Kindergarten	2,894,375.54
<b>Total Instruction</b>	<b>\$54,082,135.43</b>
<b>2000 <u>Support Services</u></b>	
2100 Support Services - Students	5,467,540.54
2200 Support Services - Instructional Staff	3,240,358.47
2300 Support Services - Administration	4,849,767.87
2400 Support Services - Pupil Health	1,587,634.26
2500 Support Services - Business	1,174,700.71
2600 Operation and Maintenance of Plant Services	7,833,779.51
2700 Student Transportation Services	3,607,864.24
2800 Support Services - Central	744,848.41
2900 Other Support Services	16,224.71
<b>Total Support Services</b>	<b>\$28,522,718.72</b>
<b>3000 <u>Operation of Non-Instructional Services</u></b>	
3200 Student Activities	1,588,701.18
3300 Community Services	91,963.36
<b>Total Operation of Non-Instructional Services</b>	<b>\$1,680,664.54</b>
<b>4000 <u>Facilities Acquisition, Construction and Improvement Services</u></b>	
4100 Site Acquisition Services - Original and Additional	846,148.37
<b>Total Facilities Acquisition, Construction and Improvement Services</b>	<b>\$846,148.37</b>
<b>5000 <u>Other Expenditures and Financing Uses</u></b>	
5100 Debt Service / Other Expenditures and Financing Uses	3,730,424.04
<b>Total Other Expenditures and Financing Uses</b>	<b>\$3,730,424.04</b>
<b>TOTAL ACTUAL EXPENDITURES &amp; OTHER FINANCING USES</b>	<b>\$88,862,091.10</b>

LEA : 123466403     Pottstown SD

Printed 3/6/2025 12:49:15 PM

PSERS Salary Data (Salary Data should relate to the General Fund only)

Amount	Description	Amount
	Total Salary Base for salaries subject to PSERS withholding	31,013,943.43
	Total Federally Funded salaries subject to PSERS withholding	6,123,533.14

Title I Expenditure Data

Amount	Description	Amount
	Expenditures Funded with Current Title I Funds	1,722,027.00
Total	Title I Expenditure Data	\$1,722,027.00

Title IV Revenue Data

Amount	Description	Amount
	Revenue from Title IV-A-1: Student Support and Academic Enrichment Grants	207,418.00
	Revenue from Title IV-B: 21st Century Community Learning Centers	388,685.00

LEA : 123466403     Pottstown SD

1 .	<u>Current Special Education Expenditures within Function 1000</u> See list of exclusions in the note below.	13,405,933.42
2 .	<u>Current Special Education Expenditures within Function 2000</u> See list of exclusions in the note below.	161,506.04
2A.	<u>Current Special Education Expenditures within Sub-Function 2100</u> This data should also be included in line 2 above. See list of exclusions in the note below.	
2B.	<u>Current Special Education Expenditures within Sub-Function 2200</u> This data should also be included in line 2 above. See list of exclusions in the note below.	
2C.	<u>Current Special Education Expenditures within Sub-Function 2700</u> This data should also be included in line 2 above. See list of exclusions in the note below.	161,506.04
3.	<u>Current Special Education Expenditures within Sub-Function 3100</u> See list of exclusions in the note below.	
4.	<u>Current Special Education Expenditures within Sub-Function 3200</u> See list of exclusions in the note below.	

**Note:** The Current Special Education Expenditure amounts for each line should be calculated as follows:

- \* Include the total expenditures for special education costs from all governmental funds and the food service fund 51 for the function/sub-function requested
- \* Exclude data from sub-functions: 1243,1450,1500,1600,1807,2280,2450,2750,2990
- \* Exclude data from objects: 322,511,512,516,561,562,564,566,592,593,594,595,596,597,700,830,899

Benefits for Staff Relative to Collective Bargaining Agreements

	OBJECT	COVERED	NOT COVERED	TOTAL
10 General Fund				
	211 Medical Insurance			
	212 Dental Insurance	133,603.98	202,073.18	335,677.16
	215 Eye Care Insurance	5,339.48	28,486.98	33,826.46
	216 Prescription Insurance			
	271 Self-Insurance Medical Benefits	2,959,054.45	1,476,873.26	4,435,927.71
	272 Self-Insurance Dental Benefits			
	275 Self-Insurance Eye Care Benefits			
	276 Self-Insurance Prescription Benefits	648,626.20	565,261.82	1,213,888.02
	FUND TOTAL	\$3,746,624.11	\$2,272,695.24	\$6,019,319.35
50 Enterprise Fund				
	211 Medical Insurance			
	212 Dental Insurance		15,696.41	15,696.41
	215 Eye Care Insurance		1,138.79	1,138.79
	216 Prescription Insurance			
	271 Self-Insurance Medical Benefits		151,704.14	151,704.14
	272 Self-Insurance Dental Benefits			
	275 Self-Insurance Eye Care Benefits			
	276 Self-Insurance Prescription Benefits		39,577.26	39,577.26
	FUND TOTAL		\$208,116.60	\$208,116.60
60 Internal Service Fund	No Self Insurance data to report			
	211 Medical Insurance			
	212 Dental Insurance			
	215 Eye Care Insurance			
	216 Prescription Insurance			
	271 Self-Insurance Medical Benefits			
	272 Self-Insurance Dental Benefits			
	275 Self-Insurance Eye Care Benefits			
	276 Self-Insurance Prescription Benefits			
	FUND TOTAL			
Total of All Funds		\$3,746,624.11	\$2,480,811.84	\$6,227,435.95



LEA : 123466403     Pottstown SD

Printed 3/6/2025 12:49:21 PM

Function	Special Education (Prior Year)	Nonspecial Education (Prior Year)	Total (Prior Year)	Special Education (Current Year)	Nonspecial Education (Current Year)	Total (Current Year)
2120 Guidance Services		1,592,742.75	1,592,742.75		2,425,614.53	2,425,614.53
2140 Psychological Services	847,140.31	211,785.08	1,058,925.39	791,990.20	197,997.55	989,987.75
2150 Speech Pathology and Audiology Services	783,415.77		783,415.77	821,282.77		821,282.77
2160 Social Work Services	251,586.68	167,724.43	419,311.11	238,175.47	158,783.63	396,959.10
2260 Instruction and Curriculum Development Services		486,287.81	486,287.81		493,900.07	493,900.07
2350 Legal and Accounting Services		4,082.00	4,082.00		5,667.01	5,667.01
2420 Medical Services	694,695.82	6,848.97	701,544.79	676,508.21	6,669.66	683,177.87
2440 Nursing Services		800,346.58	800,346.58		855,613.67	855,613.67
2700 Student Transportation Services	1,802,026.02	711,695.74	2,513,721.76	2,453,183.41	968,865.14	3,422,048.55
Total	\$4,378,864.60	\$3,981,513.36	\$8,360,377.96	\$4,981,140.06	\$5,113,111.26	\$10,094,251.32

LEA : 123466403     Pottstown SD

Printed 3/6/2025 12:49:23 PM

(PRINCIPAL AMOUNTS ONLY)								
<u>GOVERNMENTAL FUNDS/ ACTIVITIES</u>	Short-Term Borrowing	General Obligation Bonds/Notes	Authority Building Obligations	Leases, Other Right to Use Arrangements	Extended Term Financing Agreements	Other Long Term Debt/Liabilities	OPEB, Comp Abs, Net Pension Liab	Total
1. Debt at Beginning of Fiscal Year		37,445,000.00		14,454.00			86,081,691.00	123,541,145.00
2. Additional Debt Incurred During Year				248,611.00			15,543,188.00	15,791,799.00
3. Retirements and Repayments		2,685,000.00		39,321.00			11,097,076.00	13,821,397.00
4. Debt at End of Fiscal Year		34,760,000.00		223,744.00			90,527,803.00	125,511,547.00
5. Accreted Interest at End Of Fiscal Year								
6. Total Debt and Accreted Interest		34,760,000.00		223,744.00			90,527,803.00	125,511,547.00
7. Current Portion P&I - Due within 1 year		3,674,403.76		223,744.00				3,898,147.76
8. Interest Paid during current fiscal year		988,138.76		10,714.54				998,853.30

(PRINCIPAL AMOUNTS ONLY)								
<u>PROPRIETARY FUNDS</u>	Short-Term Borrowing	General Obligation Bonds/Notes	Authority Building Obligations	Leases, Other Right to Use Arrangements	Extended Term Financing Agreements	Other Long Term Debt/Liabilities	OPEB, Comp Abs, Net Pension Liab	Total
1. Debt at Beginning of Fiscal Year							1,827,295.00	1,827,295.00
2. Additional Debt Incurred During Year							246,183.00	246,183.00
3. Retirements and Repayments							227,534.00	227,534.00
4. Debt at End of Fiscal Year							1,845,944.00	1,845,944.00
5. Accreted Interest at End Of Fiscal Year								
6. Total Debt and Accreted Interest							1,845,944.00	1,845,944.00
7. Current Portion P&I - Due within 1 year								
8. Interest Paid during current fiscal year								

LEA : 123466403     Pottstown SD

Total Principal and Interest Payments Made by Your School - All Funds

Function	Fund		Principal (910)	Principal (920)	Interest (830)	Total (Principal +Interest)	Misc Other Uses (990)
5110	10	General Fund	2,685,000.00		988,138.76	3,673,138.76	
5110	20	Special Revenue Funds					
5110	30	Capital Projects Funds					
5110	40	Debt Service Fund					
5110	90	Permanent Fund					
5120	10	General Fund					
5120	20	Special Revenue Funds					
5120	30	Capital Projects Funds					
5120	40	Debt Service Fund					
5140	10	General Fund	39,320.80		10,714.54	50,035.34	
5140	20	Special Revenue Funds					
5140	30	Capital Projects Funds					
5140	40	Debt Service Fund					
5140	90	Permanent Fund					
Total Debt Payments - Governmental Funds			\$2,724,320.80		\$998,853.30	\$3,723,174.10	

Function	Fund		Principal (910)	Principal (920)	Interest (830)	Total (Principal +Interest)
5110	50	Enterprise Fund				
5110	60	Internal Service Fund				
5120	50	Enterprise Fund				
5120	60	Internal Service Fund				
5140	50	Enterprise Fund				
5140	60	Internal Service Fund				

Total Debt Payments - Proprietary Funds		
---	--	--

LEA : 123466403     Pottstown SD

Debt Category	Debt Issue Date (MM/YYYY)	Principal Amounts Only				Current Portion Due Within One Year (Principal and Interest)	Interest Paid During Fiscal Year
		Debt at Beginning of Fiscal Year	Additions	Reductions / Repayments	Debt at End of Fiscal Year		
General Obligation Bonds/Notes – CIB	10/2021	9,510,000.00		50,000.00	9,460,000.00	243,225.00	183,475.00
General Obligation Bonds/Notes – CIB	06/2020	5,755,000.00		1,595,000.00	4,160,000.00	1,781,400.00	210,200.00
General Obligation Bonds/Notes – CIB	11/2019	9,635,000.00		10,000.00	9,625,000.00	233,680.00	223,840.00
General Obligation Bonds/Notes – CIB	03/2019	6,955,000.00		25,000.00	6,930,000.00	246,111.26	221,623.76
General Obligation Bonds/Notes – CIB	12/2018	5,590,000.00		1,005,000.00	4,585,000.00	1,169,987.50	149,000.00
Leases and Other Right to Use Arrangements		14,454.00	248,611.00	39,321.00	223,744.00	223,744.00	10,714.54
Compensated Absences		537,573.00	841,367.00	491,807.00	887,133.00		
Net Pension Liability		79,648,042.00	14,112,439.00	10,124,916.00	83,635,565.00		
Other Post-Employment Benefits (OPEB)		5,896,076.00	589,382.00	480,353.00	6,005,105.00		
Totals for Debt Entered:		\$123,541,145.00	\$15,791,799.00	\$13,821,397.00	\$125,511,547.00	\$3,898,147.76	\$998,853.30

Debt Category	Debt Issue Date (MM/YYYY)	Principal Amounts Only				Current Portion Due Within One Year (Principal and Interest)	Interest Paid During Fiscal Year
		Debt at Beginning of Fiscal Year	Additions	Reductions / Repayments	Debt at End of Fiscal Year		
Compensated Absences		21,915.00	9,174.00	5,770.00	25,319.00		
Net Pension Liability		1,666,958.00	226,500.00	204,023.00	1,689,435.00		
Other Post-Employment Benefits (OPEB)		138,422.00	10,509.00	17,741.00	131,190.00		
Totals for Debt Entered:		\$1,827,295.00	\$246,183.00	\$227,534.00	\$1,845,944.00		

LEA : 123466403     Pottstown SD

Printed 3/6/2025 12:49:24 PM

General Fund (10)

Section 1: Tuition/Purchased Services as Reported within Expenditure Detail	Amount
Tuition Reported in General Fund Expenditures 1000-560	8,569,122.70
Purchased Services in General Fund Expenditures 1000-594 and 1000-597	7,732.88
<b>Section 1 Total</b>	<b>\$8,576,855.58</b>

Section 2: Tuition Paid to Institution Types During Fiscal Year	Tuition Paid For Nonspecial Education	Tuition Paid For Special Education	Total
1 1306 Institutions			
2 Institutionalized Children's Programs			
3 Juveniles Incarcerated in Adult Facilities			
4 Residential Treatment Facilities			
5 Other Local Education Agencies	137,096.87	17,312.27	154,409.14
6 Brick and Mortar Charter Schools	798,241.43	887,475.87	1,685,717.30
7 Cyber Charter Schools	1,863,941.07	2,268,640.18	4,132,581.25
8 Career and Technology Centers			
9 Approved Private Schools		350,945.95	350,945.95
10 PA Chartered Schools for the Deaf and Blind			
11 Private Residential Rehabilitative Institutions		128,991.85	128,991.85
12 Juvenile Detention Centers			
13 Special Program Jointures			
14 Other Tuition Not Included Elsewhere In This Section	68,309.75	2,055,900.34	2,124,210.09
<b>Section 2 Total</b>	<b>\$2,867,589.12</b>	<b>\$5,709,266.46</b>	<b>\$8,576,855.58</b>

LEA : 123466403     Pottstown SD

Printed 3/6/2025 12:49:29 PM

Food Service / Cafeteria Operations Fund (51)

3000 Operation of Non-Instructional Services		Total
100	<u>Personnel Services – Salaries</u>	
100	Personnel Services – Salaries	705,677.92
Total Personnel Services – Salaries		\$705,677.92
200	<u>Personnel Services – Employee Benefits</u>	
210	Group Insurance – Contracted Provider	216,037.83
220	Social Security Contributions	51,265.78
230	PSERS Retirement Contributions	160,936.63
280	Other Post-Employment Benefits (OPEB)	(6,363.00)
Total Personnel Services – Employee Benefits		\$421,877.24
300	<u>Purchased Professional and Technical Services</u>	
390	Other Purchased Professional and Technical Services	1,494.09
Total Purchased Professional and Technical Services		\$1,494.09
400	<u>Purchased Property Services</u>	
410	Cleaning Services	4,171.19
430	Repairs and Maintenance Services	1,203.43
490	Other Purchased Property Services	1,758.84
Total Purchased Property Services		\$7,133.46
500	<u>Other Purchased Services</u>	
510	Student Transportation Services	2,660.01
530	Communications	1,633.71
580	Travel	247.59
Total Other Purchased Services		\$4,541.31
600	<u>Supplies</u>	
610	General Supplies	99,180.40
630	Food	1,390,014.12
640	Books and Periodicals	7,925.00
650	Supplies & Fees – Technology Related	1,260.00
Total Supplies		\$1,498,379.52
700	<u>Property</u>	
740	Depreciation	43,965.35
Total Property		\$43,965.35
800	<u>Other Objects</u>	
810	Dues and Fees	1,076.00
Total Other Objects		\$1,076.00
Total 3000 Operation of Non-Instructional Services		\$2,684,144.89

LEA : 123466403     Pottstown SD

Printed 3/6/2025 12:49:29 PM

Food Service / Cafeteria Operations Fund (51)

3100 Food Services	Elementary	Secondary	Federal	Total
100 <u>Personnel Services – Salaries</u>				
100 Personnel Services – Salaries				705,677.92
Total Personnel Services – Salaries				\$705,677.92
200 <u>Personnel Services – Employee Benefits</u>				
210 Group Insurance – Contracted Provider				216,037.83
220 Social Security Contributions				51,265.78
230 PSERS Retirement Contributions				160,936.63
280 Other Post-Employment Benefits (OPEB)				(6,363.00)
Total Personnel Services – Employee Benefits				\$421,877.24
300 <u>Purchased Professional and Technical Services</u>				
390 Other Purchased Professional and Technical Services				1,494.09
Total Purchased Professional and Technical Services				\$1,494.09
400 <u>Purchased Property Services</u>				
410 Cleaning Services				4,171.19
430 Repairs and Maintenance Services				1,203.43
490 Other Purchased Property Services				1,758.84
Total Purchased Property Services				\$7,133.46
500 <u>Other Purchased Services</u>				
510 Student Transportation Services				2,660.01
530 Communications				1,633.71
580 Travel				247.59
Total Other Purchased Services				\$4,541.31
600 <u>Supplies</u>				
610 General Supplies				99,180.40
630 Food				1,390,014.12
640 Books and Periodicals				7,925.00
650 Supplies & Fees – Technology Related				1,260.00
Total Supplies				\$1,498,379.52
700 <u>Property</u>				
740 Depreciation				43,965.35
Total Property				\$43,965.35
800 <u>Other Objects</u>				
810 Dues and Fees				1,076.00
Total Other Objects				\$1,076.00
Total 3100 Food Services				\$2,684,144.89

LEA : 123466403     Pottstown SD

Printed 3/6/2025 12:49:27 PM

Internal Service Fund (60)

2000 Support Services

Total

200	<u>Personnel Services – Employee Benefits</u>	
210	Group Insurance – Contracted Provider	6,612,917.83
Total Personnel Services – Employee Benefits		\$6,612,917.83
800	<u>Other Objects</u>	
810	Dues and Fees	302,877.00
Total Other Objects		\$302,877.00
Total 2000 Support Services		\$6,915,794.83



LEA : 123466403     Pottstown SD

Printed 3/6/2025 12:49:27 PM

Internal Service Fund (60)

2600 Operation and Maintenance of Plant Services	<u>Elementary</u>	<u>Secondary</u>	<u>Federal</u>	<u>Total</u>
200 <u>Personnel Services – Employee Benefits</u>				
210 Group Insurance – Contracted Provider				6,612,917.83
Total Personnel Services – Employee Benefits				\$6,612,917.83
800 <u>Other Objects</u>				
810 Dues and Fees				302,877.00
Total Other Objects				\$302,877.00
Total 2600 Operation and Maintenance of Plant Services				\$6,915,794.83

LEA : 123466403     Pottstown SD

Printed 3/6/2025 12:49:27 PM

Internal Service Fund (60)

2690 Other Operation and Maintenance of Plant Services	<u>Elementary</u>	<u>Secondary</u>	<u>Federal</u>	<u>Total</u>
200 <u>Personnel Services – Employee Benefits</u>				
210 Group Insurance – Contracted Provider				6,612,917.83
Total Personnel Services – Employee Benefits				\$6,612,917.83
800 <u>Other Objects</u>				
810 Dues and Fees				302,877.00
Total Other Objects				\$302,877.00
Total 2690 Other Operation and Maintenance of Plant Services				\$6,915,794.83

LEA : 123466403     Pottstown SD

Printed 3/6/2025 12:49:31 PM

	<u>Food Service(51)</u>	<u>Child Care Operations(52)</u>	<u>Other Enterprise(58)</u>	<u>Internal Service(60)</u>	<u>Total</u>
<b>2000 <u>Support Services</u></b>					
2600 Operation and Maintenance of Plant Services				6,915,794.83	6,915,794.83
<b>Total Support Services</b>				<b>\$6,915,794.83</b>	<b>\$6,915,794.83</b>
<b>3000 <u>Operation of Non-Instructional Services</u></b>					
3100 Food Services	2,684,144.89				2,684,144.89
<b>Total Operation of Non-Instructional Services</b>	<b>\$2,684,144.89</b>				<b>\$2,684,144.89</b>
<b>TOTAL ACTUAL EXPENDITURES &amp; OTHER FINANCING USES</b>	<b>\$2,684,144.89</b>			<b>\$6,915,794.83</b>	<b>\$9,599,939.72</b>

LEA : 123466403 Pottstown SD

Printed 3/6/2025 12:49:37 PM

Fund	School	School Number	Local Personnel	Local Nonpersonnel	State Personnel	State Nonpersonnel	Federal Personnel	Federal Nonpersonnel	Total	Explanation
10										
	Barth El Sch	3345	2,181,981.13	902,481.30	2,492,961.52	1,031,104.77	982,572.51	263,302.92	7,854,404.15	
	Franklin El Sch	3339	2,058,517.50	981,935.41	2,351,901.60	1,121,882.85	1,211,459.76	293,322.79	8,019,019.91	
	Lincoln El Sch	3341	2,029,052.35	856,428.92	2,318,237.02	978,488.91	669,060.81	265,046.06	7,116,314.07	
	Pottstown MS	3346	6,098,777.60	3,361,058.15	6,967,987.80	3,840,083.00	2,108,200.78	931,111.31	23,307,218.64	
	Pottstown SHS	3348	6,585,871.22	4,387,626.33	7,524,503.00	5,012,959.77	1,718,264.98	987,016.29	26,216,241.59	
	Rupert El Sch	3342	1,989,346.26	932,840.81	2,272,871.94	1,065,791.18	859,347.42	296,247.90	7,416,445.51	
Total			20,943,546.06	11,422,370.92	23,928,462.88	13,050,310.48	7,548,906.26	3,036,047.27	79,929,643.87	